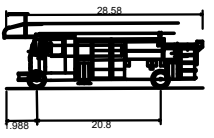
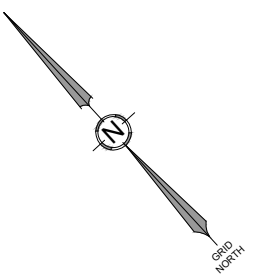
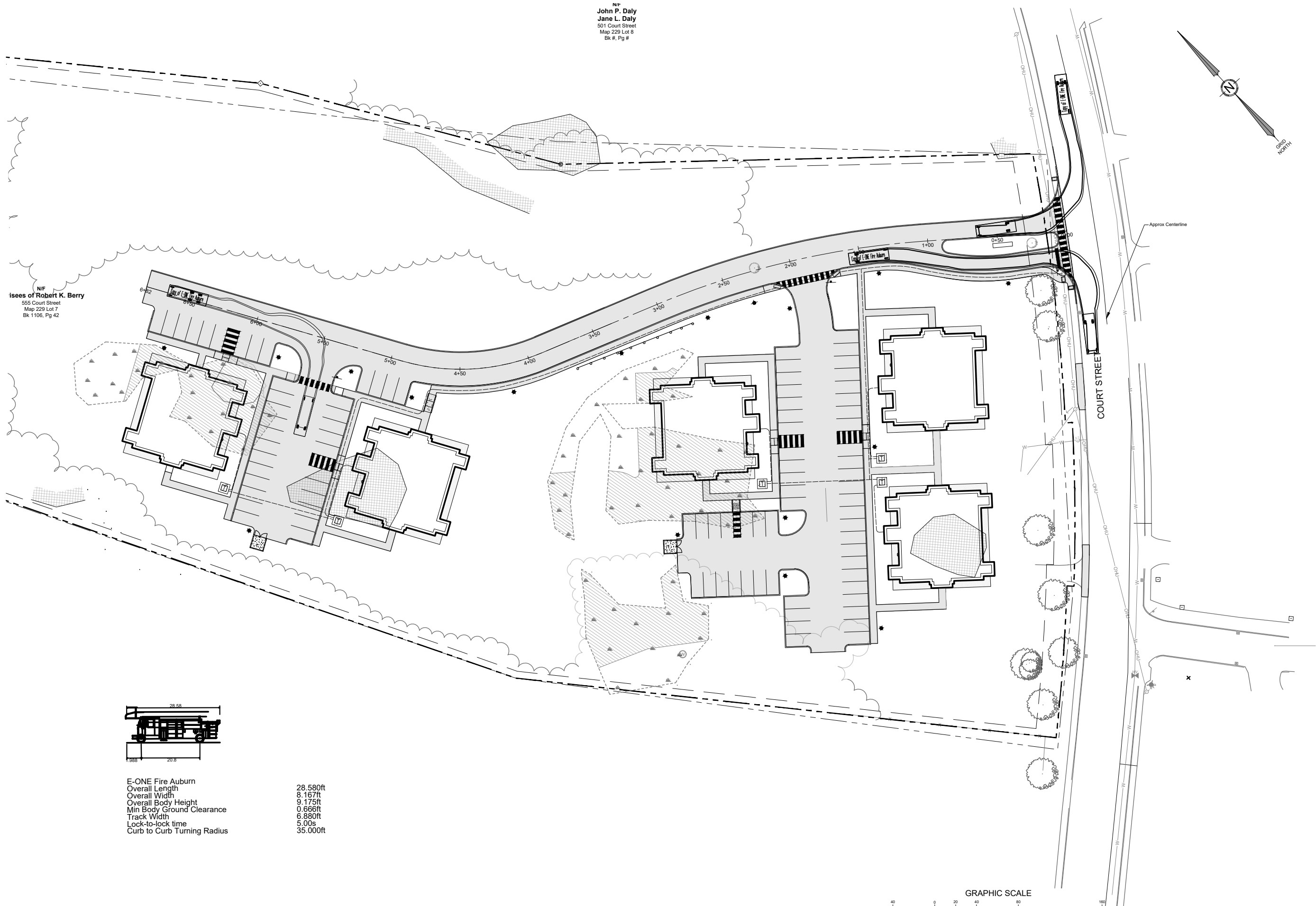
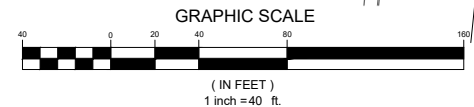


N/P
John P. Daly
Jane L. Daly
 501 Court Street
 Map 229 Lot 8
 Bk #, Pg #

N/F
Issues of Robert K. Berry
 555 Court Street
 Map 229 Lot 7
 Bk 1106, Pg 42



E-ONE Fire Auburn
 Overall Length 28.580ft
 Overall Width 8.167ft
 Overall Body Height 9.175ft
 Min Body Ground Clearance 0.666ft
 Track Width 6.880ft
 Lock-to-lock time 5.00s
 Curb to Curb Turning Radius 35.000ft



DATE: 3/4/2022
 P.E.: CRAIG M. SWEET

NO.	DATE	REVISIONS	APPROVED BY
1	4/5/2022	REVISED PER CITY STAFF COMMENTS	

41 CAMPUS DRIVE
 SUITE 301
 NEW GLOUCESTER, ME 04260

656 CONGRESS STREET
 SUITE 201
 PORTLAND, ME 04102

OFFICE: (207) 926-6111 FAX: (207) 221-1317
 www.terradynconsultants.com



PERMIT DRAWING
 NOT FOR CONSTRUCTION

PROJECT: **STABLE RIDGE APARTMENTS**
 555 COURT STREET, AUBURN, MAINE

SHEET TITLE: **TURNING FIGURES**

CLIENT: **AMERICAN DEVELOPMENT GROUP**
 PO. BOX 1495
 NAPLES, MAINE 04055

DATE: 1/3/2022
 SCALE: 1"=40'
 DESIGNED: CMS
 JOB NO.: 21-81
 SHEET: **FIG 1**

C:\000\Terradyn Consultants\Project Folders - Documents\2021\Job#21-81\555 Court Street\CAD\Permitting\21-81 B.dwg