



# Public Safety Buildings Facilities Assessment Update



# The Challenges

## Engine 2 – 180 South Main St

- Living spaces open directly into the apparatus bays.
- Lacks drive-thru apparatus bay
- Undersized living quarters and no accommodation for gender diversity
- No equipment storage, work-stations or fitness area
- Lacks apparatus bay and living space for EMS

## Engine 3 – 550 Minot Ave

- Cannot support tower truck
- Toilet and shower areas do not accommodate gender diversity
- No dedicated bunk space

## Engine 5 – 651 Center St

- No capacity for staff growth
- Lacks work-stations and private office space



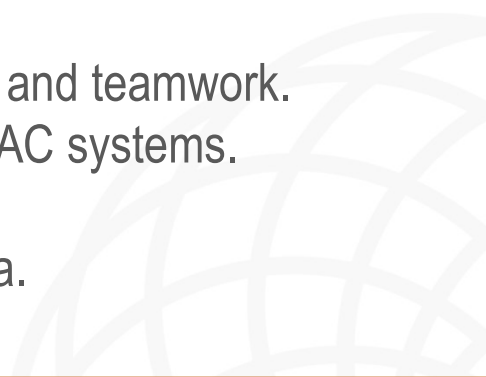
# The Challenges

## 911 Center – 550 Minot Ave

- Lacks windows or access to natural light, located in the basement.
- Insufficient office space and lacks space for growth.
- Lacks training rooms, locker area, and secure records storage.
- No secure, visible and accessible reception area for public interactions

## Police Department - 60 Court Street (City Hall)

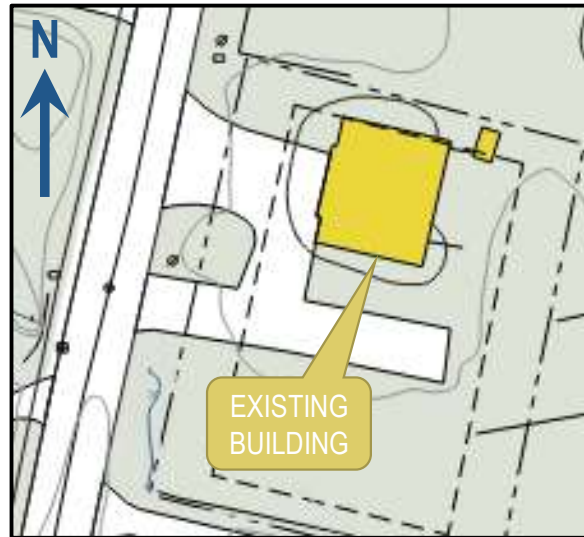
- Short-term solution now going on 13+ years.
- Departments on separate building floors, challenging communications and teamwork.
- Inadequate evidence room/vehicle impound location, capacity and HVAC systems.
- Lacks adequate locker rooms, shower areas and secure spaces.
- No Sally Port, Booking area, Holding area, or Prisoner processing area.



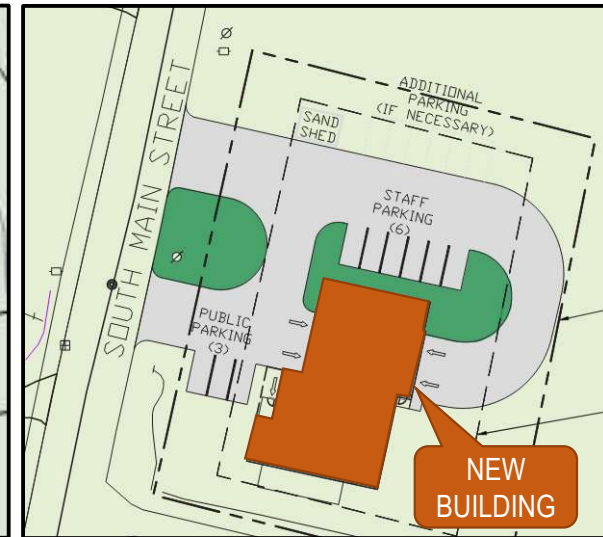
# The Solutions

## Engine 2 – 180 South Main St

- New right-sized, purpose-built facility
- Efficient building performance
- Allows for continued station operations during construction
- Drive-thru apparatus bay



EXISTING SITE PLAN

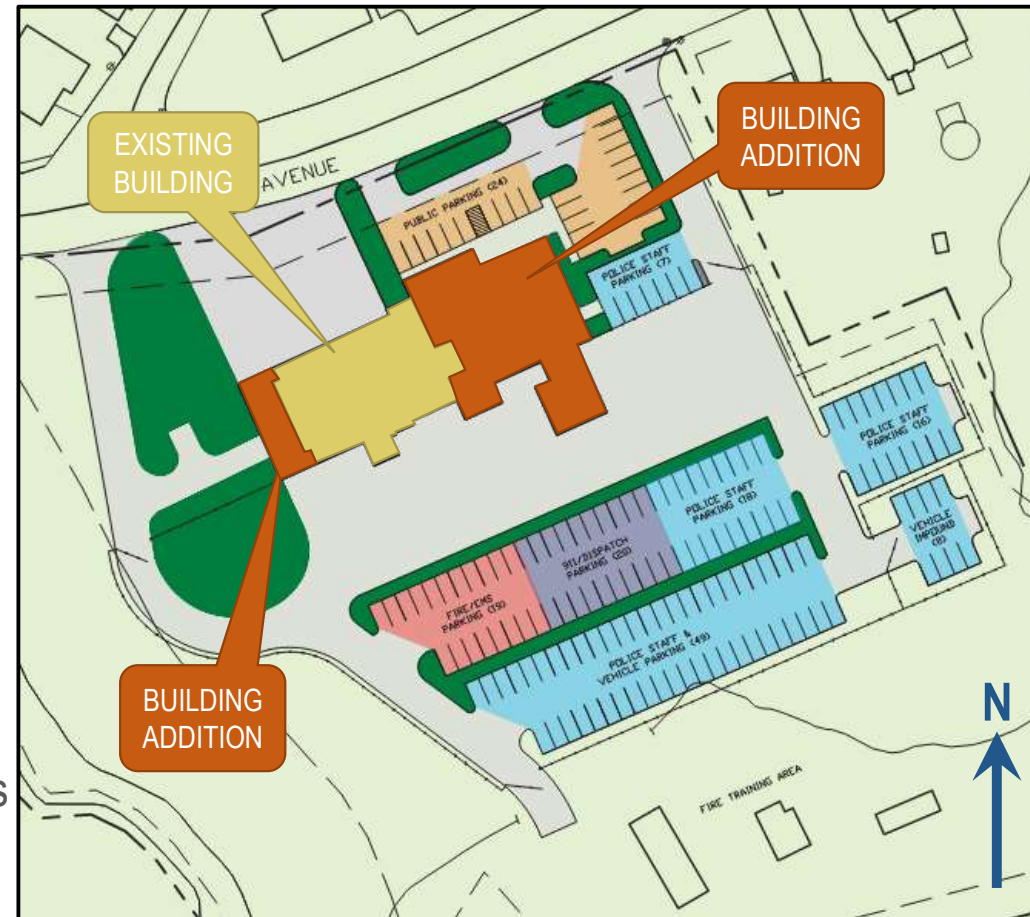


PROPOSED SITE PLAN

# The Solutions

## Public Safety Facility – 550 Minot Ave

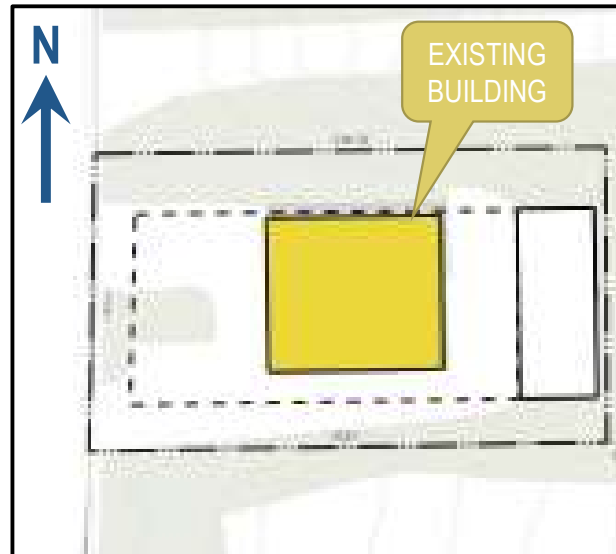
- Building addition for public safety including
  - Police department
  - Fire station administration support
  - 911 Center
  - Common public entry, lobby, and reception
  - Emergency operations center
  - Other shared program rooms and spaces
- Building addition for new tower truck bay
- Renovate existing living and support spaces
- Allows for phased construction



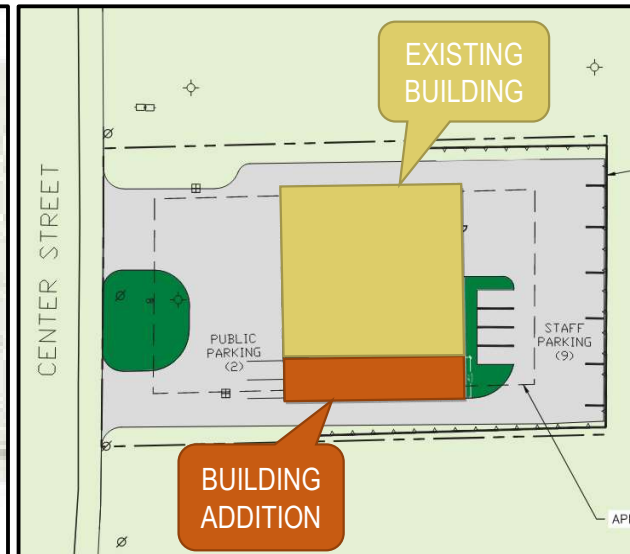


# The Solutions

- Engine 5 – 651 Center St
  - Building addition on south for additional bunk and support space
  - Renovate and modernize existing support spaces
  - No changes to existing apparatus bay



EXISTING SITE PLAN



PROPOSED SITE PLAN

# Implementation Schedule

	Year 1						Year 2						Year 3																							
	21-Jul	21-Aug	21-Sep	21-Oct	21-Nov	21-Dec	22-Jan	22-Feb	22-Mar	22-Apr	22-May	22-Jun	22-Jul	22-Aug	22-Sep	22-Oct	22-Nov	22-Dec	23-Jan	23-Feb	23-Mar	23-Apr	23-May	23-Jun	23-Jul	23-Aug	23-Sep	23-Oct	23-Nov	23-Dec	24-Jan	24-Feb	24-Mar	24-Apr	24-May	24-Jun
DESIGN PHASE	Pre-Design (Survey, Wetlands, Geotech)												Engine 2 New Station Design & Permitting			Engine 2 Bidding			Engine 3 Public Safety Facility Design & Permitting																	
DESIGN BUDGET	\$200K												\$210K						\$1.5M																	
CONSTRUCTION PHASE																			Engine 2 New Station Construction																	
CONSTRUCTION BUDGET																			\$2.6M																	
TOTAL BUDGET (PER FISCAL YEAR)	YR1 = \$200K						YR2 = \$210K						YR3 = \$4.1M																							

	Year 4						Year 5						Year 6																							
	24-Jul	24-Aug	24-Sep	24-Oct	24-Nov	24-Dec	25-Jan	25-Feb	25-Mar	25-Apr	25-May	25-Jun	25-Jul	25-Aug	25-Sep	25-Oct	25-Nov	25-Dec	26-Jan	26-Feb	26-Mar	26-Apr	26-May	26-Jun	26-Jul	26-Aug	26-Sep	26-Oct	26-Nov	26-Dec	27-Jan	27-Feb	27-Mar	27-Apr	27-May	27-Jun
DESIGN PHASE	Engine 3 Bidding								Engine 5 Addition & Renovation Design & Permitting						Engine 5 Bidding																					
DESIGN BUDGET									\$255K																											
CONSTRUCTION PHASE	Relocate FD Staff		Engine 3 (Phase 1) PD & 911 Addition						Relocate Staff		Engine 3 (Phase 2) FD Renovation				Engine 5 Renovation & Addition																					
CONSTRUCTION BUDGET			\$19.3M												\$2.93M																					
TOTAL BUDGET (PER FISCAL YEAR)	YR4 = \$19.3M						YR5 = \$255K						YR6 = \$2.93M																							