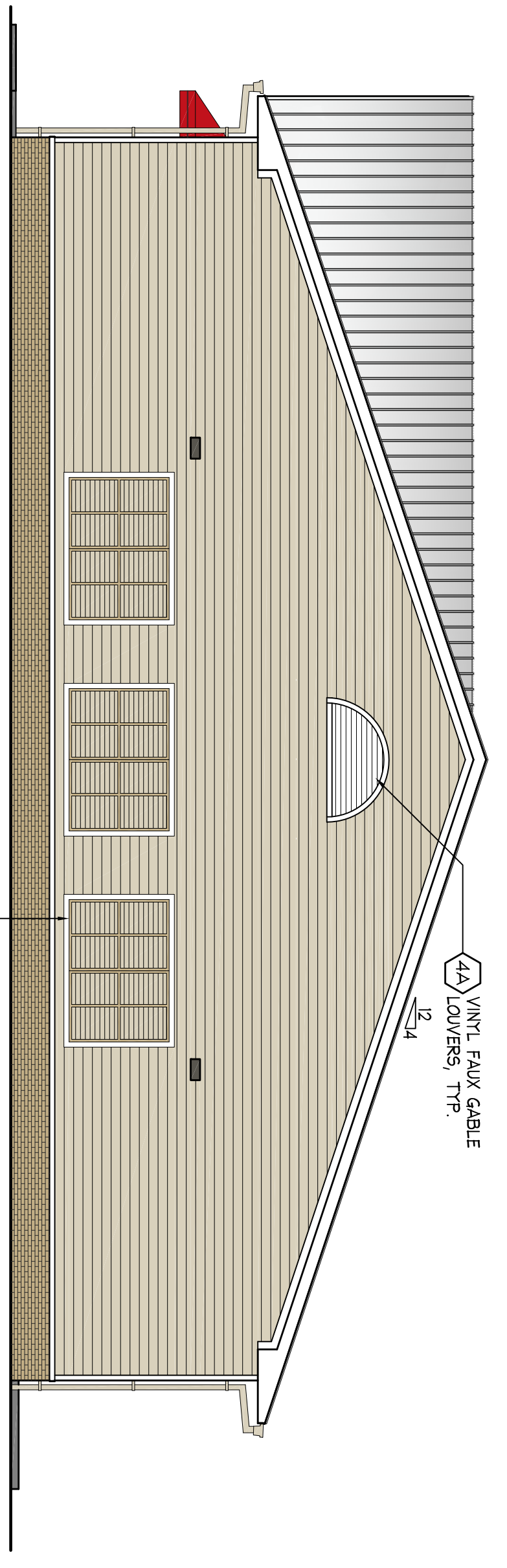


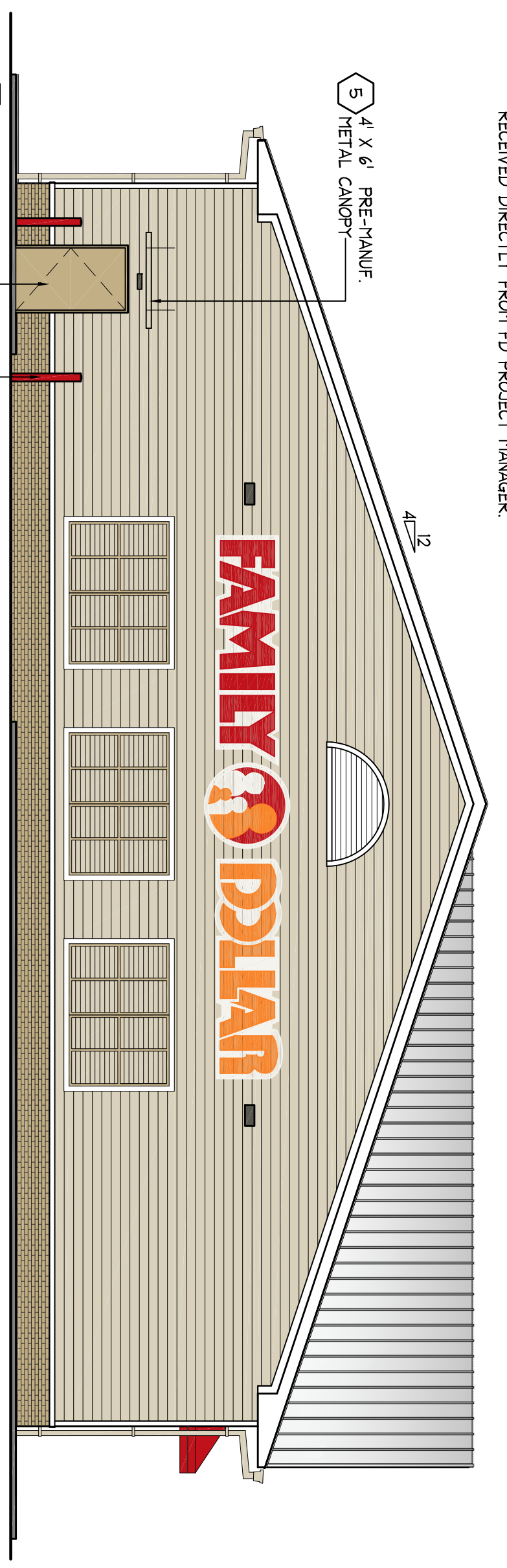
NORTH ELEVATION (MINOT AVENUE)

SCALE = 3/16" = 1'-0"



WEST ELEVATION (ADJ. PROPERTY)

SCALE = 1/8" = 1'-0"



EAST ELEVATION (ADJ. PROPERTY)

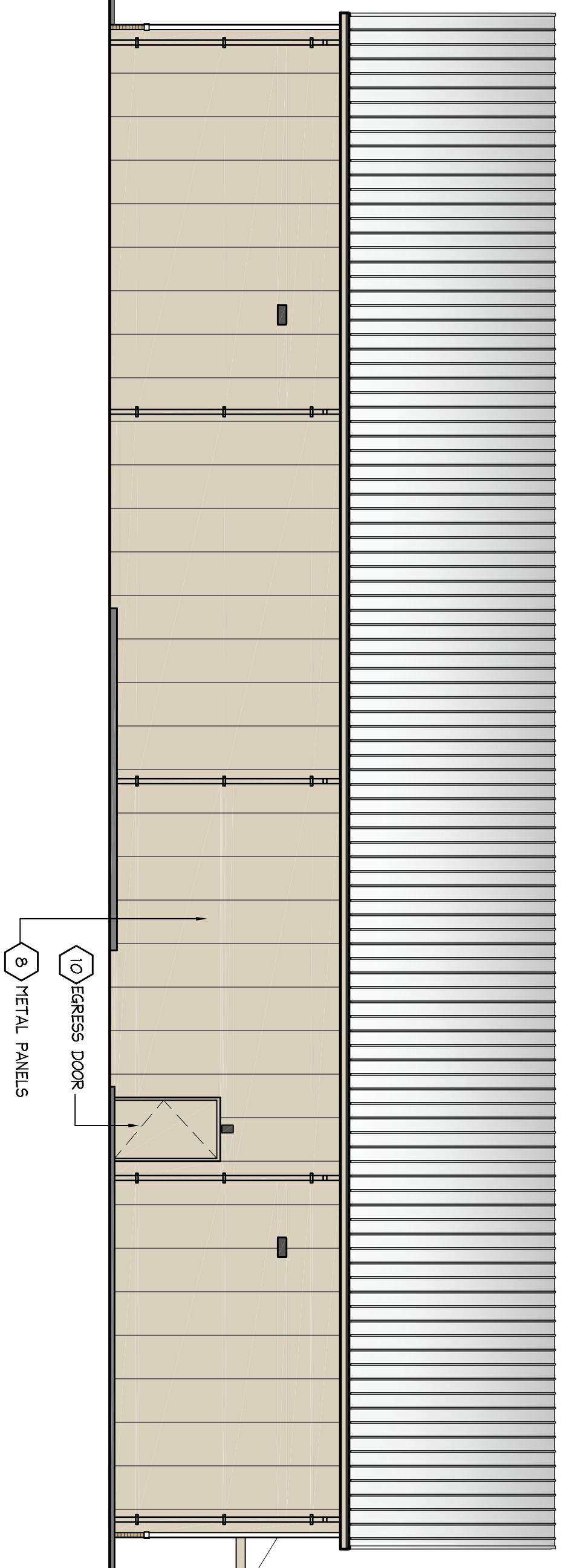
SCALE = 1/8" = 1'-0"

NO.	AREA	TYPE	COATS	COLOR
1	THIN BRICK VENEER OVER 5/8" CDX F.R. PLYWOOD SHEATHING	EXTERIOR LATEX	2	BELDEN FINISH 'SEAL BROWN VELOUR'
2	METAL CANOPY ROOF	VP - PANEL, RIB NICOR - CLASSIC WALL	PRE-FINISHED	MATCH VP COLOR 'COOL BRIGHT RED' OR SHERWIN WILLIAMS SW 4081 'SAFETY RED'
2A	SOFFIT PANELS	VP - PANEL, RIB NICOR - CLASSIC WALL	PRE-FINISHED	VP COLOR 'COOL ARCTIC WHITE'
3	VINT SIDING OVER 5/8" CDX F.R. PLYWOOD SHEATHING	CERTAINTED ENCORE DOUBLE 4" CLARBOARD	PRE-FINISHED	CERTAINTED FINISH 'DESERT TAN'
4	TRIM BOARDS AT WINDOWS CORNERS F.R. PLYWOOD SHEATHING OVER 5/8" CDX	CERTAINTED TRIM AND CORNER PRODUCTS	PRE-FINISHED	CERTAINTED FINISH 'COLONIAL WHITE'
4A	3/4" x 48" HALF ROUND GABLE VINT LOUVERS OVER 5/8" CDX F.R. PLYWOOD SHEATHING	TBD	2	FIELD PAINT SHERWIN WILLIAMS COLOR TO MATCH CERTAINTED FINISH 'COLONIAL WHITE'
5	GUTTERS, DOWNSPOUTS, MTL. TRIM & RECEIVING CANOPY	METAL BUILDING MANUFACTURER	PRE-FINISHED	VP COLOR 'COOL EGYPTIAN WHITE' NICOR COLOR 'LIGHTSTONE' MID-WEST COLOR 'ALPOND' SHERWIN WILLIAMS MATCHING COLOR SW 646 'MOOL SKEIN'
6	STEEL BOLLARDS	EXTERIOR LATEX	2	MATCH SHERWIN WILLIAMS SW 4081 'SAFETY RED'
7	METAL ROOF	TO BE DETERMINED BASED ON ENERGY CODE REQUIREMENTS (EXPANDING SEANT FOR FEE DEVELOPMENT ONLY)	PRE-FINISHED	COOL ARCTIC WHITE
8	METAL WALL PANELS	MID-WEST - PBA PANEL NICOR - ACCENT PANEL VP - VEE RIB PANEL	PRE-FINISHED	VP COLOR 'COOL EGYPTIAN WHITE' NICOR COLOR 'LIGHTSTONE' MID-WEST COLOR 'ALPOND' SHERWIN WILLIAMS MATCHING COLOR SW 646 'MOOL SKEIN'
9	STOREFRONT SYSTEM	KAMNER OR VISTA WALL	PRE-FINISHED	CLEAR ANODIZED ALUM.
10	MAIN DOOR PROVIDED BY PERB (EASSES DOOR ONLY)	EXTERIOR LATEX	2	FIELD PAINT SHERWIN WILLIAMS COLOR SW 646 'MOOL SKEIN'
11	MAIN DOOR PROVIDED BY PERB (RECEIVING DOOR ONLY)	EXTERIOR LATEX	2	FIELD PAINT SHERWIN WILLIAMS COLOR TO MATCH BELDEN FINISH 'SEAL BROWN VELOUR'
12	FAUX SHUTTERS FRAME	TIMBERLANE FUNDAMENTAL LOUVER OR EQUAL	2	FIELD PAINT SHERWIN WILLIAMS COLOR TO MATCH BELDEN FINISH 'SEAL BROWN VELOUR'
13	METAL ACCENT TRIM	METAL BUILDING MANUFACTURER	PRE-FINISHED	FURNISHED BY METAL BUILDING MANUFACTURER. NICOR COLOR 'REGAL RED' (PRE-FINISHED), SINGLE BEAD, EMBOSSED

MATERIALS ARE TO BE APPROVED BY FAMILY DOLLAR STORE. COLORS ARE CRITICAL AND MUST BE APPROVED BY FAMILY DOLLAR STORE REPRESENTATIVE IF THEY DIFFER FROM THE SHERWIN WILLIAMS COLORS SHOWN BELOW.

SOUTH ELEVATION (SWETT AVENUE)

SCALE = 1/8" = 1'-0"



REVIEWED
 DISAPPROVED - RESUBMIT
 All Site and Building Plan Requirements, including but limited to, all Interior Dimensions, Materials, Hardware, Equipment & Specifications, are to be designed and built per the Family Dollar Prototype Plan #_____ as indicated in the lease, unless a deviation is approved by Family Dollar's Plan Reviewer, next to each specific deviation. The initials indicate approval of only the one deviation being initiated by Family Dollar is disapproved and void.
 (Approval to plan deviation will be indicated with the following circled initials: _____)

FVWH Architects
 Lic # AX 0003300
 3336 Grand Blvd, Suite 201
 Holiday, Florida 34690
 Ph. 727.815.3335
 Fax. 727.815.3337

TO THE BEST OF THE KNOWLEDGE OF THE ARCHITECTS AND ENGINEERS, PLANS AND SPECIFICATIONS COMPLY WITH THE CITY AND COUNTY ORDINANCES AND THE APPLICABLE BUILDING, FIRE AND SAFETY STANDARDS.
 GUY F. FABER
 ME License No. ARC3105

no.	date	revision descriptions

FAMILY DOLLAR
 850 MINOT AVENUE
 AUBURN, MAINE
 PROJECT #710288 PROTOTYPE #2013-03

02.06.14
 date
 14012
 comm. no.
 COLOR RENDERING & EXT. FINISH SCHEDULE

R1.0

INTERIOR WALL TYPES

TYPE 1A WALL (OFFICE / RESTROOMS / VESTIBULE)
 3-5/8" STUDS @ 16" O.C. - COVER W/ 1/2" GMB EACH SIDE TO 6" ABOVE CEILING. (PROVIDE 6" STUDS AT PLUMBING AND ELECTRICAL WALLS). FINISH PER SCHEDULE ON SHEET A12

TYPE 1B WALL (SEPARATING SALES SUPPORT FROM OFFICE/BREAK ROOMS)
 3-5/8" STUDS @ 16" O.C. - COVER W/ 1/2" GMB EACH SIDE TO UNDERSIDE OF DECK ABOVE. FINISH PER SCHEDULE ON SHEET A12

NOTE:
 HLD GMB WALL TIGHT TO DUCTWORK WHERE IT PENETRATES WALLS - ANY TYPE. (WHERE APPLICABLE)

DIMENSIONAL SUBMITTAL TO FAMILY DOLLAR.

DEVELOPER / GENERAL CONTRACTOR MUST USE THIS FLOOR PLAN SHEET FOR THE PURPOSES OF DIMENSIONAL AS-BUILT SUBMITTAL TO FAMILY DOLLAR AS REQUIRED FOR MILLSTONE SUBMITTALS.

CERTIFICATE OF OCCUPANCY NOTE

G.C. IS RESPONSIBLE FOR THE CERTIFICATE OF OCCUPANCY. CERTIFICATE TO BE PREPARED AND MOUNTED IN THE MANAGERS OFFICE. THE DOOR IF MULTIFAMILY DOES NOT USE A CAD, IT IS THE MANAGERS RESPONSIBILITY TO OBTAIN THE NECESSARY PERMITS FROM THE CITY/COUNTY LETTERHEAD AND THAT LETTER IS TO BE PREPARED AND MOUNTED IN MANAGERS OFFICE.

COLUMN LAYOUT NOTE

COLUMN LOCATIONS MUST BE LOCATED AS NOT TO INTERFERE WITH DOOR LOCATIONS INDICATED ON PLANS.

GRADING NOTE

WHERE NECESSARY AT SIDE AND REAR WALLS, SITE CONTRACTOR TO TRANSITION DOWN FROM DOORWAYS TO A MIN. OF 4" BELOW SLAB, WHERE APPLICABLE, TO AVOID CONFLICT WITH FINISH OVERLAP AT SLAB. TERMINATING AT THRESHOLDS TO ACCOMMODATE ADA COMPLIANT LANDINGS AT EGRESS DOORS. THIS WILL ALLOW A CONCRETE FINISHING TOOL OR PLATE COMPACTOR UNDER THE BUILDING FINISH TO COMPLETE THE CONCRETE AND ASPHALT WORK NECESSARY. REFER TO CIVIL PLANS FOR EXACT GRADE HEIGHTS AND TRANSITIONS.

NOTE

THE ELEVATION OF THE FLOOR SURFACE ON BOTH SIDES OF ANY DOOR SHALL NOT VARY BY MORE THAN 1/2" INCH FOR A DISTANCE NOT LESS THAN THE WIDTH OF THE WIDEST LEAF. PER NFPA 101, SECTION 7.2.1.3.1 & 7.2.1.3.2.

NOTE

GENERAL CONTRACTOR SHALL BE RESPONSIBLE FOR ENSURING THAT ALL CONSTRUCTION IS IN COMPLIANCE WITH ALL LOCAL, STATE AND NATIONAL CODES CONCERNING THE JURISDICTION AND WITH THE APPLICABLE PERMITS. THE GC SHALL CORRECT ANY DEFICIENCIES IN THE CONSTRUCTION DOCUMENTS FOR THE PROJECT. IF CONFLICT OF INFORMATION IS FOUND, THE GC SHALL RESOLVE THE CONFLICTS PRIOR TO PROCEEDING.

NOTE

GENERAL CONTRACTOR TO PROVIDE KEY BOX FOR LOCK ACCESS DURING PUNCHOUT AND TURNOVER. COORDINATION TO MATCH LAST FOUR DIGITS OF STORE NUMBER.

FVWH Architects

LC# AA 0003000
 3336 Grand Blvd, Suite 201
 Holiday, Florida 34690
 Ph. 727.815.3335
 Fax. 727.815.3337

TO THE BEST OF THE KNOWLEDGE OF THE ARCHITECTS AND ENGINEERS, PLANS AND SPECIFICATIONS COMPLY WITH THE APPLICABLE BUILDING, MECHANICAL AND ELECTRICAL CODES AND ALL APPLICABLE MINIMUM FIRE AND SAFETY STANDARDS.

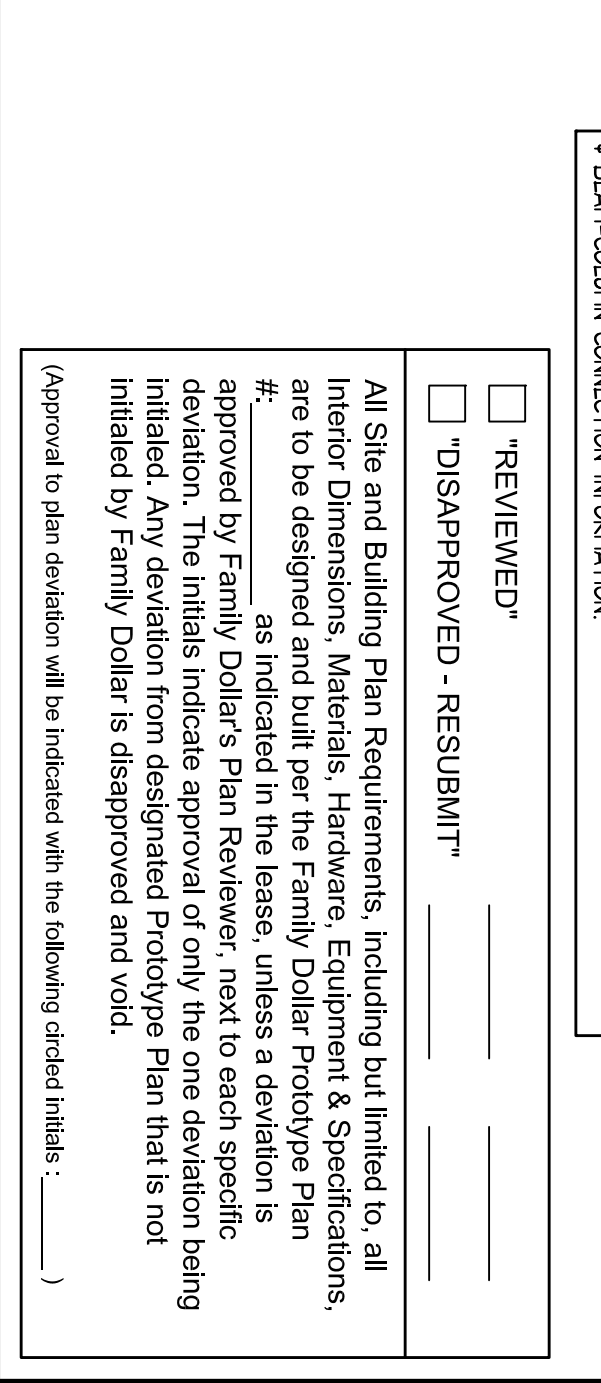
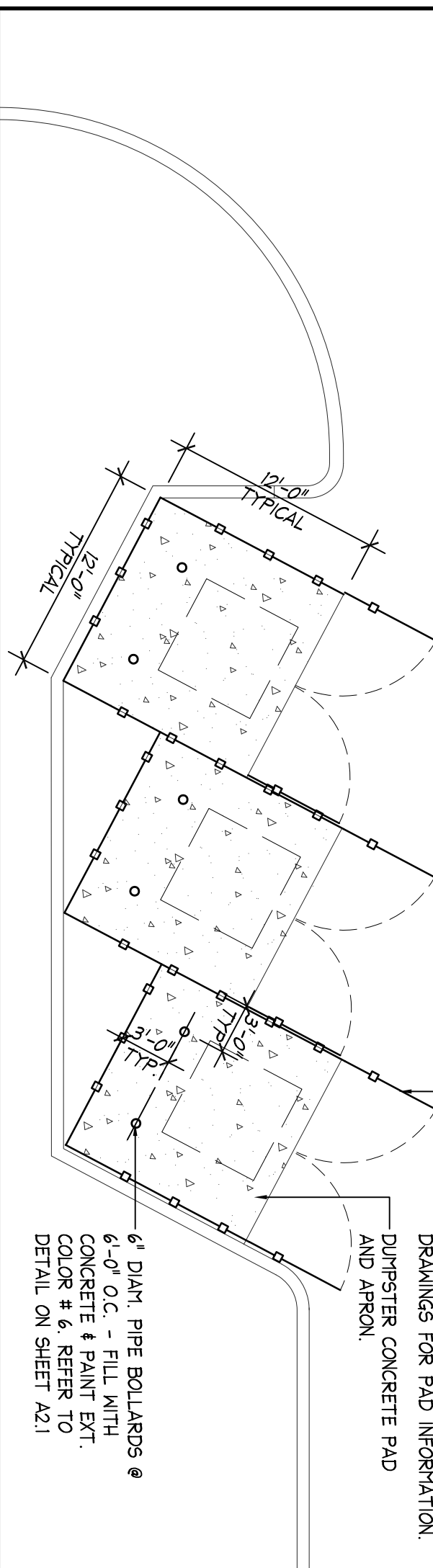
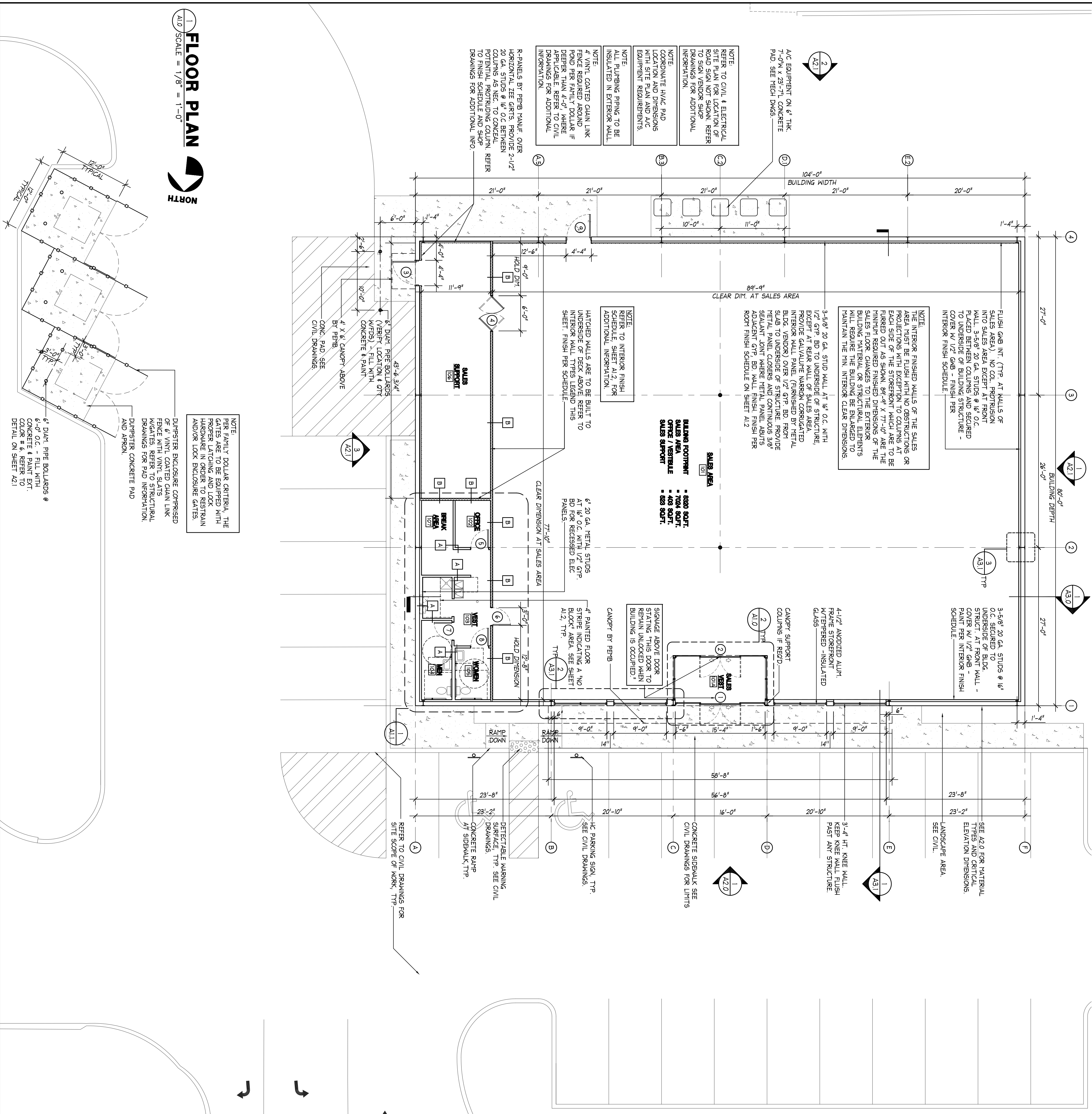
GUY F. FABER
 ME License No. AR.C3105

no.	date	revision descriptions

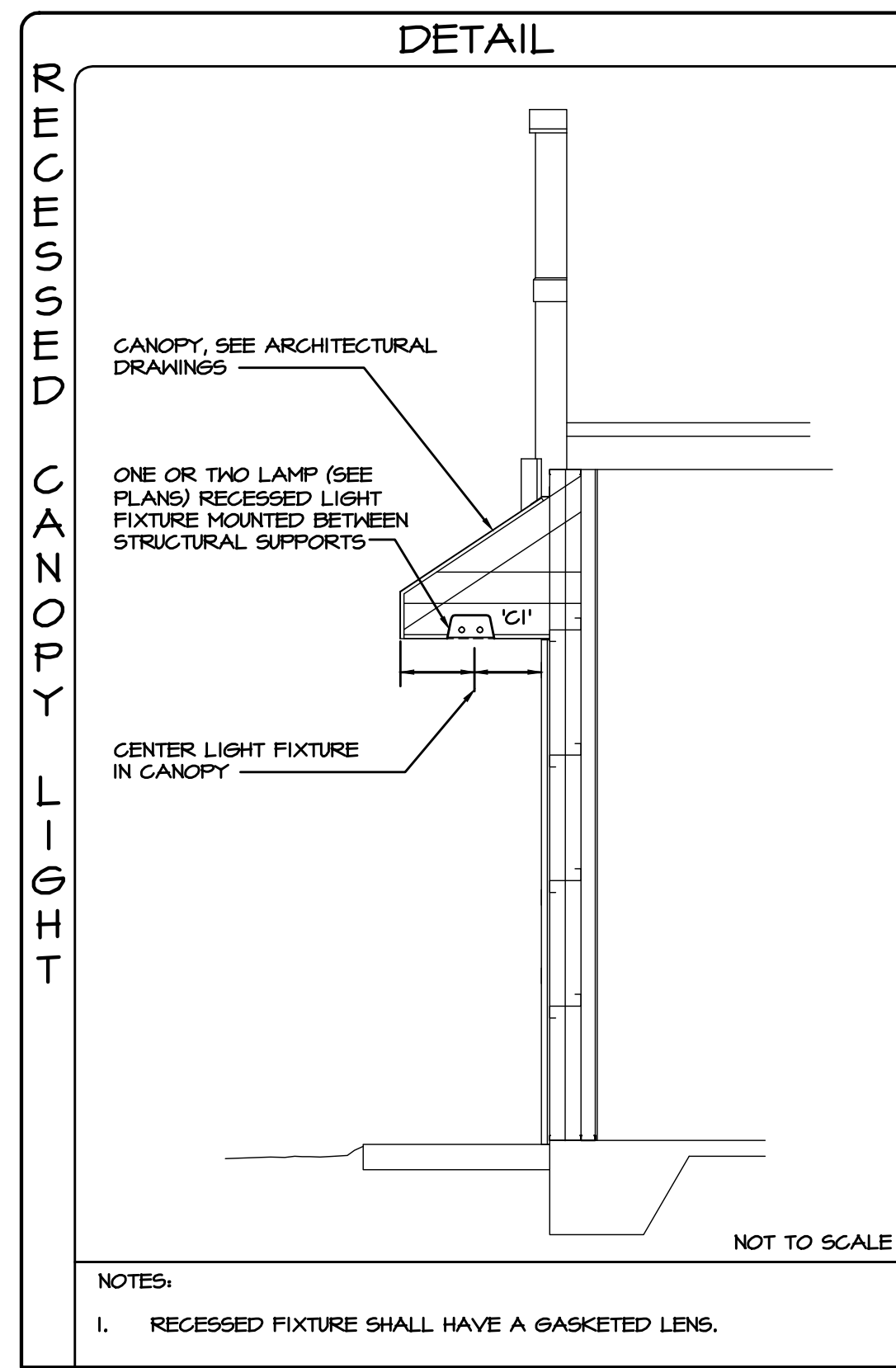
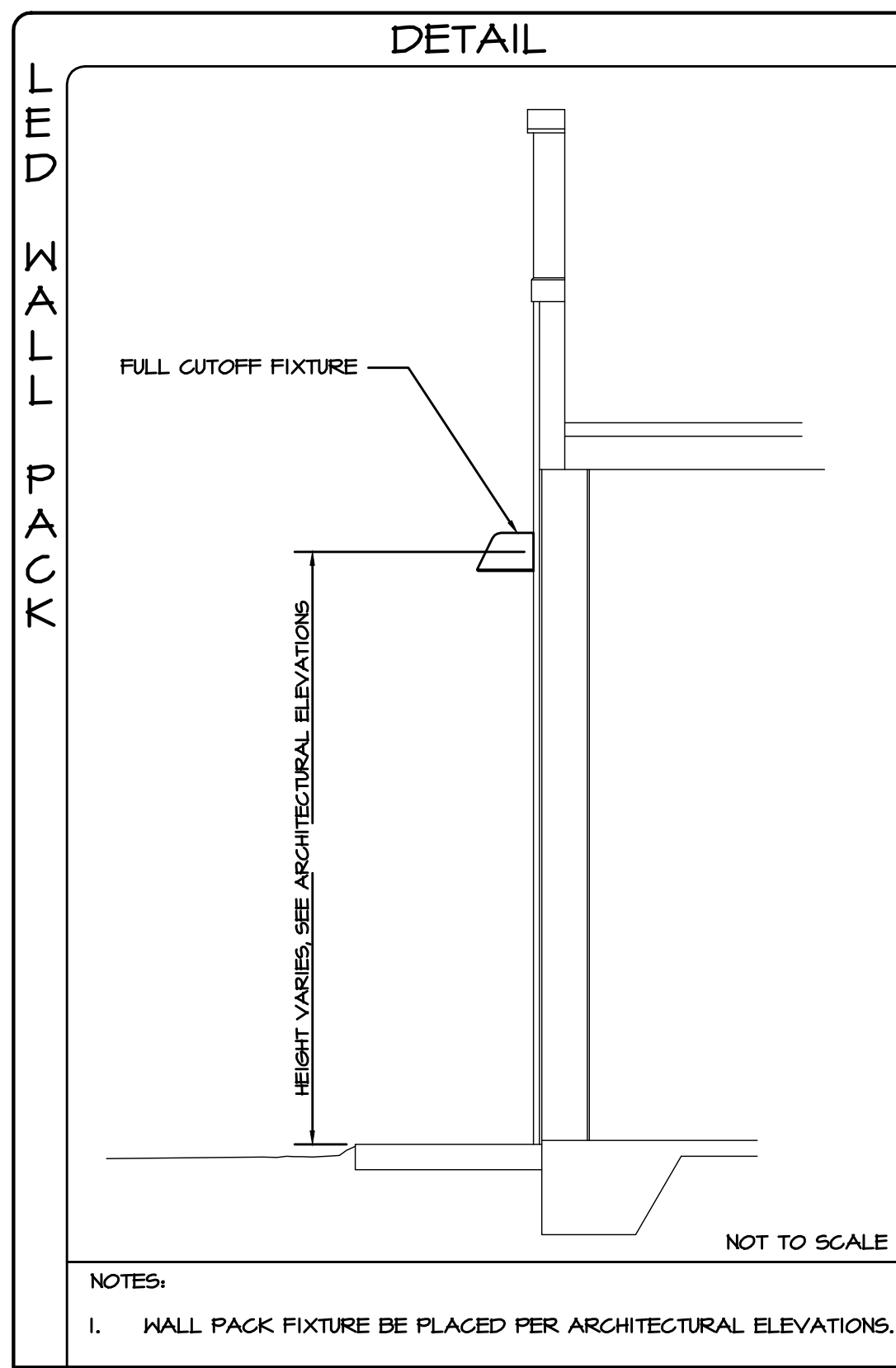
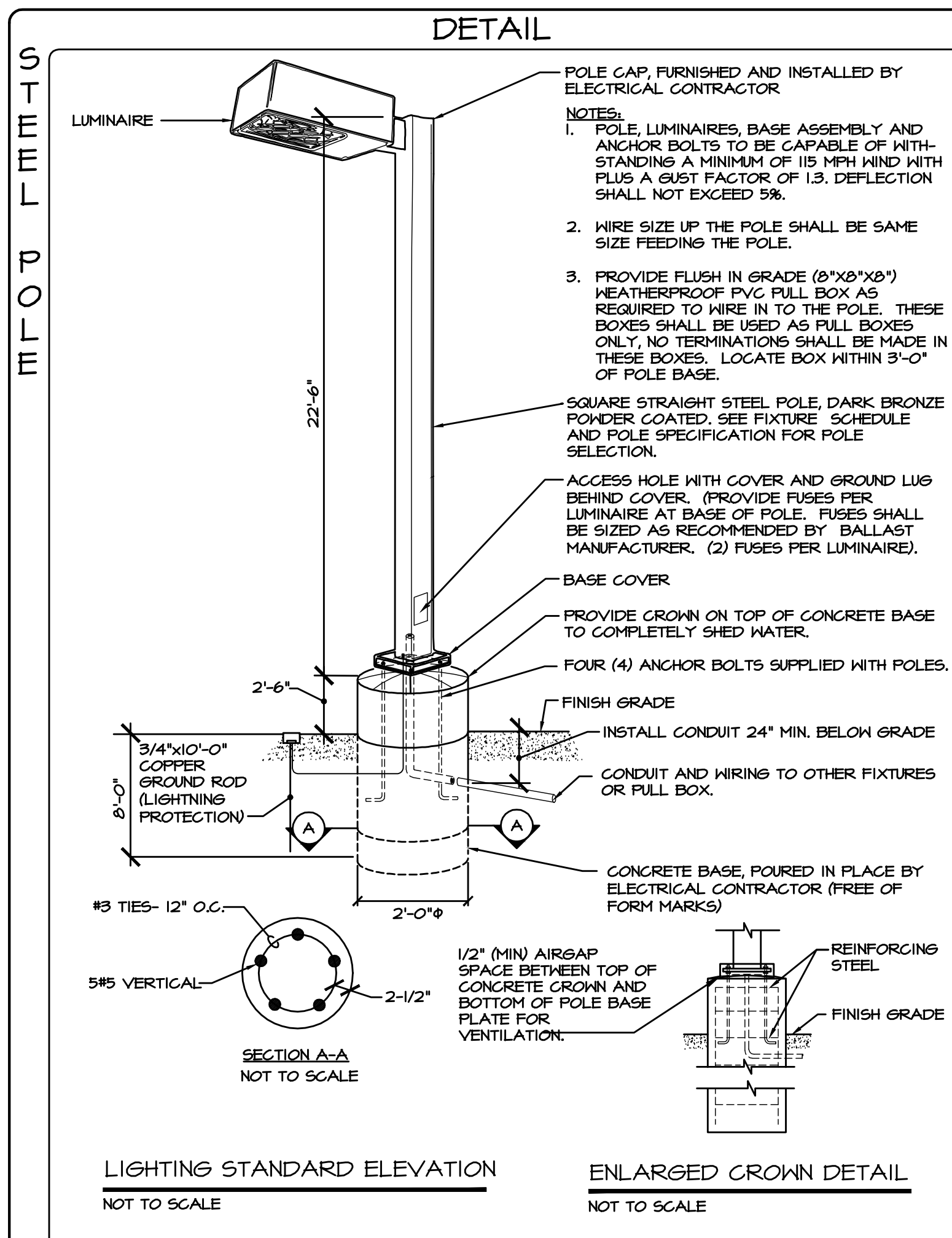
FAMILY DOLLAR
 850 MINOT AVENUE
 AUBURN, MAINE
 PROJECT #710288 PROTOTYPE #2013-03

02.06.14
 date
 14012
 comm. no.
 104 X 80
 FLOOR PLAN
 & NOTES

A1.0



All Site and Building Plan Requirements, including but limited to, all Interior Dimensions, Materials, Hardware, Equipment & Specifications, are to be designed and built per the Family Dollar Prototype Plan # as indicated in the lease, unless a deviation is approved by Family Dollar's Plan Reviewer, next to each specific deviation. The initials indicate approval of only the one deviation being initiated by Family Dollar is disapproved and void.
 (Approval to plan deviation will be indicated with the following circled initials: _____)

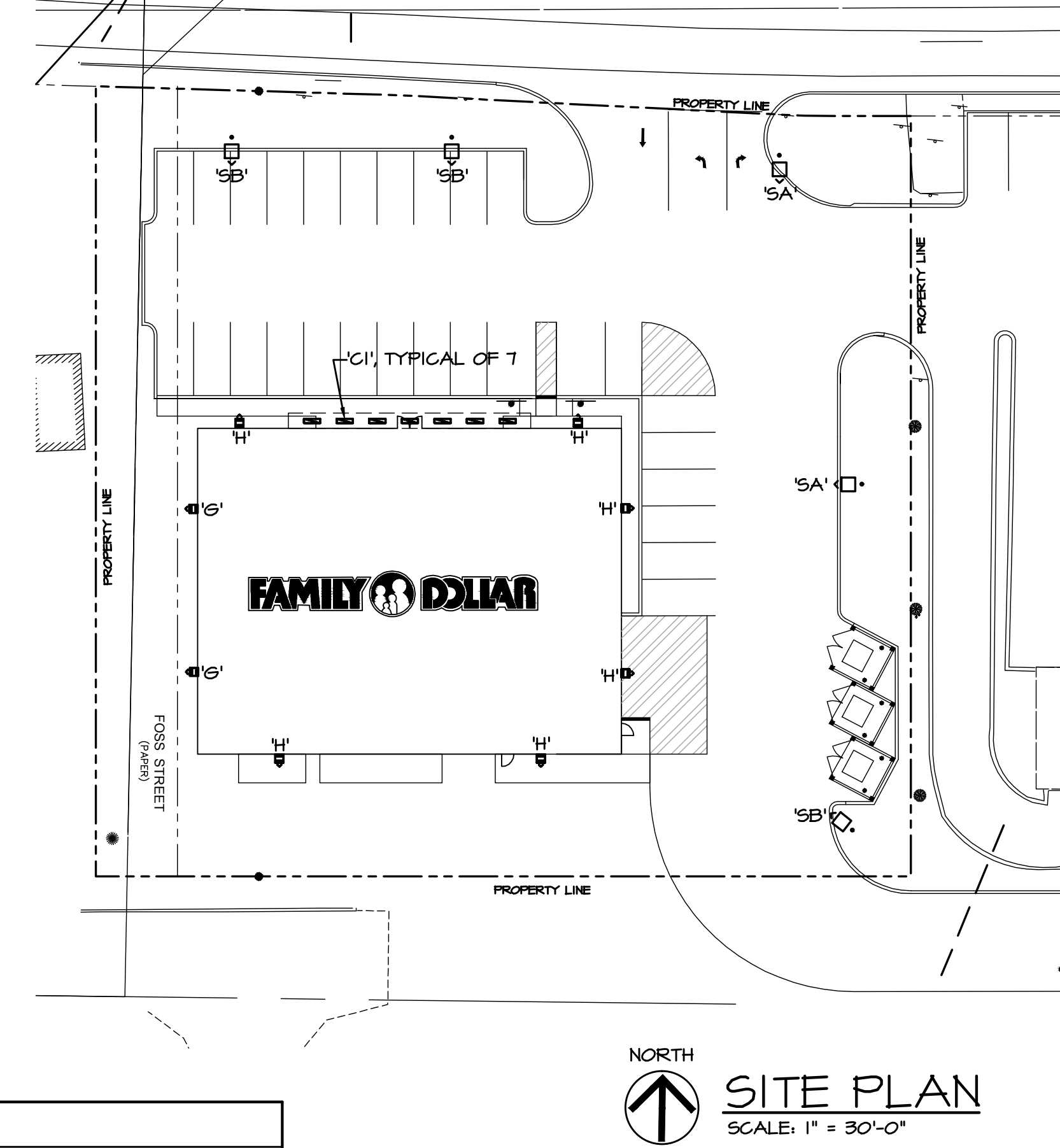


LIGHTING FIXTURE SCHEDULE

TYPE	MANUFACTURER	CATALOG NO.	VOLT	LAMPS	WATTAGE	MOUNTING (SEE DETAILS THIS SHEET)
SA	LITHONIA	KSF2-320M-R4H-SCNA-06, COLOR BY ARCHITECT (FULL CUTOFF)	208	320W MH/PS, ED28, PULSE START	368	MOUNTED ON STEEL POLE WITH CONCRETE BASE
SB	LITHONIA	KSF2-320M-R4SC-SCNA-06, COLOR BY ARCHITECT (FULL CUTOFF)	208	320W MH/PS, ED28, PULSE START	368	MOUNTED ON STEEL POLE WITH CONCRETE BASE
G	LITHONIA	OLW-23-MVOLT (FULL CUTOFF)	120	LED	35	HALL MOUNTED
H	LITHONIA	CSXW-LED-130BT00-40-MVOLT-SR4 (FULL CUTOFF)	120	LED	75	HALL MOUNTED
CI	LITHONIA	WRT-F-32 (FULL CUTOFF)	120	(2) F32 TB	55	RECESSED IN CANOPY

GENERAL NOTES:

- ELECTRICAL CONTRACTOR SHALL PROVIDE NECESSARY MOUNTING HARDWARE AND ACCESSORIES FOR ALL FIXTURES AND POLES. LIGHT FIXTURE AND MOUNTING HARDWARE TO BE PURCHASED THRU FAMILY DOLLAR NATIONAL ACCOUNT E.D.I. - (704) 312-3040 (NO EXCEPTIONS).
- PROVIDE FUSES FOR ALL H.I.D. LIGHTING FIXTURES.
- FUSES SHALL BE INSTALLED AT THE BASE OF POLE.



LIC.# AA 0003300
 3336 Grand Blvd. Suite 201
 Holiday, Florida 34690
 Ph. 727. 815. 3336
 Fax 727. 815. 3337

TO THE BEST OF THE KNOWLEDGE OF THE ARCHITECTS AND ENGINEERS, PLANS AND SPECIFICATIONS COMPLY WITH THE APPLICABLE MINIMUM BUILDING CODES AND THE APPLICABLE MINIMUM FIRE SAFETY STANDARDS.

revision descriptions

date

no.

no.

PROJECT #710258

PROTOTYPE #2013-03

LIGHT POLE SHOP DRAWINGS

INCLUDED WITH THE POLE SHOP DRAWING SUBMITTAL SHALL BE A SIGNED AND SEALED DRAWING OF THE SITE LIGHTING POLE BASE DESIGN SHOWING MINIMUM GROUND DEPTH. CALCULATION SHALL BE PERFORMED BY A REGISTERED PROFESSIONAL ENGINEER WITH AN ACTIVE LICENSE IN THE STATE OF MAINE. CALCULATION SHALL BE BASED ON SOIL INFORMATION AT ACTUAL SITE.

LITHONIA LIGHTING KSF2-320M-R4-W / KSF2-320M-R4SC

FEATURES & SPECIFICATIONS

INTRODUCTION - Ideal for car lots, event lighting, parking areas.

CONSTRUCTION - 3" rigid, 20" dia. aluminum alloy body housing formed for vertical light and energy. Non-vented, vented or gasketed designs available in 20" or 24" diameter. The pole and support with one center tap, 24" aluminum. Manufacturer and luminaire housing and other items are assembled with an integral design, mounted directly on the pole into the door frame, and another gasket applied to the housing.

FINISH - Dark bronze powder coated finish. Available in other finishes on request.

SPICES - Includes an optional and separate top cap for luminaire and/or support. Reflective paint with top lens bezels and an optional anti-reflective. Five (5) finishes available: Type I (standard), Type II (optional), Type III (optional), Type IV (optional), Type V (optional). Lens is 1/2" thick impact resistant tempered glass with thermally applied UV protected finish.

ELECTRICAL - Rated for indoor use with maximum ambient temperature 100°F. The pole and support are rated for 208V and 240V AC, 60Hz, 1-phase, 3-wire, with neutral and ground. The pole and support are rated for 208V and 240V AC, 60Hz, 1-phase, 3-wire, with neutral and ground. The pole and support are rated for 208V and 240V AC, 60Hz, 1-phase, 3-wire, with neutral and ground.

INSTALLATION - Standard aluminum pole for pole or wall mounting is designed in standard center. Optional mounting available.

LIMITS - 12" dia. standard, 18" dia. optional. CSA Certified (see Options). 10" dia. for 24" ambient temperature and wet location. PNEI rated.

NOTE: Specifications subject to change without notice.

LITHONIA LIGHTING OLW-23

FEATURES & SPECIFICATIONS

INTRODUCTION - Provides maintenance free general illumination for outdoor use in residential and commercial applications such as walkways, patios, pool areas, and other areas where maintenance free, long life, energy saving lighting is required.

CONSTRUCTION - Solid, weather-resistant aluminum housing with a bronze finish.

SPICES - Includes an optional and separate top cap for luminaire and/or support. Reflective paint with top lens bezels and an optional anti-reflective. Five (5) finishes available: Type I (standard), Type II (optional), Type III (optional), Type IV (optional), Type V (optional). Lens is 1/2" thick impact resistant tempered glass with thermally applied UV protected finish.

ELECTRICAL - Rated for indoor use with maximum ambient temperature 100°F. The pole and support are rated for 120V and 240V AC, 60Hz, 1-phase, 3-wire, with neutral and ground.

INSTALLATION - Wall or air mount. Mounting hardware included.

LIMITS - UL Certified for US safety standards. CE Certified in Canada safety standards. Wet location listed.

NOTE: Specifications subject to change without notice.

LITHONIA LIGHTING CSXW-LED-130BT00-SR4-MVOLT

FEATURES & SPECIFICATIONS

INTRODUCTION - The Contour Series LED luminaire is ideal for commercial wet mounted applications where traditional metal halide luminaires are typically used. With a choice of three light levels, the luminaire provides up to 80% in energy savings and can reduce maintenance time while providing energy savings up to 80%.

CONSTRUCTION - Rugged, die-cast, single piece aluminum housing. 180-degree flow through design for easy cleaning and maintenance. Die-cast, weather-resistant aluminum housing with a bronze finish. Includes an optional and separate top cap for luminaire and/or support. Reflective paint with top lens bezels and an optional anti-reflective. Five (5) finishes available: Type I (standard), Type II (optional), Type III (optional), Type IV (optional), Type V (optional). Lens is 1/2" thick impact resistant tempered glass with thermally applied UV protected finish.

ELECTRICAL - Rated for indoor use with maximum ambient temperature 100°F. The pole and support are rated for 120V and 240V AC, 60Hz, 1-phase, 3-wire, with neutral and ground.

INSTALLATION - Standard aluminum pole for pole or wall mounting is designed in standard center. Optional mounting available.

LIMITS - UL Certified for US safety standards. CE Certified in Canada safety standards. Wet location listed.

NOTE: Specifications subject to change without notice.

LITHONIA LIGHTING WRT-F-32

FEATURES & SPECIFICATIONS

INTRODUCTION - General illumination for indoor and outdoor commercial applications. Ideal for shops, retail stores, restaurants, bars, and other commercial applications where maintenance free, long life, energy saving lighting is required.

CONSTRUCTION - Rugged, die-cast, single piece aluminum housing. 180-degree flow through design for easy cleaning and maintenance. Die-cast, weather-resistant aluminum housing with a bronze finish. Includes an optional and separate top cap for luminaire and/or support. Reflective paint with top lens bezels and an optional anti-reflective. Five (5) finishes available: Type I (standard), Type II (optional), Type III (optional), Type IV (optional), Type V (optional). Lens is 1/2" thick impact resistant tempered glass with thermally applied UV protected finish.

ELECTRICAL - Rated for indoor use with maximum ambient temperature 100°F. The pole and support are rated for 120V and 240V AC, 60Hz, 1-phase, 3-wire, with neutral and ground.

INSTALLATION - Standard aluminum pole for pole or wall mounting is designed in standard center. Optional mounting available.

LIMITS - UL Certified for US safety standards. CE Certified in Canada safety standards. Wet location listed.

NOTE: Specifications subject to change without notice.

Series	Wattage	Distribution	Ballast	Magnetic	Mechanical	Asst. temp.	Asst. temp.	Asst. temp.
KSF2	368	20	130 347	MSR	Magnetic	Asst. temp.	Asst. temp.	Asst. temp.
KSF2	368	20	130 347	MSR	Magnetic	Asst. temp.	Asst. temp.	Asst. temp.
KSF2	368	20	130 347	MSR	Magnetic	Asst. temp.	Asst. temp.	Asst. temp.

Options:

1. LED luminaire

2. LED luminaire

3. LED luminaire

4. LED luminaire

5. LED luminaire

6. LED luminaire

7. LED luminaire

8. LED luminaire

9. LED luminaire

10. LED luminaire

Series	Wattage	Distribution	Ballast	Magnetic	Mechanical	Asst. temp.	Asst. temp.	Asst. temp.
OLW	35	20	130 347	MSR	Magnetic	Asst. temp.	Asst. temp.	Asst. temp.
OLW	35	20	130 347	MSR	Magnetic	Asst. temp.	Asst. temp.	Asst. temp.
OLW	35	20	130 347	MSR	Magnetic	Asst. temp.	Asst. temp.	Asst. temp.

Options:

1. LED luminaire

2. LED luminaire

3. LED luminaire

4. LED luminaire

5. LED luminaire

6. LED luminaire

7. LED luminaire

8. LED luminaire

9. LED luminaire

10. LED luminaire

Series	Wattage	Distribution	Ballast	Magnetic	Mechanical	Asst. temp.	Asst. temp.	Asst. temp.
CSXW	75	20	130 347	MSR	Magnetic	Asst. temp.	Asst. temp.	Asst. temp.
CSXW	75	20	130 347	MSR	Magnetic	Asst. temp.	Asst. temp.	Asst. temp.
CSXW	75	20	130 347	MSR	Magnetic	Asst. temp.	Asst. temp.	Asst. temp.

Options:

1. LED luminaire

2. LED luminaire

3. LED luminaire

4. LED luminaire

5. LED luminaire

6. LED luminaire

7. LED luminaire

8. LED luminaire

9. LED luminaire

10. LED luminaire

Series	Wattage	Distribution	Ballast	Magnetic	Mechanical	Asst. temp.	Asst. temp.	Asst. temp.
WRT	55	20	130 347	MSR	Magnetic	Asst. temp.	Asst. temp.	Asst. temp.
WRT	55	20	130 347	MSR	Magnetic	Asst. temp.	Asst. temp.	Asst. temp.
WRT	55	20	130 347	MSR	Magnetic	Asst. temp.	Asst. temp.	Asst. temp.

Options:

1. LED luminaire

2. LED luminaire

3. LED luminaire

4. LED luminaire

5. LED luminaire

6. LED luminaire

7. LED luminaire

8. LED luminaire

9. LED luminaire

10. LED luminaire

SOUHEIL CHEHAYEB, P.E.
 CONSULTING PROFESSIONAL ENGINEER

3702 AZEEL ST.
 TAMPA, FL 33609 (813) 876-1415
 (fax) 876-0919

LIC # 11538 SOUHEIL CHEHAYEB 14-28

- "REVIEWED"
- "DISAPPROVED - RESUBMIT"

All Site and Building Plan Requirements, including but limited to, all Interior Dimensions, Materials, Hardware, Equipment & Specifications, are to be designed and built per the Family Dollar Prototype Plan #_____ as indicated in the lease, unless a deviation is approved by Family Dollar's Plan Reviewer, next to each specific deviation. The initials indicate approval of only the one deviation being initiated. Any deviation from designated Prototype Plan that is not initiated by Family Dollar is disapproved and void.

(Approval to plan deviation will be indicated with the following circled initials: _____)

FAMILY DOLLAR

850 MINOT AVENUE
 AUBURN, MAINE

02.06.14
 date
 14012
 comm. no.

SL-1

**ME - Auburn
Minot Ave.**

SITE PLAN - 1



SCALE: 1" = 60'

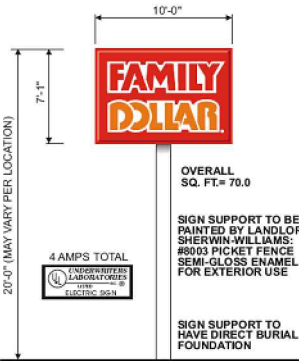
(A) PREFERRED BUILDING SIGNAGE
48" LINEAR CLOUDS
W/ 5'-0" MEDALLION



OVERALL
SQ. FT. = 144.17

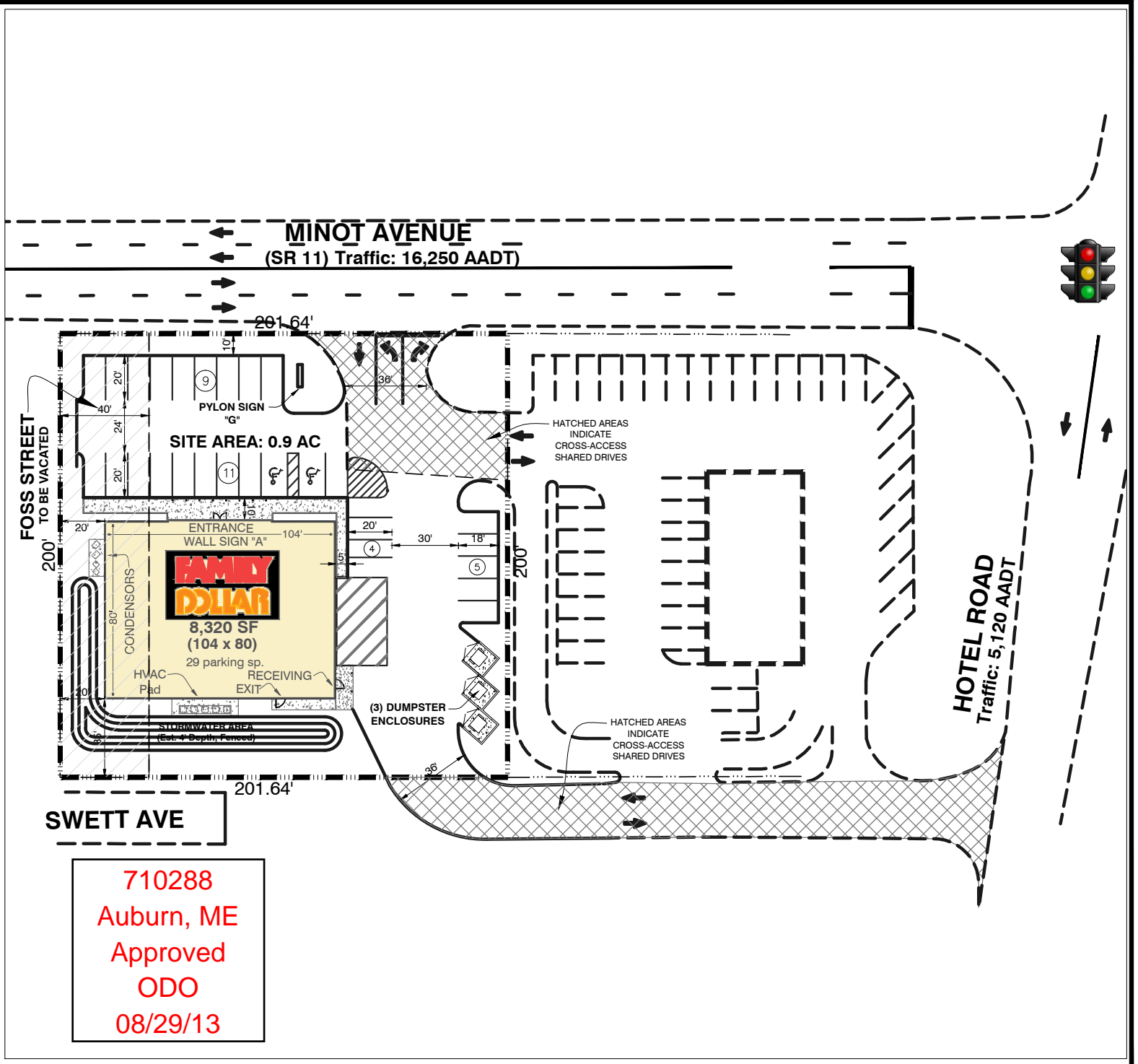
WEIGHT = 750#

(G) PREFERRED PYLON SIGNAGE
DOUBLE FACE PYLON OPTIONS



SIGN SUPPORT TO BE
PAINTED BY LANDLORD
SHERWIN-WILLIAMS:
#8003 PICKET FENCE
SEMI-GLOSS ENAMEL
FOR EXTERIOR USE

SIGN SUPPORT TO
HAVE DIRECT BURIAL
FOUNDATION



Prepared For:



Hunt Real Estate

5100 W. Kennedy Blvd #100
Tampa, FL 33609
813-289-5511

710288
Auburn, ME
Approved
ODO
08/29/13