



# City Council Meeting and Workshop

## February 4, 2013

### Agenda

#### 5:30 P.M. Workshop

- A. Constitutional Amendment on Campaign Finance – Clint Deschene
- B. Comprehensive Plan Implementation Process-Howard Kroll
- C. Central Park Budget and Design – Dan Goyette
- D. New Auburn River Trail update – Reine Mynahan
- E. Joint Agency Budget Committee – Clint Deschene

#### 7:00 P.M. City Council Meeting

##### Pledge of Allegiance

- I. Consent Items** – All items listed with an asterisk (\*) are considered as routine and will be approved in one motion. There will be no separate discussion of these items unless a Councilor or citizen so requests. If requested, the item will be removed from the consent agenda and considered in the order it appears on the agenda.

##### II. Minutes

January 22, 2013

##### III. Reports

Mayor's Report

##### Committee Reports

- **Transportation**
  - Androscoggin Transportation Resource Center – Mayor LaBonte
  - Lewiston Auburn Transit – Councilor Gerry
  - Airport, Railroad – Councilor Hayes
  - Bike-Ped Committee – Councilor Shea
- **Housing**
  - Community Development Block Grant, Neighborhood Stabilization Program, Auburn Housing Authority – Councilor Gerry
- **Economic Development**
  - L-A Economic Growth Council, Auburn Business Development Corp. – Councilor Shea
- **Education**
  - Auburn School Committee – Councilor Young
  - Auburn Public Library – Councilor LaFontaine
  - Great Falls TV – Councilor Young and Councilor Shea
- **Environmental Services**
  - Auburn Water District, Auburn Sewerage District – Councilor Crowley
  - Mid-Maine Waste Action Corp. – Councilor Walker
- **Recreation**
  - Recreation Advisory Board – Councilor Walker
- **Public Safety**

# Auburn City Council Meeting & Workshop

February 4, 2013

---

- LA 911 – Councilor Walker

## City Councilors' Reports

## City Manager's Report

### IV. Communications, Presentations and Recognitions

- Proclamation – George E. Roy
- Portrait presentation – Former Mayor John Jenkins
- Swear in and badge pinning ceremony – Auburn Police Department

- V. **Open Session** – Members of the public are invited to speak to the Council about any issue directly related to City business which is *not on this agenda*. Time limit for open sessions, by ordinance, is 45 minutes.

### VI. Unfinished Business

#### 1. Order 12-01312013

Approving the design and updated budget for the double sheet Ice Arena.

### VII. New Business

### VIII. Executive Session

- IX. **Open Session** - Members of the public are invited to speak to the Council about any issue directly related to City business which is *not on this agenda*.

### X. Future Agenda/Workshop Items

### XI. Adjournment

**Executive Session:** On occasion, the City Council discusses matters which are required or allowed by State law to be considered in executive session. Executive sessions are not open to the public. The matters that are discussed in executive session are required to be kept confidential until they become a matter of public discussion. In order to go into executive session, a Councilor must make a motion in public. The motion must be recorded, and 3/5 of the members of the Council must vote to go into executive session. An executive session is not required to be scheduled in advance as an agenda item, although when it is known at the time that the agenda is finalized, it will be listed on the agenda. The only topics which may be discussed in executive session are those that fall within one of the categories set forth in Title 1 M.R.S.A. Section 405(6). Those applicable to municipal government are:

- A. Discussion of personnel issues
- B. Discussion or consideration by a school board of suspension or expulsion
- C. Discussion or consideration of the condition, acquisition or the use of real or personal property permanently attached to real property or interests therein or disposition of publicly held property or economic development only if premature disclosures of the information would prejudice the competitive or bargaining position of the body or agency
- D. Labor contracts
- E. Contemplated litigation
- F. Discussions of information contained in records made, maintained or received by a body or agency when access by the general public to those records is prohibited by statute;
- G. Discussion or approval of the content of examinations administered by a body or agency for licensing, permitting or employment purposes; consultation between a body or agency and any entity that provides examination services to that body or agency regarding the content of an examination; and review of examinations with the person examined; and

# Auburn City Council Meeting & Workshop

## February 4, 2013

---

- H. Consultations between municipal officers and a code enforcement officer representing the municipality pursuant to Title 30-A, section 4452, subsection 1, paragraph in the prosecution of an enforcement matter pending in District Court when the consultation relates to that pending enforcement matter.



## City Council Workshop Information Sheet

City of Auburn

**Council Workshop Date:** February 4, 2013

**Item** A

**Author:** Sue Clements-Dallaire, City Clerk

**Subject:** Constitutional Amendment on Campaign Finance

**Information:** The Mayor and Council have been asked to consider passing a resolve supporting an amendment to the U.S. Constitution in regards to campaign finance issues.

**Financial:** None

**Action Requested at this Meeting:** Discussion.

**Previous Meetings and History:** January 7, 2013 workshop.

**Attachments:** Draft resolve

## Resolution on U.S. Constitutional Amendment on Campaign Finance

(as prepared by Craig Saddlemire, Lewiston City Councilor and adopted unanimously by the Lewiston City Council, but with the city name changed to Auburn for consideration by the Auburn City Council)

WHEREAS, government of, by, and for the people is a cherished American ideal, and the right of self-governance is fundamental; and

WHEREAS, it is the right of the people to alter the government when it becomes destructive to the goals of securing the right to life, liberty, and the pursuit of happiness articulated in the Declaration of Independence; and

WHEREAS, United States Supreme Court rulings, beginning with *Buckley v. Valeo* and continuing through *Citizens United v. FEC* and others, have interpreted the First Amendment and its application to elections in such a way as to disproportionately elevate the role of wealthy special interests in elections and diminish the voices and influence of ordinary Americans; and

WHEREAS, the citizens of the City of Auburn are deeply concerned that the proliferation of unlimited campaign contributions can unfairly influence our local, state, and federal elections, elected representatives, and public policy; and

WHEREAS, the current legal landscape severely constrains the range of options available to correct these problems through normal legislative means.

THEREFORE BE IT RESOLVED that the City of Auburn hereby calls on our state and federal representatives to support an amendment to the Constitution of the United States that would:

First, differentiate the spending of money in elections from First Amendment activities;

Second, empower state and federal governments to regulate the raising and spending of funds in elections;

Third, clarify that only human beings, not Corporations, are endowed with constitutional rights relating to freedom of speech.

BE IT FURTHER RESOLVED that the City of Auburn calls on other communities and jurisdictions across the state to join this action by passing similar resolutions.



## City Council Workshop Information Sheet

City of Auburn

**Council Workshop Date:** February 4, 2013

**Item** B

**Author:** Howard Kroll, Assistant City Manager and Eric Cousens, City Planner/Director of Planning and Permitting

**Subject:** Comprehensive Plan Implementation Process

---

**Information:** The City's Comprehensive Plan, adopted on April 19, 2011, serves as a guide for the decisions the City must make about growth, development, redevelopment, and change over the coming decade and beyond. The Plan continues the City's established long range planning process, and creates a framework for managing future development.

The Plan is divided into three parts. Part A sets out the policy recommendations and how the City should address the issues facing the community and includes a land use plan that looks at how Auburn should and should not grow, develop/redevelop, and change over the next ten to twenty years.

Part B lays out the actions needed to achieve the policies proposed in Part A. It identifies and prioritizes the capital facilities needed in the future, sets out a detailed program for carrying out the various strategies, and assigns responsibility for the implementation of each.

Part C contains background information, an overview of the City's ongoing planning activities since the adoption of the previous plan, and inventories of City issues, resources, and facilities.

Our current discussion is focused on Part B and the actions needed to achieve policy objectives. Attached is a spread sheet detailing the list of specific implementation tasks and status updates from city departments. It has been brought to Staff's attention that there may be a misconception that implementation has not started or is off to a slow start; however, that is not the case. It is important to note that the implementation process is ongoing throughout the 10-20 year plan period and beyond and that the document will be modified over time to meet new community needs and take advantage of opportunities as they arise. The Plan is a living document that Staff uses on a daily basis to guide decisions and ensure decisions are made in accordance with long range Council set policies.

---

**Financial:** None

---

**Action Requested at this Meeting:** None.

---

**Previous Meetings and History:** Adoption April 19, 2011 and individual items discussed at many meetings.

---

**Attachments:** Implementation Tasks Spreadsheet with Department updates.  
Memo explaining spreadsheet format.

# City of Auburn, Maine

*"Maine's City of Opportunity"*

## Office of Planning & Permitting

To: Auburn City Council

From: Eric Cousens, Director of Planning and Permitting

Re: Comprehensive Plan Implementation Update Sheet

Date: January 30, 2013

Attached is a spread sheet listing implementation tasks identified in the Auburn Comprehensive Plan. It identifies ongoing, short term, long term and longer term tasks from the Plan. The left most column is numbered just for reference in future discussions to help navigate the sheets. The next column to the right identifies the referenced sections of the Plan that provides additional details on the listed task or activity. The next column to the right gives a title to each task with some very basic description (see referenced sections of the Plan for additional details). The next column to the right identifies the Department or entity responsible for implementation of the item or task. The column on the right hand side of each page describes progress to date on that item.

	Policy Reference	Activity	Primary Responsibility	Comprehensive Plan Implementation Update	
Ongoing Activities					
1	<b>Ch3-A.4</b>	Regional sewerage – continue to work to treat sewage on a regional basis	Auburn Sewerage District		1/8/12 Working with LAWPC to update Treatment with anaerobic digester and Sludge Compost Facility updates. New anaerobic digester facility is expected to come on the line in April/May 2013. digester will help control operational costs. 2013 Budget is \$34,000 less than 2012's which will minimize future rate impacts.
2	<b>Ch3-A.5</b>	Regional water supply – continue to work to provide public water on a regional basis	Auburn Water District		Many Ongoing Efforts - Poland Extension, Industrial Extensions, Line replacements. AWD/LWD have multiple Interlocal Agreements for sharing of water intake, UV plant, chemical treatment facilities, water quality laboratory, SCADA technicians, Hazmat Team, ect.-all in support of water supply.
3	<b>Ch1-A.1.5.a</b>	Lake Auburn – monitor water quality	Auburn Water District (AWD) & LAWPC		LAWPC - Algae Bloom this fall and Lake Diagnostic Study underway.Engineering consultants to present results of Lake Study Feb 13. AWD maintains joint water quality lab w/ Lewiston. Staff has ongoing sample program for lake, tributaries, algae, ect.
4	<b>Ch1-B.1.1a</b>	Water supply – protect Lake Auburn water quality	AWD & LAWPC		Lake Water Quality Diagnostic Study and City effort to review regulations for updates with TRC and Consultant RFP in there process of drafting. Ongoing Lake and Water Quality Diagnostic Study. LAWPC funded police patrols, swimming violations, USDA gull harassment. 2010 Lake Auburn Watershed Master plan
5	<b>Ch1-A.3.1.b &amp; Ch1-A.3.2.c</b>	Rivers – support land conservation	City Council & Conservation Organizations		FERC Dam Licensing and land conservation efforts. Working with property owner along Little Androscoggin as part of settlement agreement.
6	<b>Ch1-A.1.3.b</b>	Lake Auburn – establish City land conservation priority	City Council & LAWPC		On-going. LAWPC will entertain land purchase if approached by willing seller and acquisition supports watershed protection & water quality.
7	<b>Ch1-A.3.1.c &amp; Ch1-A.3.2.d</b>	Rivers – improve and restore fish populations	City Council & MDIF&W		Alewife stocking program. Fishing Regulations. Shoreland zoning and floodplain protection as well as creating public access to existing resources.
8	<b>Ch1-F.1.2.a</b>	Population – continue to provide a range of housing opportunities	City Manager		Zoning updates to allow additional housing.
9	<b>Ch1-H.1.2.a</b>	Community development – assure that City services are provided equitably	City Manager		Budgeting and structure improvements
10	<b>Ch1-G.3.2.d</b>	Transportation – participate in regional commuter transit programs	City Manager & ATRC/AVCOG		Resolve with Lewiston and Portland, Transit Station, Participation in process and taking position on Maine Turnpike Tolls
11	<b>Ch1-C.1.2.a &amp; Ch3-A.1.a</b>	Emergency services – support joint local and regional police and fire services	City Manager & Council		Cooperation and mutual aid with surrounding communities.
12	<b>Ch1-C.4.1.b &amp; Ch3-A.2</b>	Municipal services – expand joint services	City Manager & Council		Joint Purchasing and Joint Agencies
13	<b>Ch1-E.1.6.a &amp; Ch3-B.2</b>	Cultural – collaborate with Lewiston and the region on cultural venues and activities	City Manager & Council		
14	<b>Ch1-H.2.6.b &amp; Ch1-H.2.6.c</b>	Housing – support development of subsidized and affordable housing	City Manager & Council		Ongoing. Main Street, Academy Street, Webster School, and other recent projects
15	<b>Ch1-I.2.3.a</b>	Economic development – use TIFs and financial incentives to attract investments	City Manager & Council		Ongoing discussions with Council and updates to policy. Report on LA TIFs coming soon
16	<b>Ch1-H.1.2.d</b>	Community development – encourage neighborhoods to work with City departments	City Manager & Council		Council touched on this goal at goal setting day. Staff generating map for discussion.
17	<b>Ch1-B.2.1.c &amp; Ch1-I.2.2.a &amp; Ch2-FLUP</b>	Sewers – work with property owners and developers to upgrade sewers to serve Growth Areas (see FLUP)	City Manager & Council & Economic Development Department		Auburn Industrial Park Extension
18	<b>Ch1-I.2.1.a &amp; Ch3-D.1</b>	Economic development –promote the L/A brand through regional economic development organizations	City Manager & Council & LAEGC		CIP Greenway Signage Proposal to be considered. Will help create a sense of place, branding and help people find points of interest and businesses.
19	<b>Ch1-I.2.4.c</b>	Economic development – assure that there are adequate re-training programs for adults	City Manager & School Superintendent		Library Programs, School Department
20	<b>Ch1-A.1.2.b</b>	Lake Auburn – provide financial assistance for septic replacement	Community Development Department		CDBG financing is available for malfunctioning disposal systems/subject to income and credit approval



21	<b>Ch1-H.2.1.a</b>	Housing – maintain the quality of older owner-occupied housing	Community Development Department		Funding is currently available for low-income households only.
22	<b>Ch1-H.2.1.b</b>	Housing – maintain the rental housing stock	Community Development Department		Over the 30+ years 2,771 housing units have been improved, many of which were rental properties. There are no funds currently available.
23	<b>Ch1-H.2.6.a</b>	Housing – develop continuum of housing for homeless and people with special needs	Community Development Department		Developed 6 units in 2011 (Tedford housing). Currently under rent up. None other anticipated. This objective is complete.
24	<b>Ch1-H.2.6.e</b>	Housing – purchase and invest in foreclosed properties	Community Development Department		Purchased and rehabilitated 9 properties/purchased and demolished 5 properties. This objective is complete.
25	<b>Ch3-A.3.b</b>	Regional housing – support implementation of regional homeless plan (LAASH)	Community Development Department		Funded consulting services through CDBG Program, wrote RFP, oversight of consulting services contract, coordinated meetings of partners, now working on implementation of 10-Year Plan to End Homelessness. Auburn's commitment is to increase permanent affordable rental housing. This requires collaboration with housing developer and the developer's success in obtaining Low-Income Housing Tax Credits.
26	<b>Ch1-A.6.1.a</b>	Stormwater – conform to Phase II federal requirements	Community Services Department		Ongoing. Annual Permit submitted documenting progress, outreach and maintenance
27	<b>Ch1-A.1.1.a</b>	Lake Auburn - control invasive species	Lake Auburn Watershed Protection Commission (LAWPC)		Milfoil program being expanded at the Basin. Aquatic invasive trailer and boat inspections throughout the summer at the boat launch. LAWPC funding DASH baot ( diver assisted suction harvester) in 2013. Continued diver removal and benthic barrier placements. pursueMDEP remediation grants. Continue aquatic invasive trailer and boat inspections throughout the summer at the boat launch.
28	<b>Ch1-A.1.1.d</b>	Lake Auburn – improve erosion control	LAWPC		waiting on recommendations of Lake Auburn Diagnostic Study. Implemented erosion stabilization projects in 2012 with MDWP grant. \$200,000 in 2013 budget for possible additional remediation.
29	<b>Ch1-A.1.3.a</b>	Lake Auburn – continue land purchase/conservation	LAWPC		AWD/LWD continued to fund LAWPC Sinking Fund in 2013 for possible future land acquisition. Entertain transactions from willing sellers, evaluated on case-by-case basis.
30	<b>Ch1-A.1.4.b &amp; Ch3-A.6</b>	Lake Auburn – promote watershed management outside of Auburn	LAWPC		LAWPC hired full time Education & Outreach Manager for this purpose. Waiting on recommendations of Lake Auburn Diagnostic Study. Plan to reach out to Minot, Turner, Hebron & Buckfield.
31	<b>Ch1-A.1.5.b</b>	Lake Auburn – monitor statewide trends in watershed protection	LAWPC		On-going effort. AWD staff participate on Water Resources Committee of Maine Water Utilities Association. AWD staff actively participate and present at trade seminars.
32	<b>Ch1-E.1.5.a</b>	Recreation – support network of trails in rural areas	Parks & Recreation Department & Snowmobile Clubs		New trails for snowmobilers and pedestrians cross country skiers. Maintenance of existing trails.
33	<b>Ch1-D.1.2.a</b>	Historic – provide information to owners of historic properties	Planning and Permitting Department		Ongoing as we receive inquiries.
34	<b>Ch1-D.1.2.b</b>	Historic – provide information on historic properties and programs to real estate agents	Planning and Permitting Department		Ongoing as we receive inquiries.
35	<b>Ch1-E.1.4.d</b>	Open Space – support participation in current use assessment programs	Planning and Permitting Department		AG/RP zone provides tax savings for large lots and controls growth.
36	<b>Ch1-A.3.1.a &amp; Ch1-A.3.2.a</b>	Rivers – protect/improve water quality	Planning and Permitting Department & Community Services Department		Shoreland zoning.
37	<b>Ch1-A.1.2.a &amp; Ch1-A.1.4.a</b>	Lake Auburn – minimize pollution from changes to existing development and new development	Planning and Permitting Department & LAWPC		2013 objective of new LAWPC Education & Outreach Manager to reach out to existing developments for voluntary education & cooperation. AWD/LAWPC staff will continue to monitor Lake and support City permitting staff (i.e. phosphorus plan and septic design reviews)
38	<b>Ch1-A.7.1.a</b>	Aquifer protection – maintain limits on mining around Townsend Brook	Planning Board & Staff		Ongoing limitation on depth to water table. LAWPC can provide periodic inspections to monitor compliance.
39	<b>Ch1-B.1.2.a</b>	Water supply – require applicants to document sufficient water supply	Planning Board & Staff		Ongoing. Development and permit review. AWD typically provides capacity comment on any proposed connection to public water as part of permit review process.
40	<b>Ch1-C.2.3.a &amp; Ch1-2.10.c</b>	Public works/transportation – limit the need for new roads	Planning Board & Staff		Ongoing. Residential strip depth reduced in most areas.

41	<b>Ch1-A.5.1.d</b>	Floodplains – review and update floodplain maps	Planning Board & Staff & FEMA		Complete map update and public process in 2012. Final maps from FEMA Due in early 2013 and local adoption to follow.
42	<b>Ch1-C.1.2.e</b>	Emergency services – provide police and fire services to airport and Intermodal facility to meet Homeland Security requirements	Police & Fire Chiefs		
43	<b>Ch1-C.1.2.b</b>	Emergency services – develop police volunteer program	Police Chief		Ongoing development and expansion of a successful VIPS Program
44	<b>Ch1-G.2.12.c</b>	Transportation – make enforcement of speed limits a priority	Police Department		Ongoing.
45	<b>Ch1-G.2.8.b</b>	Transportation – enforce truck route designations	Police Department		
46	<b>Ch1-C.2.3.c</b>	Public works – upgrade aging roadways using most durable materials	Public Works Director		The Engineering Department continues to use the CIP to fund both total reconstruction and pavement maintenance projects yearly.
47	<b>Ch1-H.1.2.b</b>	Community development—provide adequate neighborhood and city-wide school facilities	School Committee & Superintendent		
		<b>Policy Reference</b>	<b>Activity</b>	<b>Primary Responsibility</b>	
		<b>Short Term Activities</b>			
		<b>Land Use Ordinance Amendments (Short Term)</b>			
48	<b>Ch1-H.2.1.b</b>	Housing – adopt renovation code and revise fire code		Planning and Permitting Department	International Existing Building Code Adopted - Not as flexible as we had hoped - limited applications. State mandated and cannot be amended at local level.
49	<b>Ch1-D.1.2.c</b>	Historic – adopt a renovation code as part of the building code (see CH1-H.2.1.b)		Planning and Permitting Department & Community Development Department	International Existing Building Code Adopted - Not as flexible as we had hoped - limited applications. State mandated and cannot be amended at local level.
50	<b>Ch1-A.1.2.c &amp; Ch1-A.1.4.c</b>	Lake Auburn – review/revise LAO District septic requirements		Planning Board & LAWPC	RFP being developed to analyze existing requirements and provide a options to Technical Review Committee. TRC to make recommendations for updates in 2013. Suggest holding till results of Lake Auburn Diagnostic Study presented on Feb 13.
51	<b>Ch1-A.1.2.d &amp; Ch1-A.1.4.d &amp; Ch1-A.2.1.c &amp; Ch1-A.2.2.b</b>	Lake Auburn and Taylor Pond – adopt LID standards for changes to existing development and new development		Planning Board & Staff	RFP being developed to analyze existing requirements and provide a options to Technical Review Committee. TRC to make recommendations for updates in 2013. Suggest holding till results of Lake Auburn Diagnostic Study presented on Feb 13.
52	<b>Ch1-A.1.2.e &amp; Ch1-A.1.4.e &amp; Ch1-A.2.2.c</b>	Lake Auburn and Taylor Pond – update Phosphorous Control Ordinance		Planning Board & Staff	RFP being developed to analyze existing requirements and provide a options to Technical Review Committee. TRC to make recommendations for updates in 2013. AWD met with Taylor Pond Assoc in Fall 2012 to discuss. TPA appears supportive of updating ordinance.
53	<b>Ch1-A.1.3.c &amp; Ch1-A.2.2.a &amp; Ch2-FLUP</b>	Lake Auburn and Taylor Pond – maintain Ag/Rural zoning in watersheds		Planning Board & Staff	Ongoing. Comp Plan reduced potential for new residential strips in watershed of Lake Auburn. AWD/LAWPC 100% supportive of effort.
54	<b>Ch1-A.2.1.d &amp; Ch1-A.2.2.e</b>	Taylor Pond – revise sewer connection requirements		Planning Board & Staff	Note: ASD has long-standing impact fee requirement related to original construction of public sewer in 1970's. Fee could be financial deterrent for connecting. Needs to be addressed/discussed TYP home \$1,550.00/ Taylor Pond \$6,700.00
55	<b>Ch1-A.2.2.d</b>	Taylor Pond – expand wetlands protection		Planning Board & Staff	Shoreland Zoning added resource protection to wetland areas.
56	<b>Ch1-A.3.1.f &amp; Ch2-FLUP</b>	Androscoggin River – maintain Ag/Rural zoning in undeveloped portions of watershed		Planning Board & Staff	Ongoing.
57	<b>Ch1-A.3.2.b &amp; Ch2-FLUP</b>	Little Androscoggin River – include undeveloped floodplains in RP District		Planning Board & Staff	Martindale area added. More to be done in future.
58	<b>Ch1-A.4.1.a</b>	Streams – include significant streams in Shoreland Overlay District/Stream Protection District		Planning Board & Staff	Done with Shoreland Zoning Updates.
59	<b>Ch1-A.5.1.a &amp; Ch1-A.5.1.b</b>	Floodplains – maintain/update floodplain management requirements		Planning Board & Staff	Current with State Standards. Updates to follow State Guidelines if they are revised. Maine is already more restrictive with 1' freeboard requirement than some other states.

60	<b>Ch1-A.5.1.c</b>	Floodplains – prohibit filling in mapped floodways		Planning Board & Staff	Current with State Standards. Updates to follow State Guidelines if they are revised.
61	<b>Ch1-A.7.1.c</b>	Aquifer protection – require applicants for development review to provide information on significant aquifers where appropriate		Planning Board & Staff	Ongoing. Development Review and Permitting.
62	<b>Ch1-A.8.1.a</b>	Wetlands – update development review standards for wetlands		Planning Board & Staff	Shoreland Zoning added resource protection to wetland areas. Development Review and Permitting to ensure compliance.
63	<b>Ch1-A.8.1.c &amp; Ch1-A.9.1.a</b>	Wetlands – update Shoreland Zoning requirements with respect to state identified wetlands and significant habitats		Planning Board & Staff	Done with Shoreland Zoning Updates.
64	<b>Ch1-A.9.1.h</b>	Habitat – create incentives for the use of cluster/conservation development		Planning Board & Staff	Planned Unit Development Ordinance does this. Attempt to update further was denied by Council.
65	<b>Ch1-B.1.1.b</b>	Water supply – regulate the impact of development on groundwater		Planning Board & Staff	Ongoing. Development Review and Permitting. Awd might be able to provide support/assistance regarding SAP- Source Water Assessment Program.
66	<b>Ch1-C.2.1.c &amp; Ch2-FLUP</b>	Public facilities – update treatment of municipal facilities in zoning districts		Planning Board & Staff	Currently very flexible. Could review for changes but has not been an issue. Reuse is challenging when City abandons use
67	<b>Ch1-C.2.3.b</b>	Public works – revise standards for private roads		Planning Board & Staff	Currently match public road standards. Controversial in past discussions and developments. Should make policy clear and if it is approved as private, it shall remain private. Current Council has made thoughtful and financially responsible decisions on this.
68	<b>Ch1-D.1.1.f</b>	Historic – create site design standards for non-historic buildings in or adjacent to the historic district		Planning Board & Staff	
69	<b>Ch1-E.1.4.a</b>	Recreation/Open Space – review recreation and open standards for residential developments		Planning Board & Staff	
70	<b>Ch1-G.1.1.a</b>	Transportation – require applicants to consider transportation demand management		Planning Board & Staff	Ordinance Update needed after options are available. Park and Rides.
71	<b>Ch1-G.1.1.b</b>	Transportation – require new developments with a large number of employees to provide facilities for transportation demand management where feasible		Planning Board & Staff	Development Review.
72	<b>Ch1-G.2.1.b &amp; Ch1-G.2.2.b &amp; Ch1-G.2.3.e &amp; Ch1-G.2.4.b</b>	Transportation – revise access management provisions along major roads		Planning Board & Staff	Should update Access Management Standards.
73	<b>Ch1-G.2.9.e</b>	Transportation – allow use of creative parking solutions in downtown neighborhoods		Planning Board & Staff	Parking within 500-1000 feet allowed. Angled parking on Main Street and Pleasant added capacity.
74	<b>Ch1-G.2.10.a &amp; Ch1-G.2.10.b &amp; H.2.5.c</b>	Transportation – update public and private road standards		Planning Board & Staff	Currently match public road standards. Controversial in past discussions and developments. Should make policy clear and if it is approved as private, it shall remain private. Current Council has made thoughtful and financially responsible decisions on this.
75	<b>Ch1-H.2.1.b</b>	Housing – adopt multifamily property maintenance code		Planning Board & Staff	Discussion started 2012. Will be discussed further in 2013.
76	<b>Ch1-H.2.2.a &amp; Ch1-H.2.3.a &amp; Ch1-H.2.4.a &amp; Ch2-FLUP</b>	Housing – assure that codes allow owners to improve properties in older neighborhoods		Planning Board & Staff	International Existing Building Code Adopted - Not as flexible as we had hoped - limited applications. State mandated and cannot be amended at local level. Reduced setbacks for small intown lots.

77	<b>Ch1-H.2.5.a &amp; Ch2-FLUP</b>	Housing – revise requirements to allow development of a wide-range of housing outside of the built-up area		Planning Board & Staff	PUD Ordinance and flexible 2-Family allowances.
78	<b>Ch1-H.2.5.b</b>	Housing – revise provisions for mobile home parks		Planning Board & Staff	
79	<b>Ch1-I.1.1.a &amp; Ch2-FLUP</b>	Economic development – establish Traditional Downtown Business District		Planning Board & Staff	New Auburn Land Use and Transportation Study.
80	<b>Ch1-I.1.1.b &amp; Ch2-FLUP</b>	Economic development – maintain the Great Falls District		Planning Board & Staff	Ongoing.
81	<b>Ch1-I.2.3.b &amp; Ch2-FLUP</b>	Economic development – use Ag/Rural designation to reserve areas for future commercial/industrial development		Planning Board & Staff	In Progress. EX. Broad Street/Witham area. Some zoning changes needed on this front.
82	<b>Ch1-I.2.3.c</b>	Economic development – provide for the creative reuse of land/buildings in commercial/industrial centers		Planning Board & Staff	Examples: TD Bank in Mall, Industrial Agriculture, flexible use standards in commercial zones.
83	<b>Ch2-FLUP</b>	Land Use – revise the zoning ordinance and districts in accordance with the Future Land Use Plan		Planning Board & Staff	Ongoing. Examples S. Witham Road Zoning Map, Blanchard Road Zoning Map, Shoreland zoning update, Accessory Structures/windmills in GB zoning, Slaughter Houses in AG/RP, Residential Accessory Structures, Composting Facilities in AG/RP zone, Center, Dartmouth Blackmer, Alpha Streets Zoning Map, 314 Center Street Zoning Map, Chickens in Residential zones, Hotels in ID zone, Recreational PUD Considered but tabled, Constellation Drive Zoning Map.
84	<b>Ch1-B.1.1.d</b>	Water supply – update LAO requirements		Planning Board & Staff & LAWPC	In the works. Suggest holding till results of Lake Auburn Diagnostic Study presented on Feb 13
85	<b>Ch1-A.1.2.h</b>	Lake Auburn – require septic inspection/repair upon property transfer		Planning Board & Staff & LAWPC	AWD note- system already exists in some ocean communities with sensitive, productive clam flats. AWD/LAWPC to support city staff.
86	<b>Ch1-B.1.1.c</b>	Water supply – update stormwater management requirements including Phosphorous Control Ordinance		Planning Board & Staff & LAWPC	In the works. LAWPC has recommendation from 2010 Lake Auburn Watershed Management Plan to do so.
87	<b>Ch1-G.2.9.e</b>	Transportation – allow use of creative parking solutions in downtown neighborhoods		Planning Board & Staff	Parking within 500-1000 feet allowed. Angled parking on Main Street and Pleasant added capacity.
88	<b>Ch1-G.2.10.a &amp; Ch1-G.2.10.b &amp; H.2.5.c</b>	Transportation – update public and private road standards		Planning Board & Staff	Currently match public road standards. Controversial in past discussions and developments. Should make policy clear and if it is approved as private, it shall remain private.
89	<b>Ch1-H.2.1.b</b>	Housing – adopt multifamily property maintenance code		Planning Board & Staff	Discussion started 2012. Will be discussed further in 2013.
90	<b>Ch1-H.2.1.b</b>	Housing – adopt renovation code and revise fire code		Planning and Permitting Department	International Existing Building Code Adopted - Not as flexible as we had hoped - limited applications. State mandated and cannot be amended at local level.
91	<b>Ch1-H.2.2.a &amp;</b>				
92	<b>Ch1-H.2.3.a &amp;</b>				
93	<b>Ch1-H.2.4.a &amp; Ch2-FLUP</b>	Housing – assure that codes allow owners to improve properties in older neighborhoods		Planning Board & Staff	Flexible setbacks on small lots -should consider front setback changes and others in high density areas to preserve and add to density where desired.
94	<b>Ch1-H.2.5.a &amp;</b>	Housing – revise requirements to allow development of a wide-range of housing outside of the built-up area		Planning Board & Staff	
95	<b>Ch2-FLUP</b>				
96	<b>Ch1-H.2.5.b</b>	Housing – revise provisions for mobile home		Planning Board &	
97	<b>Ch1-I.1.1.a &amp;</b>	Economic development – establish Traditional Downtown Business District		Planning Board & Staff	
98	<b>Ch2-FLUP</b>				Coming in 2013
99	<b>Ch1-I.1.1.b &amp;</b>	Economic development – maintain the Great Falls District		Planning Board & Staff	
100	<b>Ch2-FLUP</b>				
101	<b>Ch1-I.2.3.b &amp; Ch2-FLUP</b>	designation to reserve areas for future commercial/industrial development		Planning Board & Staff	Ongoing.
102	<b>Ch1-I.2.3.c</b>	Economic development – provide for the creative reuse of land/buildings in commercial/industrial centers		Planning Board & Staff	Ongoing.

103	<b>Ch2-FLUP</b>	Land Use – revise the zoning ordinance and districts in accordance with the Future Land Use Plan		Planning Board & Staff	Ongoing. Examples S. Witham Road Zoning Map , Blanchard Road Zoning Map, Shoreland zoning update, Accessory Structures/windmills in GB zoning, Slaughter Houses in AG/RP, Residential Accessory Structures, Composting Facilities in AG/RP zone, Center, Dartmouth Blackmer, Alpha Streets Zoning Map, 314 Center Street Zoning Map, Chickens in Residential zones, Hotels in ID zone, Recreational PUD Considered but tabled, Constellation Drive Zoning Map. Some done.
<b>Studies and Planning (Short Term)</b>					
104	<b>Ch1-B.1.2.b</b>	Water supply – develop water conservation plan		Auburn Water District	Guidelines exist for production/consumption. AWD has 6 million gallon per day (MGD) production capacity, 2012 only ran about 2.5 to 3.0 MGD
105	<b>Ch1-C.1.1.a &amp; Ch3-A.1.a</b>	Emergency services – conduct feasibility study of public safety services and facilities including regional considerations		City Manager & Council	
106	<b>Ch1-H.2.6.d &amp; Ch3-A.3.a</b>	Housing – establish a housing advocacy committee		City Manager & Council	
107	<b>Ch1-C.2.3.d</b>	Public works – undertake comprehensive review of pedestrian access		Community Services Department	The City is currently working with ATRC's Bike and Pedestrian Committee to update the long range facilities plan, Bridging the Gaps
108	<b>Ch1-I.2.4.a &amp; Ch3-D.2</b>	Economic development – develop a labor-to-business marketing plan		Economic Development Department	Should be School Dept.
109	<b>Ch1-I.2.4.b</b>	Economic development – develop a skilled labor force education plan		Economic Development Department & Community Development Department	Library has some programs and School Dept. is better suited. Consider changing responsible party.
110	<b>Ch1-G.2.11.a &amp; Ch3-B.1.b</b>	Transportation – undertake comprehensive review of pedestrian and bicycle access including regional considerations		Planning and Permitting Department & Community Services Department	The City is currently working with ATRC's Bike and Pedestrian Committee to update the long range facilities plan, Bridging the Gaps.
111	<b>Ch1-G.2.11.c</b>	Transportation – establish neighborhood bike routes		Planning and Permitting Department & Community Services Department	As City reconstruction projects take place each area is reviewed to incorporate the appropriate sidewalks and bicycle facilities.
112	<b>Ch1-C.3.1.b</b>	Schools – develop a child-centered facility plan		School Superintendent	
<b>Capital Projects and Investments (Short Term)</b>					
113	<b>Ch1-B.2.3.b</b>	Sewers – eliminate inflow/infiltration contributions of natural water		Auburn Sewerage District	City/ASD in 14th year of 15 year CSO elimination plan. ASD hired consultant to conduct Inflow/Infiltration assessment in 2012 (smoke testingZ). Identified "defects" subject to capital improvements plan in 2013 and beyond.
114	<b>Ch1-A.1.1.b &amp; Ch1-E.1.3.a</b>	Lake Auburn – continue capital improvements		Auburn Water District (AWD)	On-going. Waiting on recommendations of lake Auburn Diagnostic Study. Initial presentation Feb 13.
115	<b>Ch1-B.1.2.c</b>	Water supply – assure that system can provide adequate supplies of “process water”		AWD	AWD has rated capacity of 6 million gallons per day (MGD). In 2012 AWD supplied only 2.5 to 3.0 MGD. City could double water demand. AWD infrastructure can handle 1.0 ZMGD increase around airport, industrial park, turnpike exit.
116	<b>Ch1-A.6.1.a &amp; Ch1-B.2.2.a</b>	Stormwater & sewers – fund and implement CSO removal projects		City Manager & Council	ASD Note: CSO separation is theoretically complete. Still investigating for isolated areas that may require construction. <u>Remaining problem area-</u> private roof drains and sump pumps.
117	<b>Ch1-B.2.1.a</b>	Sewers – use TIFs and other funding to extend sewer system		City Manager & Council	ASD could provide engineering & technical guidance, as necessary.
118	<b>Ch1-B.2.3.a</b>	Sewers – support CSO		City Manager &	ASD is working to identify remaining CSO issues. May
119	<b>Ch1-E.1.3.b</b>	Recreation – continue to provide public access to Taylor Pond		City Manager & Council	
120	<b>Ch1-I.2.2.b</b>	Economic development – ensure the capacity of utility services and expand as necessary		City Manager & Council	Auburn Industrial Park. More in the future with TIF Discussions.
121	<b>Ch1-G.2.2.a</b>	Transportation – improve Minot Ave. traffic management		Community Services Department	Maine DOT completed improvements to the Minot Ave/Hotel Road Intersection and the Minot Ave. Rotary in 2012.
122	<b>Ch1-G.2.2.c</b>	Transportation – improve Minot Ave. rotary		Community Services Department	Maine DOT completed improvements to the Minot Ave. Rotary in 2012.
123	<b>Ch1-G.2.8.a</b>	Transportation – install traffic directional signage		Community Services Department	Maine DOT will be installing overhead directional signage at the Minot Ave. Rotary prior to June 2013.
124	<b>Ch1-G.2.9.b</b>	Transportation – extend Main Street streetscape improvements		Community Services Department	Streetscape improvements have been extended to the bridge over the Little Androscoggin.

125	<b>Ch1-G.2.12.b</b>	Transportation – install traffic signage to discourage use of local streets by through traffic		Community Services Department	Signs continue to be installed when requested and approved by the police department.
126	<b>Ch1-G.3.1.a</b>	Transportation – promote rail industry growth		Community Services Department	
127	<b>Ch1-G.2.1.a</b>	Transportation – improve Center Street/Turner Road traffic management		Community Services Department & AVCOG	The City is currently working with MDOT and neighborhood groups to have improvements constructed.
128	<b>Ch1-A.1.1.c &amp; Ch1-E.1.3.a</b>	Lake Auburn – develop recreational opportunities		Lake Auburn Watershed Protection Commission (LAWPC)	LAWPC is exploring options/funding. LAWPC funded 2007 Lake Auburn Bike and Pedestrian Plan- Southern Link. New Education & Outreach Manager will explore further opportunities-interactive school trips.
129	<b>Ch1-E.1.1.a</b>	Recreation – fund improvement of existing park and recreation facilities		Recreation Director	Study under way.
130	<b>Ch1-E.1.2.d</b>	Recreation – improve existing access points to rivers		Recreation Director	Grant Applications pending for Greenway access in New Auburn.
131	<b>Ch1-C.3.1.a</b>	Schools – provide suitable high school facility		School Superintendent	HS Committee working on plans.
<b>Other Actions (Short Term)</b>					
132	<b>Ch1-A.1.2.f</b>	Lake Auburn – designate “Responsible Management Entity” for septic system maintenance		City Manager & Council	LAWPC could provide assistance for tracking or monitoring activity.
133	<b>Ch1-C.4.1.a</b>	Municipal services – hire a grants coordinator		City Manager & Council	
134	<b>Ch1-I.1.1.c</b>	Economic development – implement the ADAPT Plan and include New Auburn in Downtown TIF District		City Manager & Council	In the works for 2013 discussion.
135	<b>Ch1-H.1.2.c</b>	Community development – manage “cut through” traffic in residential neighborhoods		Community Services Department & Police Department	Signs continue to be installed when requested and approved by the police department.
136	<b>Ch1-C.5.1.a</b>	Emergency management – identify facilities that can be used as emergency housing		Director of Emergency Management	
137	<b>Ch1-C.5.2.a &amp; Ch3-A.1.b</b>	Emergency management – address large-scale emergency response needs		Director of Emergency Management	
138	<b>Ch1-A.1.2.g &amp; Ch1-A.1.4.f</b>	Lake Auburn – establish an owner/resident educational program		LAWPC	On-going. LAWPC hired new Education & Outreach manager in January to begin implementation.
139	<b>Ch1-E.1.2.a</b>	Recreation – develop riverfront access campaign		Parks & Recreation Department	
140	<b>Ch1-E.1.2.b &amp; Ch3-B.1.a</b>	Recreation – connect recreational facilities along river to facilities in other communities		Parks & Recreation Department & Conservation Organizations & City Council	Ongoing Planning. Current focus on developing connections within Auburn.
141	<b>Ch1-I.1.1.d</b>	Economic development – promote downtown Auburn and New Auburn as business locations		Planning and Permitting Department & Economic Development Department	New Auburn Transportation and Land Use study RFP out to bid in February 2013.
142	<b>Ch1-E.1.4.b</b>	Recreation – coordinate efforts to provide network of publicly accessible open space		Planning and Permitting Department & LAWPC	
143	<b>Ch1-A.2.1.a &amp; Ch1-A.2.2.f</b>	Taylor Pond – establish a property owner information program		Planning and Permitting Department & Taylor Pond Association	Participate in Taylor Pond Annual meetings and newsletters.
144	<b>Ch1-C.1.2.c &amp; Ch1-C.2.1.b</b>	Emergency services & public works – use alternative fuels in emergency service vehicles where feasible		Police & Fire Chiefs	

145	<b>Ch1-C.2.2.b</b>	Public works – conduct citywide recycling campaign		Public Works Department	The Public Works Department is waiting on direction from the City Council if we should remain on single stream recycling. In Oct/Nov 2011 the City Council was presented with management's recommendation to move to single stream and this was opposed by the recycling committee. The Council requested presentations from MMWAC and other interested organizations before they made a final decision.
146	<b>Ch1-F.1.1.a</b>	Schools – improve the quality of the City's school system		School Committee	
147	<b>Ch1-A.2.1.b</b>	Taylor Pond – control invasive species		To Be Determined	Access is limited. State Law requires boats to be cleaned. Pike are in Taylor pond as an invasive.
	<b>Policy Reference</b>	<b>Activity</b>		<b>Primary Responsibility</b>	
	<b>Longer Term Activities</b>				
	<b>Land Use Ordinance Amendments (Longer Term)</b>				
148	<b>Ch1-A.7.1.b</b>	Aquifer protection – map and protect significant aquifers		Planning Board & Staff	
149	<b>Ch1-A.8.1.b</b>	Wetlands – develop flexible wetland standards for urban areas		Planning Board & Staff	State limitations will need to be explored.
150	<b>Ch1-A.9.1.g</b>	Habitat – protect identified deer wintering areas		Planning Board & Staff	Shoreland zoning accomplished much of this. State mapping in progress.
151	<b>Ch1-D.1.1.c</b>	Historic – incorporate Historic Resources List and Map into Zoning Ordinance		Planning Board & Staff	
152	<b>Ch1-D.1.1.d &amp; Ch1-D.1.1.e</b>	Historic – update historic resource standards and submission requirements		Planning Board & Staff	
154	<b>Ch1-D.1.3.b &amp; Ch1-D.1.3.c</b>	Archeological – update archeological resource standards and submission		Planning Board & Staff	
155					
	<b>Studies and Planning (Longer Term)</b>				
156	<b>Ch1-G.2.5.a &amp; Ch3-C.1</b>	Transportation – pursue the construction of a new Turnpike interchange		City Manager & Council	Not likely in short term.
157	<b>Ch1-G.2.5.b</b>	Transportation – study the viability and feasibility of New Auburn connector		Community Services Department	
158	<b>Ch1-G.2.7.b</b>	Transportation – study impacts of increased traffic from western communities		Community Services Department	Rt 4 Corridor study desired if funding is made available through legislative process.
159	<b>Ch1-G.2.9.d</b>	Transportation – study feasibility of Downtown New Auburn one-way loop		Community Services Department	The City in partnership with ATRC will be issuing an RFP for a New Auburn Village Center Study in 2/2013.
160	<b>Ch1-G.3.1.b</b>	Transportation – support study of realigning the Exit 75 interchange		Community Services Department	
161	<b>Ch1-G.2.3.a</b>	Transportation – assess improvements to the Washington-Southbound/Rodman intersection		Community Services Department & AVCOG	
162	<b>Ch1-D.1.1.a</b>	Historic – identify, survey, and map additional significant historic resources		Planning and Permitting Department	We have downtown maps but other areas are not mapped.
163	<b>Ch1-D.1.1.b</b>	Historic – develop City Historic Resources List		Planning and Permitting Department	
164	<b>Ch1-D.1.3.a</b>	Archeological – develop City Archeological Resource List		Planning and Permitting Department	
165	<b>Ch1-G.1.2.a</b>	Transportation – develop program to work with large employers to explore transportation demand management		Planning and Permitting Department	
166	<b>Ch1-G.2.4.a</b>	Transportation – develop standards for appropriate development along Riverside Drive		Planning and Permitting Department	
167	<b>Ch1-H.1.1.a &amp; Ch1-H.1.1.b</b>	Community development – support development of neighborhood plans and their adoption as part of the Comprehensive Plan		Planning and Permitting Department	

168	<b>Ch1-H.2.2.b</b>	Housing – develop program to allow transition of urban single family neighborhoods	Planning and Permitting Department		
169	<b>Ch1-G.3.2.a &amp; Ch3-C.2</b>	Transportation – study the establishment of passenger air and rail service at the Intermodal facility	Planning and Permitting Department & Economic		
170	<b>Ch1-G.3.2.a &amp; Ch3-C.2</b>	Transportation – assess the potential for expansion of passenger rail service	Planning and Permitting Department & Economic		
171	<b>Ch1-G.2.3.b</b>	streetscape and site design criteria for the major road	Permitting Department &		
172	<b>Ch1-A.6.1.c</b>	Stormwater – develop watershed management plans for impaired water bodies	Planning Board & Staff		
173	<b>Ch1-A.8.1.d</b>	Wetlands – explore creation of wetlands mitigation program	Planning Board & Staff		
174	<b>Ch1-A.1.9.b</b>	Habitat – identify and protect unfragmented habitat blocks and wildlife corridors	Planning Board & Staff		State Mapping received from IF&W December 2012
175	<b>Ch1-C.1.2.d</b>	Emergency services – assess providing contract police services to other communities	Police Chief		
176	<b>Ch1-C.2.2.a</b>	Public works – assess potential recycling programs	Public Works Department		The Public Works Department is waiting on direction from the City Council if we should remain on single stream recycling. In Oct/Nov 2011 the City Council was presented with management's recommendation to move to single stream and this was opposed by the recycling committee. The Council requested presentations from MMWAC and other interested organizations before they made a final decision.
177	<b>Ch1-E.1.1.b</b>	Recreation – assess viability of developing a consolidated sports field complex	Recreation Director		
<b>Capital Projects and Investments (Longer Term)</b>					
178	<b>Ch1-B.2.2.c</b>	Sewers – upgrade older central sewer lines	Auburn Sewerage District		on-going as part of CSO elimination program. ASD evaluating replacement vs. relining, or in place rehabilitation. ASD buying sewer inspection camera in 2013
179	<b>Ch1-B.2.3.c</b>	Sewers – use cost-effective technology and treatment processes at LAWPCA	Auburn Sewerage District		New anaerobic digester facility is expected to come on line in April/May 2013. Will be first of its kind in Maine for municipal wastewater treatment. Will produce power from methane gas to help control long-term operational costs.
180	<b>Ch1-B.2.1.b</b>	Sewers – use bonding or other strategies to extend sewers to New Auburn industrial areas	City Manager & Council		ASD note- can provide engineering guidance or technical support to ensure logical expansion of system.
181	<b>Ch1-I.1.1.e</b>	Economic development – implement the New Auburn Village Center concept	City Manager & Council & Economic Development Department		The City in partnership with ATRC will be issuing an RFP for a New Auburn Village Center Study in 2/2013.
182	<b>Ch1-G.2.1.c</b>	Transportation – improve pedestrian and bicycle access along the Route 4 corridor	Community Services Department		Widened shoulders are being installed on Turner Street so that it may be used as a bypass for bicyclists in order to avoid Route 4.
183	<b>Ch1-G.2.6.a</b>	Transportation – improve Turner Street from Mt. Auburn Avenue to Center Street	Community Services Department		The City is currently reconstructing Turner Street with a completion date for construction in 2013.
184	<b>Ch1-G.2.6.b</b>	Transportation – improve Turner Street between Union Street and Mt. Auburn Avenue	Community Services Department		Turner Street was paved in 2009 and sidewalk improvements are scheduled for the summer of 2013.
185	<b>Ch1-G.2.9.a</b>	Transportation – establish Elm Street as primary route between Main Street and Minot Avenue	Community Services Department		
186	<b>Ch1-G.2.9.c</b>	Transportation – redesign the Pleasant Street/Turner Street connection	Community Services Department		
187	<b>Ch1-G.2.11.b</b>	Transportation – require sidewalks in designated growth areas	Community Services Department		



188	<b>Ch1-G.2.11.d</b>	Transportation – provide paved shoulders for pedestrians and bicyclists outside of growth areas	Community Services Department		As the City undergoes construction projects each area is reviewed to determine if paved shoulders are needed and where needed, are constructed.
189	<b>Ch1-G.3.1.c</b>	Transportation – implement the 2006 Airport Master Plan Update	Community Services Department		
190	<b>Ch1-G.3.2.c &amp; Ch3-C.3</b>	Transportation – expand fixed-route bus service and other transit service as necessary	Community Services Department & ARTC		
191	<b>Ch1-E.1.2.c</b>	Recreation – develop additional public access points along the rivers	Parks & Recreation Department		Ongoing. New Auburn Connector Trail and Boat Launch Discussions with Next Era Energy.
192	<b>Ch1-G.2.9.e</b>	Transportation – support creative parking solutions for downtown neighborhoods	Planning and Permitting Department		Pleasant and Main Street angled parking, Other parking lots for winter relief.
193	<b>Ch1-G.2.9.f</b>	Transportation – develop greenbelt between Pettengill park and West Pitch Park	Planning and Permitting Department		
194	<b>Ch1-G.2.9.g</b>	Transportation – develop greenbelt from West Pitch Park to New Auburn	Planning and Permitting Department		
195	<b>Ch1-C.2.1.a</b>	Public works – develop southern staging area	Public Works Department		
<b>Other Actions (Longer Term)</b>					
196	<b>Ch1-D.1.2.d</b>	Historic – incorporate City Historic Resources List into assessing data base	Assessor		
197	<b>Ch1-E.1.6.b</b>	Cultural – develop marketing program for local cultural amenities	Chamber of Commerce		
198	<b>Ch1-F.1.1.b</b>	Population – market Auburn as a desirable place to live	Chamber of Commerce		
199	<b>Ch1-G.2.7.a</b>	Transportation – establish western connector route	Community Services Department		Rt4 Study being proposed to MTA and Legislators late 2012 and early 2013.
200	<b>Ch1-G.2.12.a</b>	Transportation – discourage through traffic on local streets when they are improved or reconstructed	Community Services Department		Signs continue to be installed when requested and approved by the police department.
201	<b>Ch1-A.9.1.e</b>	Habitat – establish voluntary protection-advisory program	Conservation Commission & ALT & Conservation Organizations		Note- Please consider as an interested party
202	<b>Ch1-A.9.1.f</b>	Habitat – create a wildlife corridor improvement program	Conservation Commission & ALT & Conservation Organizations		Note- Please consider as an interested party
203	<b>Ch1-E.1.4.c</b>	Recreation – develop program to connect urban residents with rural recreation	Park & Recreation Department		
204	<b>Ch1-E.1.5.b</b>	Recreation – develop trail maintenance program for City-owned trails	Parks & Recreation Department & ALT & Conservation Organizations		Note- LAWPC might want to partner/adopt City's program for LAWPC trails.
205	<b>Ch1-A.3.1.e</b>	Androscoggin River – develop land/trail management plans	Planning and Permitting Department		
206	<b>Ch1-A.9.1.d</b>	Habitat – require documentation of forestry practices	Planning and Permitting Department		Note- Please consider LAWPC as an interested party for land within Lake Auburn Overlay Distinct
207	<b>Ch1-A.9.1.c</b>	Habitat – establish community education program	Planning and Permitting Department & Auburn Public Library		Note- LAWPC might be able to provide assistance w/ new Education & Outreach manager.

Policy Reference	Activity	Primary Responsibility
<b>Ongoing Activities</b>		
Ch1-A.1.1.a	Lake Auburn - control invasive species	Lake Auburn Watershed Protection Commission (LAWPC)
Ch1-A.1.1.d	Lake Auburn – improve erosion control	LAWPC
Ch1-A.1.2.a & Ch1-A.1.4.a	Lake Auburn – minimize pollution from changes to existing development	Planning and Permitting Department & LAWPC
Ch1-A.1.2.b	Lake Auburn – provide financial assistance for septic replacement	Community Development Department
Ch1-A.1.3.a	Lake Auburn – continue land purchase/conservation	LAWPC
Ch1-A.1.3.b	Lake Auburn – establish City land conservation priority	City Council & LAWPC
Ch1-A.1.4.b & Ch3-A.6	Lake Auburn – promote watershed management outside of Auburn	LAWPC
Ch1-A.1.5.a	Lake Auburn – monitor water quality	Auburn Water District (AWD) & LAWPC
Ch1-A.1.5.b	Lake Auburn – monitor statewide trends in watershed protection	LAWPC
Ch1-B.1.1a	Water supply – protect Lake Auburn water quality	AWD & LAWPC
Ch1-A.3.1.a & Ch1-A.3.2.a	Rivers – protect/improve water quality	Planning and Permitting Department & Community Services Department
Ch1-A.3.1.b & Ch1-A.3.2.c	Rivers – support land conservation	City Council & Conservation Organizations
Ch1-A.3.1.c & Ch1-A.3.2.d	Rivers – improve and restore fish populations	City Council & MDIF&W
Ch1-A.5.1.d	Floodplains – review and update floodplain maps	Planning Board & Staff & FEMA
Ch1-A.6.1.a	Stormwater – conform to Phase II federal requirements	Community Services Department
Ch1-A.7.1.a	Aquifer protection – maintain limits on mining around Townsend Brook	Planning Board & Staff
Ch1-B.1.2.a	Water supply – require applicants to document sufficient water supply	Planning Board & Staff
Ch1-B.2.1.c & Ch1-I.2.2.a & Ch2-FLUP	Sewers – work with property owners and developers to upgrade sewers to serve Growth Areas (see FLUP)	City Manager & Council & Economic Development Department
Ch1-C.1.2.a & Ch3-A.1.a	Emergency services – support joint local and regional police and fire	City Manager & Council
Ch1-C.1.2.b	Emergency services – develop police volunteer program	Police Chief
Ch1-C.1.2.e	Emergency services – provide police and fire services to airport and Intermodal facility to meet Homeland Security requirements	Police & Fire Chiefs
Ch1-C.2.3.a & Ch1-2.10.c	Public works/transportation – limit the need for new roads	Planning Board & Staff
Ch1-C.2.3.c	Public works – upgrade aging roadways using most durable materials	Public Works Director
Ch1-C.4.1.b & Ch3-A.2	Municipal services – expand joint services	City Manager & Council
Ch1-D.1.2.a	Historic – provide information to owners of historic properties	Planning and Permitting Department
Ch1-D.1.2.b	Historic – provide information on historic properties and programs to real estate agents	Planning and Permitting Department
Ch1-E.1.4.d	Open Space – support participation in current use assessment programs	Planning and Permitting Department
Ch1-E.1.5.a	Recreation – support network of trails in rural areas	Parks & Recreation Department & Snowmobile Clubs
Ch1-E.1.6.a &	Cultural – collaborate with Lewiston	

Ch3-B.2	and the region on cultural venues and	City Manager & Council	
Ch1-F.1.2.a	Population – continue to provide a range of housing opportunities	City Manager	
Ch1-G.2.8.b	Transportation – enforce truck route designations	Police Department	
Ch1-G.2.12.c	Transportation – make enforcement of speed limits a priority	Police Department	
Ch1-G.3.2.d	Transportation – participate in regional commuter transit programs	City Manager & ATRC/AVCOG	
Ch1-H.1.2.a	Community development – assure that City services are provided equitably	City Manager	
Ch1-H.1.2.b	Community development – provide adequate neighborhood and city-wide school facilities	School Committee & Superintendent	
Ch1-H.1.2.d	Community development – encourage neighborhoods to work with City departments	City Manager & Council	
Ch1-H.2.1.a	Housing – maintain the quality of older owner-occupied housing	Community Development Department	
Ch1-H.2.1.b	Housing – maintain the rental housing stock	Community Development Department	
Ch1-H.2.6.a	Housing – develop continuum of housing for homeless and people with special needs	Community Development Department	
Ch1-H.2.6.b & Ch1-H.2.6.c	Housing – support development of subsidized and affordable housing	City Manager & Council	
Ch1-H.2.6.e	Housing – purchase and invest in foreclosed properties	Community Development Department	
Ch1-I.2.1.a & Ch3-D.1	Economic development – promote the L/A brand through regional economic	City Manager & Council & LAEGC	
Ch1-I.2.3.a	Economic development – use TIFs and financial incentives to attract investments	City Manager & Council	
Ch1-I.2.4.c	Economic development – assure that there are adequate re-training programs for adults	City Manager & School Superintendent	
Ch3-A.3.b	Regional housing – support implementation of regional homeless plan (LAASH)	Community Development Department	
Ch3-A.4	Regional sewerage – continue to work to treat sewage on a regional basis	Auburn Sewerage District	
Ch3-A.5	Regional water supply – continue to work to provide public water on a regional basis	Auburn Water District	

Policy Reference	Activity	Primary Responsibility
<b>Short Term Activities</b>		
<b>Land Use Ordinance Amendments (Short Term)</b>		
Ch1-A.1.2.c & Ch1-A.1.4.c	Lake Auburn – review/revise LAO District septic requirements	Planning Board & LAWPC
Ch1-B.1.1.d	Water supply – update LAO requirements	Planning Board & Staff & LAWPC
Ch1-A.1.2.d & Ch1-A.1.4.d & Ch1-A.2.1.c & Ch1-A.2.2.b	Lake Auburn and Taylor Pond – adopt LID standards for changes to existing development and new development	Planning Board & Staff
Ch1-A.1.2.e & Ch1-A.1.4.e & Ch1-A.2.2.c	Lake Auburn and Taylor Pond – update Phosphorous Control Ordinance	Planning Board & Staff
Ch1-A.1.2.h	Lake Auburn – require septic inspection/repair upon property transfer	Planning Board & Staff & LAWPC
Ch1-A.1.3.c & Ch1-A.2.2.a & Ch2-FLUP	Lake Auburn and Taylor Pond – maintain Ag/Rural zoning in watersheds	Planning Board & Staff
Ch1-A.2.1.d & Ch1-A.2.2.e	Taylor Pond – revise sewer connection requirements	Planning Board & Staff
Ch1-A.2.2.d	Taylor Pond – expand wetlands protection	Planning Board & Staff
Ch1-A.3.1.f & Ch2-FLUP	Androscooggin River – maintain Ag/Rural zoning in undeveloped portions of watershed	Planning Board & Staff
Ch1-A.3.2.b & Ch2-FLUP	Little Androscooggin River – include undeveloped floodplains in RP District	Planning Board & Staff
Ch1-A.4.1.a	Streams – include significant streams in Shoreland Overlay District/Stream Protection	Planning Board & Staff
Ch1-A.5.1.a & Ch1-A.5.1.b	Floodplains – maintain/update floodplain management requirements	Planning Board & Staff
Ch1-A.5.1.c	Floodplains – prohibit filling in mapped floodways	Planning Board & Staff
Ch1-A.7.1.c	Aquifer protection – require applicants for development review to provide information on	Planning Board & Staff
Ch1-A.8.1.a	Wetlands – update development review standards for wetlands	Planning Board & Staff
Ch1-A.8.1.c & Ch1-A.9.1.a	Wetlands – update Shoreland Zoning requirements with respect to state identified wetlands and significant habitats	Planning Board & Staff
Ch1-A.9.1.h	Habitat – create incentives for the use of cluster/conservation development	Planning Board & Staff
Ch1-B.1.1.b	Water supply – regulate the impact of development on groundwater	Planning Board & Staff
Ch1-B.1.1.c	Water supply – update stormwater management requirements including Phosphorous	Planning Board & Staff & LAWPC
Ch1-C.2.1.c & Ch2-FLUP	Public facilities – update treatment of municipal facilities in zoning districts	Planning Board & Staff
Ch1-C.2.3.b	Public works – revise standards for private roads	Planning Board & Staff
Ch1-D.1.1.f	Historic – create site design standards for non-historic buildings in or adjacent to the	Planning Board & Staff
Ch1-D.1.2.c	Historic – adopt a renovation code as part of the building code (see CH1-H.2.1.b)	Planning and Permitting Department & Community Development Department
Ch1-E.1.4.a	Recreation/Open Space – review recreation and open standards for residential	Planning Board & Staff
Ch1-G.1.1.a	Transportation – require applicants to consider transportation demand management	Planning Board & Staff
Ch1-G.1.1.b	Transportation – require new developments with a large number of employees to provide	Planning Board & Staff
Ch1-G.2.1.b & Ch1-G.2.2.b & Ch1-G.2.3.e & Ch1-G.2.4.b	Transportation – revise access management provisions along major roads	Planning Board & Staff
Ch1-G.2.9.e	Transportation – allow use of creative parking solutions in downtown neighborhoods	Planning Board & Staff
Ch1-G.2.10.a & Ch1-G.2.10.b & H.2.5.c	Transportation – update public and private road standards	Planning Board & Staff
Ch1-H.2.1.b	Housing – adopt multifamily property maintenance code	Planning Board & Staff
Ch1-H.2.1.b	Housing – adopt renovation code and revise fire code	Planning and Permitting Department
Ch1-H.2.2.a & Ch1-H.2.3.a & Ch1-H.2.4.a & Ch2-FLUP	Housing – assure that codes allow owners to improve properties in older neighborhoods	Planning Board & Staff
Ch1-H.2.5.a & Ch2-FLUP	Housing – revise requirements to allow development of a wide-range of housing outside of the built-up area	Planning Board & Staff
Ch1-H.2.5.b	Housing – revise provisions for mobile home parks	Planning Board & Staff
Ch1-I.1.1.a & Ch2-FLUP	Economic development – establish Traditional Downtown Business District	Planning Board & Staff
Ch1-I.1.1.b & Ch2-FLUP	Economic development – maintain the Great Falls District	Planning Board & Staff
Ch1-I.2.3.b & Ch2-FLUP	Economic development – use Ag/Rural designation to reserve areas for future commercial/industrial development	Planning Board & Staff
Ch1-I.2.3.c	Economic development – provide for the creative reuse of land/buildings in	Planning Board & Staff
Ch2-FLUP	Land Use – revise the zoning ordinance and districts in accordance with the Future Land	Planning Board & Staff

<b>Studies and Planning (Short Term)</b>		
Ch1-B.1.2.b	Water supply – develop water conservation plan	Auburn Water District
Ch1-C.1.1.a & Ch3-A.1.a	Emergency services – conduct feasibility study of public safety services and facilities including regional considerations	City Manager & Council
Ch1-C.2.3.d	Public works – undertake comprehensive review of pedestrian access	Community Services Department
Ch1-C.3.1.b	Schools – develop a child-centered facility plan	School Superintendent
Ch1-G.2.11.a & Ch3-B.1.b	Transportation – undertake comprehensive review of pedestrian and bicycle access including regional considerations	Planning and Permitting Department & Community Services Department
Ch1-G.2.11.c	Transportation – establish neighborhood bike routes	Planning and Permitting Department & Community Services Department
Ch1-H.2.6.d & Ch3-A.3.a	Housing – establish a housing advocacy committee	City Manager & Council
Ch1-I.2.4.a & Ch3-D.2	Economic development – develop a labor-to-business marketing plan	Economic Development Department
Ch1-I.2.4.b	Economic development – develop a skilled labor force education plan	Economic Development Department & Community Development Department
<b>Capital Projects and Investments (Short Term)</b>		
Ch1-A.1.1.b & Ch1-E.1.3.a	Lake Auburn – continue capital improvements	Auburn Water District (AWD)
Ch1-A.1.1.c & Ch1-E.1.3.a	Lake Auburn – develop recreational opportunities	Lake Auburn Watershed Protection Commission (LAWPC)
Ch1-A.6.1.a & Ch1-B.2.2.a	Stormwater & sewers – fund and implement CSO removal projects	City Manager & Council
Ch1-B.1.2.c	Water supply – assure that system can provide adequate supplies of “process water”	AWD
Ch1-B.2.1.a	Sewers – use TIFs and other funding to extend sewer system	City Manager & Council
Ch1-B.2.3.a	Sewers – support CSO Program	City Manager & Council
Ch1-B.2.3.b	Sewers – eliminate inflow/infiltration contributions of natural water	Auburn Sewerage District
Ch1-C.3.1.a	Schools – provide suitable high school facility	School Superintendent
Ch1-E.1.1.a	Recreation – fund improvement of existing park and recreation facilities	Recreation Director
Ch1-E.1.2.d	Recreation – improve existing access points to rivers	Recreation Director
Ch1-E.1.3.b	Recreation – continue to provide public access to Taylor Pond	City Manager & Council
Ch1-G.2.1.a	Transportation – improve Center Street/Turner Road traffic management	Community Services Department & AVCOG
Ch1-G.2.2.a	Transportation – improve Minot Ave. traffic management	Community Services Department
Ch1-G.2.2.c	Transportation – improve Minot Ave. rotary	Community Services Department
Ch1-G.2.8.a	Transportation – install traffic directional signage	Community Services Department
Ch1-G.2.9.b	Transportation – extend Main Street streetscape improvements	Community Services Department
Ch1-G.2.12.b	Transportation – install traffic signage to discourage use of local streets by through traffic	Community Services Department
Ch1-G.3.1.a	Transportation – promote rail industry growth	Community Services Department
Ch1-I.2.2.b	Economic development – ensure the capacity of utility services and expand as necessary	City Manager & Council
<b>Other Actions (Short Term)</b>		
Ch1-A.1.2.f	Lake Auburn – designate “Responsible Management Entity” for septic system maintenance	City Manager & Council
Ch1-A.1.2.g & Ch1-A.1.4.f	Lake Auburn – establish an owner/resident educational program	LAWPC
Ch1-A.2.1.a & Ch1-A.2.2.f	Taylor Pond – establish a property owner information program	Planning and Permitting Department & Taylor Pond Association
Ch1-A.2.1.b	Taylor Pond – control invasive species	To Be Determined
Ch1-C.1.2.c & Ch1-C.2.1.b	Emergency services & public works – use alternative fuels in emergency service vehicles where feasible	Police & Fire Chiefs
Ch1-C.2.2.b	Public works – conduct citywide recycling campaign	Public Works Department
Ch1-C.4.1.a	Municipal services – hire a grants coordinator	City Manager & Council
Ch1-C.5.1.a	Emergency management – identify facilities that can be used as emergency housing	Director of Emergency Management
Ch1-C.5.2.a & Ch3-A.1.b	Emergency management – address large-scale emergency response needs	Director of Emergency Management
Ch1-E.1.2.a	Recreation – develop riverfront access campaign	Parks & Recreation Department
Ch1-E1.2.b & Ch3-B.1.a	Recreation – connect recreational facilities along river to facilities in other communities	Parks & Recreation Department & Conservation Organizations & City Council
Ch1-E.1.4.b	Recreation – coordinate efforts to provide network of publicly accessible open space	Planning and Permitting Department & LAWPC
Ch1-F.1.1.a	Schools – improve the quality of the City’s school system	School Committee
Ch1-H.1.2.c	Community development – manage “cut through” traffic in residential neighborhoods	Community Services Department & Police Department
Ch1-I.1.1.c	Economic development – implement the ADAPT Plan and include New Auburn in	City Manager & Council
Ch1-I.1.1.d	Economic development – promote downtown Auburn and New Auburn as business locations	Planning and Permitting Department & Economic Development Department

Policy Reference	Activity	Primary Responsibility
<b>Longer Term Activities</b>		
<b>Land Use Ordinance Amendments (Longer Term)</b>		
Ch1-A.7.1.b	Aquifer protection – map and protect significant aquifers	Planning Board & Staff
Ch1-A.8.1.b	Wetlands – develop flexible wetland standards for urban areas	Planning Board & Staff
Ch1-A.9.1.g	Habitat – protect identified deer wintering areas	Planning Board & Staff
Ch1-D.1.1.c	Historic – incorporate Historic Resources List and Map into Zoning Ordinance	Planning Board & Staff
Ch1-D.1.1.d & Ch1-D.1.1.e	Historic – update historic resource standards and submission requirements	Planning Board & Staff
Ch1-D.1.3.b & Ch1-D.1.3.c	Archeological – update archeological resource standards and submission	Planning Board & Staff
<b>Studies and Planning (Longer Term)</b>		
Ch1-A.6.1.c	Stormwater – develop watershed management plans for impaired water bodies	Planning Board & Staff
Ch1-A.8.1.d	Wetlands – explore creation of wetlands mitigation program	Planning Board & Staff
Ch1-A.1.9.b	Habitat – identify and protect unfragmented habitat blocks and wildlife corridors	Planning Board & Staff
Ch1-C.1.2.d	Emergency services – assess providing contract police services to other communities	Police Chief
Ch1-C.2.2.a	Public works – assess potential recycling programs	Public Works Department
Ch1-D.1.1.a	Historic – identify, survey, and map additional significant historic resources	Planning and Permitting Department
Ch1-D.1.1.b	Historic – develop City Historic Resources List	Planning and Permitting Department
Ch1-D.1.3.a	Archeological – develop City Archeological Resource List	Planning and Permitting Department
Ch1-E.1.1.b	Recreation – assess viability of developing a consolidated sports field complex	Recreation Director
Ch1-G.1.2.a	Transportation – develop program to work with large employers to explore transportation demand management	Planning and Permitting Department
Ch1-G.2.1.d & Ch1-G.2.2.d & Ch1-G.2.3.b	Transportation – establish streetscape and site design criteria for the major road corridors	Planning and Permitting Department & Planning Board
Ch1-G.2.3.a	Transportation – assess improvements to the Washington-Southbound/Rodman intersection	Community Services Department & AVCOG
Ch1-G.2.4.a	Transportation – develop standards for appropriate development along Riverside Drive	Planning and Permitting Department
Ch1-G.2.5.a & Ch3-C.1	Transportation – pursue the construction of a new Turnpike interchange	City Manager & Council
Ch1-G.2.5.b	Transportation – study the viability and feasibility of New Auburn connector	Community Services Department
Ch1-G.2.7.b	Transportation – study impacts of increased traffic from western communities	Community Services Department
Ch1-G.2.9.d	Transportation – study feasibility of Downtown New Auburn one-way loop	Community Services Department
Ch1-G.3.1.b	Transportation – support study of realigning the Exit 75 interchange	Community Services Department
Ch1-G.3.2.a & Ch3-C.2	Transportation – study the establishment of passenger air and rail service at the	Planning and Permitting Department & Economic Development Department
Ch1-G.3.2.a & Ch3-C.2	Transportation – assess the potential for expansion of passenger rail service	Planning and Permitting Department & Economic Development Department
Ch1-H.1.1.a & Ch1-H.1.1.b	Community development – support development of neighborhood plans and their adoption as part of the Comprehensive Plan	Planning and Permitting Department
Ch1-H.2.2.b	Housing – develop program to allow transition of urban single family neighborhoods	Planning and Permitting Department

<b>Capital Projects and Investments (Longer Term)</b>		
Ch1-B.2.1.b	Sewers – use bonding or other strategies to extend sewers to New Auburn industrial areas	City Manager & Council
Ch1-B.2.2.c	Sewers – upgrade older central sewer lines	Auburn Sewerage District
Ch1-B.2.3.c	Sewers – use cost-effective technology and treatment processes at LAWPCA	Auburn Sewerage District
Ch1-C.2.1.a	Public works – develop southern staging area	Public Works Department
Ch1-E.1.2.c	Recreation – develop additional public access points along the rivers	Parks & Recreation Department
Ch1-G.2.1.c	Transportation – improve pedestrian and bicycle access along the Route 4 corridor	Community Services Department
Ch1-G.2.6.a	Transportation – improve Turner Street from Mt. Auburn Avenue to Center Street	Community Services Department
Ch1-G.2.6.b	Transportation – improve Turner Street between Union Street and Mt. Auburn Avenue	Community Services Department
Ch1-G.2.9.a	Transportation – establish Elm Street as primary route between Main Street and Minot Avenue	Community Services Department
Ch1-G.2.9.c	Transportation – redesign the Pleasant Street/Turner Street connection	Community Services Department
Ch1-G.2.9.e	Transportation – support creative parking solutions for downtown neighborhoods	Planning and Permitting Department
Ch1-G.2.9.f	Transportation – develop greenbelt between Pettengill park and West Pitch Park	Planning and Permitting Department
Ch1-G.2.9.g	Transportation – develop greenbelt from West Pitch Park to New Auburn	Planning and Permitting Department
Ch1-G.2.11.b	Transportation – require sidewalks in designated growth areas	Community Services Department
Ch1-G.2.11.d	Transportation – provide paved shoulders for pedestrians and bicyclists outside of growth areas	Community Services Department
Ch1-G.3.1.c	Transportation – implement the 2006 Airport Master Plan Update	Community Services Department
Ch1-G.3.2.c & Ch3-C.3	Transportation – expand fixed-route bus service and other transit service as necessary	Community Services Department & ARTC
Ch1-I.1.1.e	Economic development – implement the New Auburn Village Center concept	City Manager & Council & Economic Development Department
<b>Other Actions (Longer Term)</b>		
Ch1-A.3.1.e	Androscoggin River – develop land/trail management plans	Planning and Permitting Department
Ch1-A.9.1.c	Habitat – establish community education program	Planning and Permitting Department & Auburn Public Library
Ch1-A.9.1.d	Habitat – require documentation of forestry practices	Planning and Permitting Department
Ch1-A.9.1.e	Habitat – establish voluntary protection-advisory program	Conservation Commission & ALT & Conservation Organizations
Ch1-A.9.1.f	Habitat – create a wildlife corridor improvement program	Conservation Commission & ALT & Conservation Organizations
Ch1-D.1.2.d	Historic – incorporate City Historic Resources List into assessing data base	Assessor
Ch1-E.1.4.c	Recreation – develop program to connect urban residents with rural recreation	Park & Recreation Department
Ch1-E.1.5.b	Recreation – develop trail maintenance program for City-owned trails	Parks & Recreation Department & ALT & Conservation Organizations
Ch1-E.1.6.b	Cultural – develop marketing program for local cultural amenities	Chamber of Commerce
Ch1-F.1.1.b	Population – market Auburn as a desirable place to live	Chamber of Commerce
Ch1-G.2.7.a	Transportation – establish western connector route	Community Services Department
Ch1-G.2.12.a	Transportation – discourage through traffic on local streets when they are improved or reconstructed	Community Services Department

<b>Ch1-G.2.5.a &amp; Ch3-C.1</b>	Transportation – pursue the construction of a new Turnpike interchange
<b>Ch1-G.2.5.b</b>	Transportation – study the viability and feasibility of New Auburn connector
<b>Ch1-G.2.7.b</b>	Transportation – study impacts of increased traffic from western communities
<b>Ch1-G.3.1.b</b>	Transportation – support study of realigning the Exit 75 interchange
<b>Ch1-G.2.3.a</b>	Transportation – assess improvements to the Washington-Southbound/Rodman intersection
<b>Ch1-G.3.2.a &amp; Ch3-C.2</b>	Transportation – assess the potential for expansion of passenger rail service
<b>Ch1-A.8.1.d</b>	Wetlands – explore creation of wetlands mitigation program



<b>Ch1-I.1.1.e</b>	Economic development – implement the New Auburn Village Center concept
--------------------	------------------------------------------------------------------------------

City Manager & Council	
Community Services Department	
Community Services Department	
Community Services Department	
Community Services Department & AVCOG	
Planning and Permitting Department & Economic Development Department	
Planning Board & Staff	

City Manager & Council & Economic Development Department	Study Currently Funded for
-------------------------------------------------------------	----------------------------



2013



# City Council Workshop Information Sheet

City of Auburn

**Council Workshop Date:** February 4, 2013

**Item** C

**Author:** Dan Goyette, City Engineer

**Subject:** Central Park

---

**Information:**

Update of proposed rehabilitation of park area.

---

**Financial:** \$25,000 budget. Depending on the treatment recommended, costs vary from \$40,000-\$80,000+-

---

**Action Requested at this Meeting:**

Direction from the Council on the desired rehabilitation effort.

---

**Previous Meetings and History:**

---

**Attachments:**

- Site Plan
- Estimate
- Bench

ACADEMY STREET

MAIN STREET

183.0

179.9

161.4

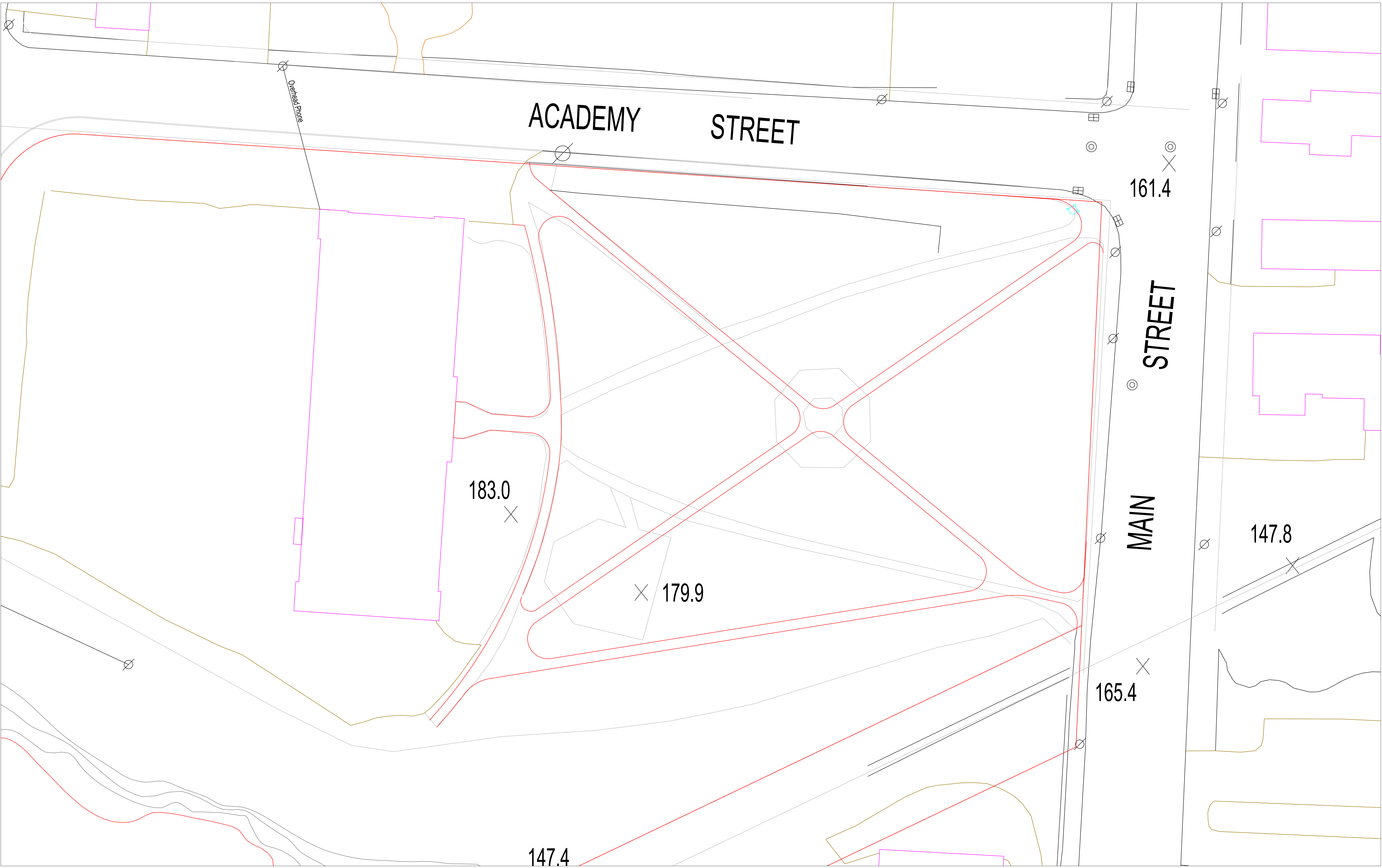
147.8

165.4

147.4

Overhead Phone

1 inch = 20 feet



## Central Park - Estimate

Item	Quantity	U/M	Unit Price	Total
Gravel (12")	265	CY	\$24.00	\$6,360.00
HMA- 19.0mm (2.0")	90	TON	\$70.00	\$6,300.00
HMA- 9.5mm (1.0")	45	TON	\$73.00	\$3,285.00
<i>Concrete Sidewalk</i>	<i>800</i>	<i>SY</i>	<i>\$50.00</i>	<i>\$40,000.00</i>
Loam & Seed	200	CY	\$25.00	\$5,000.00
Trees	10	EA	\$800.00	\$8,000.00
Benches	8	EA	\$1,400.00	\$11,200.00
Trash Receptacles	3	EA	\$800.00	\$2,400.00
<b>Project Total with Paved Sidewalk</b>				<b>\$42,545.00</b>
<b>Project Total with Concrete Sidewalk</b>				<b>\$72,960.00</b>

PW Labor for Demo and Rehab	\$ 7,500.00
Equipment Rates	\$ 7,000.00

### CDBG

Projects budgeted but not yet started	
Municipal Beach	\$62,500.00





## Bench 94

### Steel Benches with Backrest



- EASY ASSEMBLY
- WELDED SEAT & BACK REST

#### Materials

**End Frame:** 2" square x 11-gauge wall

**Seating Surface:** 1" square x 13-gauge steel tubing and 2" x 1" x 13-gauge wall steel tube

**Back Panel:** 3/8" thick steel and 2" x 1" x 13-gauge wall steel tube

**Fasteners:** Stainless steel

**Finish:** See our [options page](#) for choice of polyester powder finish (shown in Bronze).

94-60 6' long, 2 supports, 230 lbs.

94-80 8' long, 2 supports, 277 lbs.

#### Support Options

- S-1 Embedment
- S-2 Surface Plate
- S-5 Free-Standing

#### View Specifications

[94-60](#), [94-80](#)

<-- Back to selection page



## City Council Workshop Information Sheet

City of Auburn

**Council Workshop Date:** February 4, 2013

**Item** D

**Author:** Reine Mynahan, Community Development Director

**Subject:** New Auburn River Trail Property Acquisitions

**Information:** We have completed the appraisals of 6 Second Street, 9 Broad Street, and the land portion of 15 Broad Street. Negotiations with property owners are nearly complete. We expect the Broad Street acquisitions to take place in early March.

**Financial:** Funds budgeted in FY2012. See attached sheet for summary.

**Action Requested at this Meeting:** None

**Previous Meetings and History:** September 24, 2012.

**Attachments:**

Budget summary.

## COMMUNITY DEVELOPMENT PROGRAM BUDGET

### FY2012 BUDGET

#### SOURCES

Community Development	\$75,000
Urban Development Action Grant	<u>96,268</u>
Total	\$171,268

#### USES

Appraisals	7,300
Land Acquisitions	
15 Broad Street (land)	5,775
9 Broad Street (3-unit)	47,000
6 Second Street (2 unit)	100,000
Demolition Impact Survey	1,500
Relocation	
Displacement Benefits	4,800
Moving Expenses	<u>8,000</u>
Total	\$ 174,375
Shortfall	\$ 3,107

### FY2013 BUDGET

Demolition Impact Survey	\$ 5,000
Building Demolition	100,000



## City Council Workshop Information Sheet

City of Auburn

---

**Council Workshop Date:** February 4, 2013

**Item** E

**Author:** Clint Deschene, City Manager

**Subject:** Joint Agency Budget Committee

---

**Information:** Staffs will work with each agency to work on the format as requested from the Joint Cities of Lewiston and Auburn at the 1/28/2013 Joint Workshop.

---

**Financial:**

---

**Action Requested at this Meeting:**

---

**Previous Meetings and History:** January 28, 2013 Joint Workshop.

---

**Attachments:** Joint Agency Budget Committee Organization and Process

# **Joint Agency Budget Committee Organization and Process**

## **Mission/Purpose**

The mission of the Joint Agency Budget Committee is to

- Review and evaluate the budgets and work plans submitted by agencies jointly funded by Lewiston and Auburn;
- Presenting a funding recommendation to the respective Councils including, where appropriate, recommendations for program/operational changes that will improve financial performance;
- Upon request, meet to review any differences of opinion between the governing bodies of Lewiston and Auburn and present a recommendation to the Councils as to how it might be resolved.

## **Composition**

The committee will be comprised of 4 members: 2 councilors from each community appointed by the respective Mayors. A Chair Person shall be selected for each meeting, with the position of Chair alternating between communities. The Councilors representing the community that will provide the chair for the meeting shall designate the individual to serve as chair. Auburn shall chair the first meeting in even years; Lewiston in odd years.

## **TERM**

The term of members appointed to the Committee shall be for a single budget year. Should the cities wish to continue the Committee in future years, new appointments must be made; however, members who have served on the prior year's committee shall be eligible to be appointed to the committee for subsequent years.

## **STAFF SUPPORT**

The City Manager of Auburn and the City Administrator of Lewiston, along with the respective Finance Directors, shall provide staff support to the committee.

## **MEETINGS**

The Committee shall establish the times and places of its meetings, taking care to meet periodically in each community. Meetings shall be open to the public and notice of such meetings shall be posted by the respective City Clerks.

## **REPORT**

The Committee shall prepare and provide to the elected officials of both communities a report outlining its recommendations as to the appropriate level at which each agency should be funded. This report shall be provided sufficiently in advance to allow its recommendations to

be reviewed prior to the respective governing bodies adopting a final budget for the coming year.

### **PARTICIPATION OF OTHER COUNCILORS**

All members of the respective governing bodies in attendance at any meeting of the Committee shall be provided the privilege of participating in the meeting through asking questions and engaging in discussion; however, only the designated members of the Committee shall have a vote.

Any Councilor designated as a city's formal representative to the governing body of a joint agency shall be notified of the place, date, and time that agency's budget will be considered and offered the opportunity to appear before the Committee and participate in its discussions.

### **RECOMMENDATIONS NOT BINDING**

The recommendations of the Committee shall be advisory to the respective governing bodies, and each Council shall retain the right to make further budget adjustments and to meet separately with individual agencies to seek additional information regarding their budgets and work plans.

### **DISAGREEMENTS BETWEEN COUNCILS**

In the event that the City Councils fail to agree on the funding level of any agency, either Council may request that the Committee meet to review the disagreement and make a recommendation for its resolution.

## IN COUNCIL REGULAR MEETING JANUARY 22, 2013 VOL. 33 PAGE 90

Mayor LaBonte called the meeting to order at 7:03 P.M. in the Council Chambers of Auburn Hall. All Councilors were present.

The Boy Scout Troop 121 led the assembly in the salute to the flag.

### **I. Consent Items\*- None**

### **II. Minutes**

Motion was made by Councilor Hayes and seconded by Councilor LaFontaine to approve the minutes of the January 2, 2013 Special Council Meeting. Passage 7-0.

Motion was made by Councilor Young and seconded by Councilor Gerry to approve the minutes of the January 7, 2013 Council Meeting. Passage 7-0.

### **III. Reports**

**Mayor's Report** – No report.

**City Councilors' Reports** – Councilor Young reported. Councilor Crowley submitted a written report.

**City Manager's Report** – City Manager Deschene submitted a written report and reported on a few additional items.

**Finance Director, Jill Eastman** – December 2012 Monthly Report

Motion was made by Councilor Crowley and seconded by Councilor Young to accept the December 2012 Monthly Report. Passage 7-0.

### **IV. Communications, Presentations and Recognitions - None**

### **V. Open Session**

Don Malpass, Scout Master of Boy Scout Troop 121 and Auburn resident, Perkins Ridge Road. He commented on the success of their Christmas tree pickup fundraiser, he thanked the community for their support and also thanked Nick Labbe from the Public Works Department for his assistance. He said they would like to do this again next year.

Andy Wordell, 61 Mill Street commented on the Rural Development Program through Community Concepts which helps local families build homes. He also reached out to the Auburn Community to volunteer to help build these homes.

### **VI. Unfinished Business – None**

**VII. New Business**

1. **Resolve 01-01222013** Supporting a Passenger Transit Service linking the Municipalities of Portland, Lewiston, and Auburn.

Motion was made by Councilor LaFontaine and seconded by Councilor Walker.

Public comment – Jeremiah Bartlett, 107 Shepley Street and City of Portland Transportation Engineer spoke in favor of the Passenger Transit Service.

Passage 7-0.

2. **Order 04-01222013** Approving the Community Development's Curb Appeal and Small Business Programs funded with Community Development Block Grant funds as recommended by the Community Development Staff.

Motion was made by Councilor LaFontaine and seconded by Councilor Young.

Public comment – No one from the public spoke.

Passage 7-0.

3. **Order 05-01222013** Approving the amendments to the Community Development's Spot, Residential, Good Neighbor Start-up Grant, Heating Assistance and Commercial Programs funded with Community Development Block Grant funds as recommended by the Community Development Staff.

Motion was made by Councilor LaFontaine and seconded by Councilor Walker.

Public comment – No one from the public spoke.

Passage 7-0.

4. **Order 06-01222013** Approving to eliminate the Community Development's Energy, Historic Preservation, Lead, Neighborhood Enhancement, Down payment Assistance, and Tree Planting Programs funded with Community Development Block Grant funds as recommended by the Community Development Staff.

Motion was made by Councilor LaFontaine and seconded by Councilor Young.

Public comment – no one from the public spoke.

Passage 7-0



**IN COUNCIL REGULAR MEETING JANUARY 22, 2013 VOL. 33 PAGE 92**

5. **Order 07-01222013** Approving the amendments to the Guidelines of the Homebuyer, Homeowner Rehabilitation, and Security Deposit Loan Programs funded with HOME Investment Partnerships Program funds as recommended by the Community Development Staff.

Motion was made by Councilor LaFontaine and seconded by Councilor Young.

Public comment – no one from the public spoke.

Passage 7-0.

3. **Order 08-01222013** Setting the date for the School Budget Validation Referendum Election for June 11, 2013.

Motion was made by Councilor LaFontaine and seconded by Councilor Crowley.

Public comment – No one from the public spoke.

Passage 6-1 (Councilor Shea).

- VIII. Executive Session** - Discussion of a personnel issue (the City Manager's evaluation) with possible action to follow, pursuant to 1 M.R.S.A. §405(6)(A).

Motion was made by Councilor LaFontaine and seconded by Councilor Young.  
Passage 7-0, 7:51 P.M.

The Mayor declared Council out of Executive Session at 8:12 P.M.

Motion was made by Councilor LaFontaine and Seconded by Councilor Young to authorize the six month salary adjustment for the City Manager, for satisfactory performance, retroactive to December 18, 2012. Order 09-01222013.

Passage 7-0.

**Executive Session** – Discussion regarding the Ice Arena contract, pursuant to 1 M.R.S.A. §405(6)(C).

Motion was made by Councilor LaFontaine and seconded by Councilor Shea.  
Passage 7-0, 8:14 P.M.

The Mayor declared Council out of Executive Session at 9:19 P.M.

**Executive Session** - Discussion regarding labor contracts with possible action to follow, pursuant to 1 M.R.S.A. §405(6)(D).

**IN COUNCIL REGULAR MEETING JANUARY 22, 2013 VOL. 33 PAGE 93**

Motion was made by Councilor LaFontaine and seconded by Councilor Hayes. Passage 5-2 (Councilors Walker and Gerry were out of the room), 9:19 P.M.

The Mayor declared Council out of Executive Session at 9:28 P.M.

Motion was made by Councilor Crowley and Seconded by Councilor Walker to authorize the City Manager to execute the Collective Bargaining Agreement between the City and MAP (Maine Association of Police) Command Unit for January 1, 2013 through June 30, 2013. Order 10-01222013.

Passage 7-0.

Motion was made by Councilor Crowley and Seconded by Councilor Walker to authorize the City Manager to execute the Collective Bargaining Agreement between the City and MAP (Maine Association of Police) Police and Detective Unit for July 1, 2012 through June 30, 2013. Order 11-01222013.

Passage 7-0.

**IX. Open Session** – No one from the public spoke

**X. Future Agenda/Workshop Items** – None

**XI. Adjournment**

Motion was made by Councilor Young and seconded by Councilor LaFontaine to adjourn. Passage 7-0, 9:35 P.M.

A True Copy.

ATTEST   
Susan Clements-Dallaire, City Clerk

## Auburn Water-Sewerage-Lake Auburn Watershed Protection Commission Report 2013.02.04

**To:** Residents of Auburn  
Auburn Mayor and City Council

**From:** Tizz E. H. Crowley- Auburn City Councilor Ward 1

**Meeting Date:** Monday February 4, 2012

**Prepared:** Wednesday January 30, 2013

The Auburn Water and Sewerage Districts have had an adventuresome week. Wanted to provide an update on some issues we experienced over the weekend. Although it was mostly water-related, sewer did manage to get some attention as well.

The fun all began Friday afternoon January 25th at the UV Facility on Turner Street. The Districts energy supplier requested a mandatory electrical load-shed for the UV Facility. One of the 2 generators would not start so the UV building and entire facility had no power. The crew finally scrambled to get the generator running. They had to bypass the electrical circuits so the generator could slowly come up to speed without being under load. While nursing the generator back to health, the lack of full electricity affected the propane heat system. The crew worked well into the night to make sure the building had full heat and electricity. By midnight everything was back up and running.

The real problem with the UV Facility began at about 2:15 Saturday morning January 26th. There was some type of fault with a PLC (*programmable logic controller – essentially a mini process computer*) controlling the Raw Water Pumps that supply flow to Lewiston and Auburn. The end result was that the Raw Water Pumps tried to supply a high volume of flow for both Lewiston and Auburn, but only Lewiston was calling for water. A water flow rate of 2,500 gpm came up out of the wet well and flooded the UV process room; from there, water went into the electrical room and panels, eventually cascaded through the chemical room, and into the entire administrative area and laboratory.

The magnitude of the flow also blew open the exterior doors and sent water to our Raw Water Pump Station. The flood water got into the Raw Water wet well. Joint personnel from the Water and Sewerage Districts responded and isolated the Raw Water wet well. It was fully drained, and with a crew inside of it, power washed it and disinfected with a 300 ppm chlorine solution. Crew also drained and inspected the Finished Water wet well. Personnel went inside and fully cleaned it.

**Important Point: there was no threat to public health.** Our Finished Water Pumps did not deliver any water during the event, so there was no problem with water quality.

All electrical and chemical equipment appeared to survive damage, with the exception of the UV control panels. All components were individually checked and tested. The plan was to start back up with UV offline and using free chlorine for disinfection. Somewhere around 5:30 PM staff fired up the Raw Water Pumps and flushed the lines through an on-site hydrant. Once things looked good the crew started running Raw Water through the UV Plant to check out all the chemical systems. Once they were validated, pumps were used to flush out the joint Finished Water clear well and also the CT main. As all systems checked out, Lewiston followed suit to ensure we slowly ramped everything back up to full speed. Lab technicians were on-site as we went back to full start-up to make sure all chemical feeds were at appropriate levels and that all sensors were validated.

It was quite a show of cooperation as the Districts had about 25 joint personnel from Lewiston and Auburn working to get everything cleaned up, checked, tested, and back into operation. Auburn didn't start producing water till about 10PM Saturday night January 26th. Lewiston finally came on line at about 2:00 AM Sunday morning. The management and operations of this event shows the amazing dedication and effort by both Lewiston and Auburn staff to keep water flowing to the cities.

One of the challenges throughout the ordeal was that we had a plugged sewer pump station out at Taylor Pond and a water main break to contend with. It turns out that the water main break reported by the paper on Friday night was in fact on Auburn's piping. It occurred at a location where Lewiston's transmission main had an abandoned cross-connection to Auburn's distribution system. So the main break was stressing our emergency reserves while the treatment plant was offline. It also pulled personnel away from helping at the UV facility. On top of all this, the Sewerage District had to send personnel to remove pumps and swap out electrical relays at a Taylor Pond wastewater station. The pump station was once again plugged **due to wet wipes and cloth rags.**

In summary – all water & sewer operations are now running fine. AWD/ASD are still in damage assessment mode at the UV Facility. ServiceMaster is concluding water damage remediation and the electrical crews are working on detailed inspections of every piece of equipment. Yes, there are insurance claims pending – there may be mechanical liability due to failed components, but AWD/ASD are also investigating whether there were design flaws with the system by not having appropriate 'fail-safe' measures. I expect we will hear more in the coming week. Many thanks to the crews who performed exceptionally!

Well, with that story, how will my reporting of routine business be of any interest?

**Lake Auburn Watershed Protection Commission:** LAWPC met on Wednesday, January 9<sup>th</sup>. Lynne Richard, the new Public Education and Outreach Coordinator, was introduced. Expect to see Ms. Richards actively participating in our city as she begins work with a focus on a school program. Her mission is to improve community relations and engage all to understand the importance of protecting the water quality of Lake Auburn.

All members of the community are invited to attend the Formal Presentation of Phase 1 Findings of Lake Auburn, better known as the "Fish Kill" event. The open session will be held on Wednesday, February 13<sup>th</sup>, 5:00pm at Lewiston City Hall. We hope the program will be recorded so residents will have access to DVD review at the cities and the libraries. The residents of Auburn and Lewiston are important Stakeholders in the Lake. Your attendance is encouraged. Dan Bisson of CDM Smith, the consulting firm, updated the Commission on the status of the Phase 1 Diagnostic Study as of this meeting.

The Commission received a \$10K Project Canopy Grant to be used for an upgrade/update of the Forestry Management Plan. There was discussion about the current Forest Management Harvest Plan. MJ Dillingham reported the plan had a unique prescription for each lot and it was determined once the Forester was on the group.

John Storer, Superintendent of AWD/ASD reported he had attended an introductory meeting with the owners of the Lake Auburn Community Center. John invited the Commissioners and the audience to attend the Winter Fest event planned on the property recently donated for the new center.

Finally, there was a brief remark about the progress on the Swim-ability Study results for water at the Lake Outlet. In follow up Supt. Storer told me Eileen Pannetier and Ben Lundstead from CEI presented their preliminary findings on the Swimmability Study. The results were a bit discouraging however no details were shared with me at this time. The written report expects to be delivered by the end of next week (by Friday, Feb 1). I will keep the community update

The City has begun implementation of long term planning relating to the Comp Plan. The Comp Plan lays out new growth areas, service considerations, new growth patterns in some neighborhoods, etc. The extent to which we can understand how the Auburn Water and Sewerage Districts grow infrastructure to accommodate that and its costs will help Auburn in its planning. I will be reporting the progress in my future reports.

**Auburn Ward 1 Report 2013.02.04**

*A beautiful winter day in Ward 1 – Tuesday January 29, 2013*





**TO:** Residents and Taxpayers of Auburn  
Mayor and Auburn City Council

**FROM:** Tizz E. H. Crowley- Auburn City Councilor Ward 1

**MEETING DATE:** Monday, February 4, 2013

**THANK YOU'S:** There was lots of fun during the first week of Winter Fest in Auburn. I encourage our community to get out this coming weekend February 1-3<sup>rd</sup> and experience winter here. Thank you to the City crews who worked hard to have public venues ready. Thank you to the local businesses who gave financial support. Thank you to the many organizations, including the Perkins Ridge and Andy Valley Snowmobile groups, the Lake Auburn Neighborhood Association, the Androscoggin Land Trust, and of course Auburn's favorite ski facility- Lost Valley. Your hard work and hospitality left very warm sentiments for such a frigid weekend.

**February:** February is American Heart Month, and unfortunately, most of us know someone who has had heart disease or stroke. Cardiovascular disease is the leading cause of death in the United States; one in every three deaths is from heart disease and stroke, equal to 2,200 deaths per day. These conditions are also leading causes of disability preventing people from working and enjoying family activities. Cardiovascular disease is also very expensive— together heart disease and stroke hospitalizations in 2010 cost the nation more than \$444 billion in health care expenses and lost productivity. However, we can fight back against heart disease and stroke.

Heart disease and stroke affects all of our lives, but we can all play a role in ending it. Prevention starts with everyone. Protect yourself and your loved ones from heart disease and stroke by understanding the risks and taking these steps.

- Get up and get active by being physically active for at least 30 minutes on most days of the week.
- Know your ABCS:
  - Ask your doctor if you should take an **A**spirin every day.
  - Find out if you have high **B**lood pressure or **C**holesterol, and if you do, get effective treatment.
  - If you **S**moke, get help to quit.

- Make your calories count by eating a heart-healthy diet high in fresh fruits and vegetables and low in sodium and trans fat.
- Take control of your heart health by following your doctor's prescription instructions.

Ladies, this is your time- February 1, 2013, marks the 10th Year of the American Heart Association's [Go Red For Women](#)® movement — 10 years of fighting to save women's lives from heart disease. While the progress has been significant, there's a long way to go. Here's why:

- Heart disease is still the No. 1 killer of women, causing 1 in 3 deaths each year.
- Heart disease kills more women than men, at an average rate of one death per minute.
- Heart disease kills more women than all kinds of cancer combined.

Watch for announcements of free blood pressure checks in the community. Ward 1 will be hosting session(s). Go Red for Women this month- remind others of the important message.

**Comments on Financial Reports:** In an effort to shorten the length of our meeting last month, I mentioned Financial Director Eastman met with me and answered all my questions. I am pleasantly surprised to hear from several residents that wanted to know what we had discussed. This demonstrates residents are interested in the way Auburn manages its money. I just realized I don't have the documents here as I write this report. If time permits, I'll update this report before submission, otherwise I cover next time.

**March your calendars:** "Salute to Dinny Sullivan-Hats Off to Neighborhood Businesses "Day is Saturday, March 16<sup>th</sup>". We have some wonderful additions to the celebration including an evening concert by Auburn's own Mr. Larry Gowell, historical walks in both Auburn and Lewiston lead by John Sullivan on behalf of the Androscoggin Historical Society, a presentation by Ms. Annette Dorey on her forthcoming book "Miss Dr. Lucy" and Maine's Pioneering Female Physicians, and the Open House at the new PAL Center.

We would like to recognize Auburn neighborhood businesses, so please send along recommendations. There is no cost to the highlighted company. It's just a small "thank you" for all you do in our community. Would you like to host an event or activity, please contact me? It's a great day to share a fund raising event for your local charity or to show off your favorite Auburn spot or program.

**Safety Concern:** Snowmobiling is great fun. We are lucky to have many groomed miles here in Auburn that are maintained by local clubs and used for snowmobiling, snowshoes, Nordic skiing and just meandering in the wood. But please take a moment and be safe.

The Maine Warden Service is responsible for lost and missing snowmobilers. Often, the Warden Service is called to search for snowmobilers who really are not lost or missing, which results in spending many unnecessary hours of effort by wardens. You can help them by filling out a trip itinerary and leaving it on their door or under the wiper of your vehicle. For a blank itinerary form, [visit the Department of Inland Fisheries and Wildlife]

[http://www.maine.gov/ifw/atv\\_snowmobile\\_watercraft/snow\\_tripitinerary.htm](http://www.maine.gov/ifw/atv_snowmobile_watercraft/snow_tripitinerary.htm).



**Visiting Hours:** Tuesday, February 12<sup>th</sup> - 2-4pm, Thursday February 28<sup>th</sup>

5-7pm at the Auburn Public Library. Please drop by.

# MANAGER'S REPORT

---

*January 30, 2013*

## **Twin Rink Ice Arena**

City Council is holding a Special City Council meeting on Thursday, January 30, 2013 to discuss the Twin Rink Ice Arena with George Schott. Council will review draft operating budget and design plans.

## **Budget**

City Manager and Finance Director are setting up individual meetings with Department Directors to review their proposed FY2014 CIP and Department Budget requests.

## **Back to Work Program**

City Staff have designed a program to utilize available resources for various projects throughout the City. City Staff will be making a presentation to the City Council at a future meeting.

## **Mt. Apitake Project**

City Staff have been working with the Maine National Guard and various other agencies on the future use of Mt. Apitake. Currently there is a survey on our website asking for citizen participation. Once the results of have been tabulated we will forward them to City Council for their review.

## **Regional Imaging**

Jill Cunningham of the Finance Department is representing the City on a Regional Imaging Committee in partnership with the Chamber of Commerce. The committee is putting together an RFP seeking firms to help the region identify an image that truly reflects what we stand for.



Office of the Mayor and City Council

CITY OF AUBURN



PROCLAMATION

**Recognizing George E. Roy for his many years of Community Involvement and the impact he has made on the youth of Auburn.**

Filed January 24, 2013 by Leroy Walker

*WHEREAS*, George E. Roy has been an active member of the community for over 60 years and;

*WHEREAS*, Mr. Roy has helped Auburn children enjoy the benefits of skating at Ingersoll Arena by purchasing over 100 pairs of skates for those that otherwise could not have participated; and

*WHEREAS*, Mr. Roy generously donated funds and his time to coordinate with the Auburn Recreation Department to transport and teach children how to skate; and

*WHEREAS*, Mr. Roy further donated funds to purchase 80 pairs of ice skates for use at the PAL Center; and

*WHEREAS*, Mr. Roy, without hesitation, donates to help underprivileged kids the opportunity to use our recreational programs and, if needed, food for those in need regardless of age or circumstance; and

*NOW, THEREFORE*, the Auburn City Council, on behalf of the citizens of the City of Auburn herewith recognizes and commends George E. Roy for his unyielding support and dedication to our youth and recreation department and wish him many more years of happiness which include his love of dance, sharing his wonderful sense of humor, visiting family abroad, and an occasional Tootsie Roll.

IN WITNESS WHEREOF, I have hereunto

Set my hand and caused the Seal of the

City of Auburn, Maine

to be fixed this 4<sup>th</sup> day of February 2013.

Mayor Jonathan P. LaBonté

# Auburn City Council Meeting

## Police Department Swearing-In and Badge Pinning Ceremony



Auburn Police Department  
60 Court Street | Auburn, Maine 04210  
[www.auburnpd.com](http://www.auburnpd.com)

February 4, 2013

## Law Enforcement Oath of Honor

---

On My Honor,  
I Will Never Betray My Badge,  
My Integrity, My Character,  
Or The Public Trust.

I Will Always Have  
The Courage To Hold Myself  
And Others Accountable For Our Actions.

I Will Always Uphold the Constitution,  
My Community And the Agency I Serve.

## New Patrol Officers

---

**Patrol Officer Thomas J. Ellis**

Graduated from the Maine Criminal Justice Academy on  
December 16, 2011.

**Patrol Officer Mitchel Morse**

Graduated from the Maine Criminal Justice Academy on  
December 14, 2012.

**Patrol Officer John Chamberlain**

Lateral transfer from Valdosta, Georgia with seven years  
of law enforcement experience.



# City Council Agenda Information Sheet

City of Auburn

**Council Meeting Date:** February 4, 2013

**Order** 12-01312013

**Author:** Sue Clements-Dallaire, City Clerk

**Subject:** Design and Budget of the double sheet Ice Arena

**Information:** The Council has requested regular updates on this project. As the design is very close to final, the general contractor and subcontractors are about to order materials, and updates are prepared for the budget; the timing to hold a special meeting and update the City was appropriate.

**Financial:**

**Action Requested at this Meeting:**

**Previous Meetings and History:** Postponed from the 1/31/2013 Special Council Meeting

**Attachments:**

- Design plans
- Budget Memo
- Budget
- Schedule Rink 1
- Schedule Rink 2
- Order 12-01312013

COPYRIGHT © 2013 FORESIDE ARCHITECTS  
THIS DRAWING IS NOT BE LOANED, REPRODUCED,  
OR COPIED WITHOUT THE WRITTEN PERMISSION OF FORESIDE ARCHITECTS

GENERAL NOTES:

REVISIONS:



2 FERRY ROAD Phone: 207-781-1344  
FALMOUTH, ME 04103 Fax: 207-699-3364  
www.foresidearchitects.com

Project Status:  
CONCEPT  
PLANS  
Drawing Number:  
FA00972



Rinks at  
Auburn Mall  
Turner Street  
Auburn, Maine

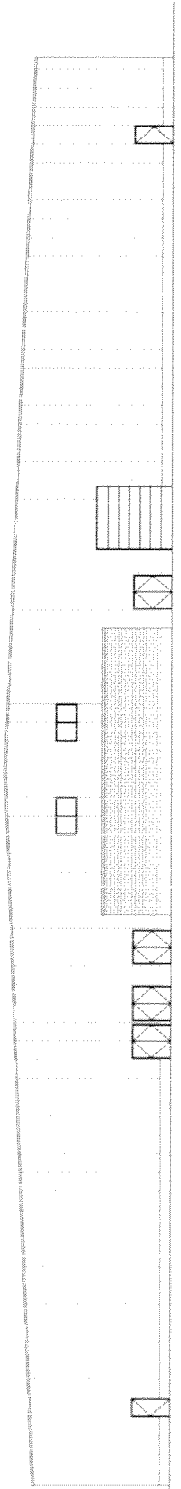
Drawing Name:  
Ground Floor Plan

Scale:  
3/8" = 1'-0"

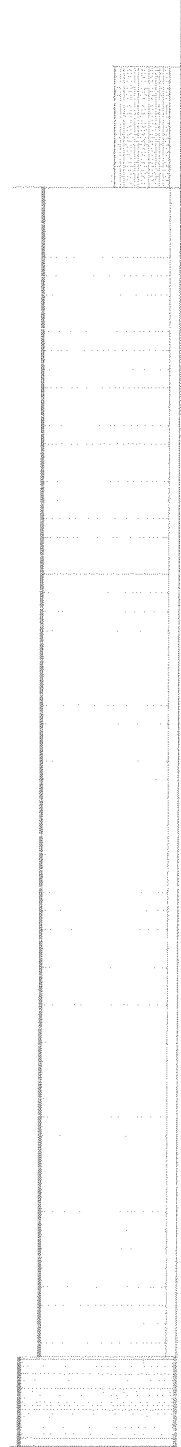
Date:  
01/08/13

SHEET

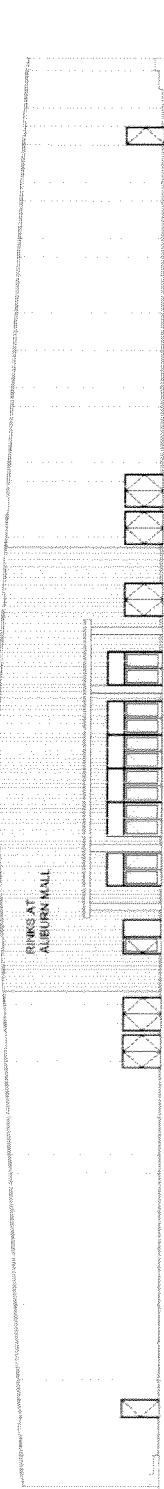
A2.1



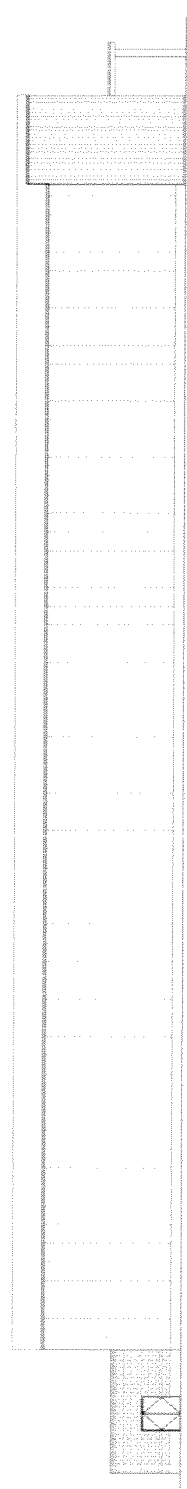
1 REAR ELEVATION  
SCALE: 3/8" = 1'-0"



2 RIGHT ELEVATION  
SCALE: 3/8" = 1'-0"



3 FRONT ELEVATION  
SCALE: 3/8" = 1'-0"



4 LEFT ELEVATION  
SCALE: 3/8" = 1'-0"

COPYRIGHT 2013 BY FORESIDE ARCHITECTS, LLC. ALL RIGHTS RESERVED. THIS DOCUMENT IS THE PROPERTY OF FORESIDE ARCHITECTS, LLC.

GENERAL NOTES

REVISIONS

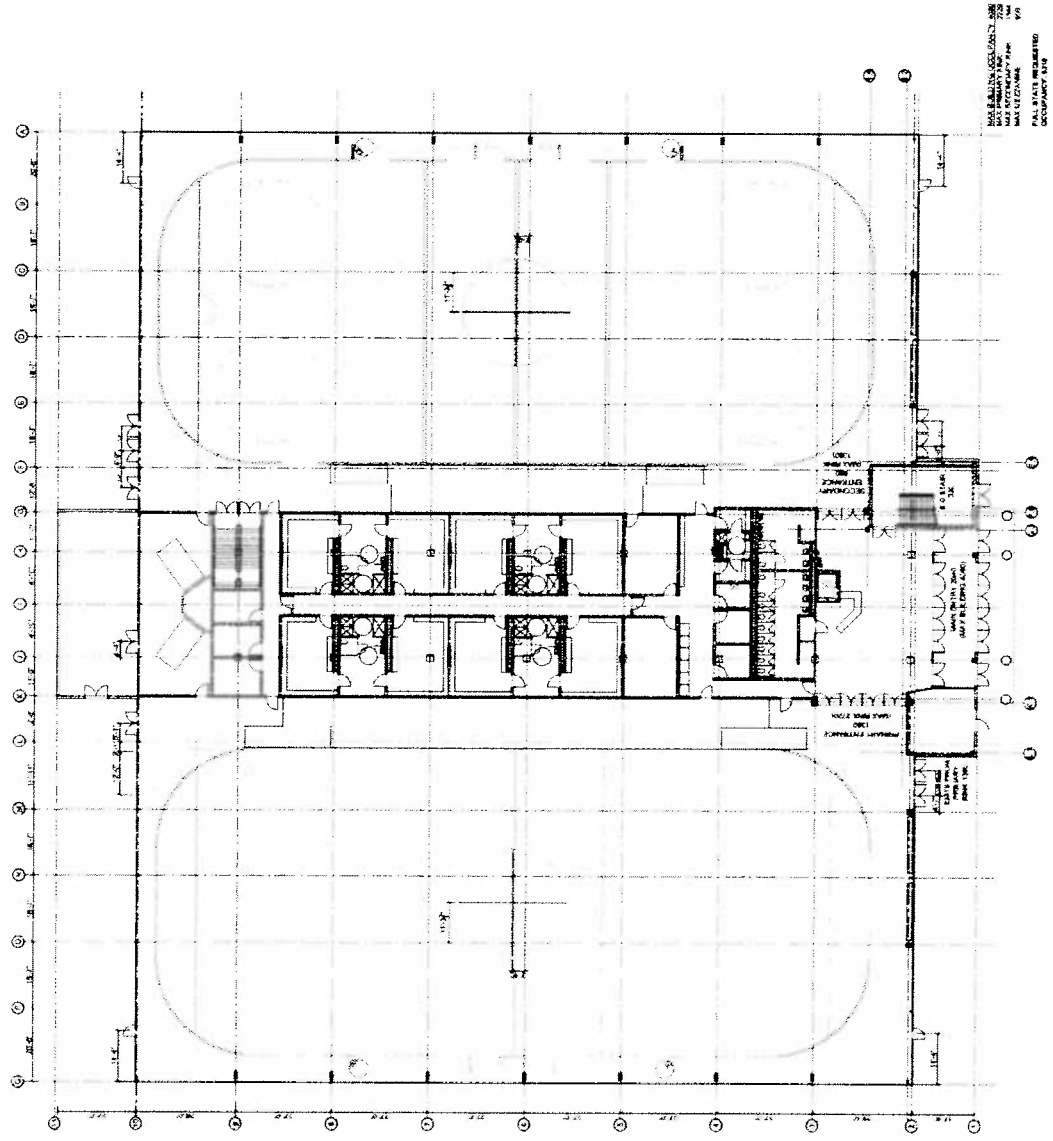
**FORESIDE ARCHITECTS**  
LLC  
5 FENDEL ROAD Phone: 207.731.3344  
PALM BEACH, FL 33410 Fax: 207.699.1364  
www.foresidearchitects.com

PROJECT NO. 10  
CONCEPT PLANS  
PROJECT NUMBER: FAC0112  
PRELIMINARY PLANS  
FOR THE  
CONTRACTOR

Rinks at  
Auburn Mall  
Turner Street  
Auburn, Maine

DATE: 01/28/13  
DRAWN BY: [Name]  
CHECKED BY: [Name]  
GROUND FLOOR PLAN

Scale: 3/32"=1'-0"  
Date: 01/28/13  
SHEET: A1.1



MAINTENANCE OCCUPANCY 200  
FLOOR FINISHES TO BE  
AS SHOWN ON SHEET  
FAC0112-02  
DATE: 01/28/13  
DRAWN BY: [Name]  
CHECKED BY: [Name]  
GROUND FLOOR PLAN





**Dual Surface Ice Rink**

**Jan 2013 Line Items**

**Revenue Changes**

- All ice time rentals are calculated @ \$235 per hour
- Bolts hours: Conversation with Bolts representative on realistic rental hours.
- St Dom's hours: Includes summer program
- Concession (operated by facility): Gross Revenue = **\$130,000.00**

**Gross sales = \$130,000      Food cost – 33% = \$42,900      Labor cost – 33% = \$42,900**

- Sign Advertisement:
  - Dasher Boards      80 potential/60 sold @ \$1,500 x 60      = \$90,000
  - Wall signs      40 potential/20 sold @ \$1,000 x 20      = \$20,000
  - Zamboni      2 potential/2 sold @ \$5,000      = \$10,000
  - Score Board      2 potential/2 sold @ \$5,000      = \$10,000
  - Ice Logo      8 potential/8 sold @ \$1,200      = \$9,600
  - Puck Wall      25 sold per year @ \$250      = \$6,250
  - **Total Income**      **\$145,850**
- Figure Skate Program: 52 weeks x 2 hours x \$235      **\$24,440.00**
- Public Skate Program: 20 hrs per month x 12 x 60 people x \$5      **\$72,000.00**
  - Public skating will be available 3 days per week
  - Cost has gone from \$3 & \$4 dollars to \$5 dollars across the board.
  - 1 week day evening (Wed) 1 weekend evening (Sat) 1 weekend Mid -day (Sun)
- Skate Rentals: 15 people per/hr x 240 hours x \$5      **=\$18,000.00**
- B.Day Party: 2 Parties/per wk x 52wks x \$200      **=\$21,000.00**
- Shiny Hockey; 5 hours/per wk x 52 wks x 10players x \$10      **=\$26,000.00**
- Credit Enhancement TIF – Increased to City's 53% share.

**Revenues not included on spread sheet:**

- \* **Ice rentals and skate rentals from: Day care centers-school trips- summer camps**
- \* **5 months of down time in rink #2 (April to August)-Conventions-Concerts- Boat shows- Graduations**





- \* Vending and Arcade revenues

**Expense Changes:**

- \*Revised lease amount
- \*Revised property taxes
- \*Director (payroll deduction) - Profit incentive
- \*Repair to Equipment/Building (deducted from line item) should be minimal expense because of new equipment and building
- \* Supplies – includes concession expenses
- \*Postage (added)
- \* Phone and Internet (added to line item) – Wi-Fi
- \*Water & Sewer (added to line item)- 5x greater than Ingersoll expenses
- \* Part Time Salary - Concessions

<b>Auburn Mall Ice Arena</b>					
<i>FISCAL YEAR ENDING June 30, 2014</i>					
<b>INCOME:</b>			<b>Ingersoll (2012)</b>	<b>Old Budget</b>	<b>Updated Budget</b>
Ice Time		Hours	\$ 349,043.00		
\$235 per hour	Twin City Titans	1,050		\$ 236,250.00	246,750.00
	Gladiators	600		\$ 135,000.00	141,000.00
	Maine Develop.	294		\$ 66,150.00	69,090.00
	L/A Seniors	300		\$ 67,500.00	70,500.00
	Rouesseau's	100		\$ 31,500.00	31,500.00
	Power Play	80		\$ 18,000.00	18,800.00
	Boston Kremes	100		\$ 22,500.00	23,500.00
	Tuesday Night Mens	52		\$ 11,700.00	12,220.00
	Monday Night Co-ed	52		\$ 11,700.00	12,220.00
	Mike Berube	36		\$ 6,300.00	8,460.00
	Bolts	80		\$ 45,000.00	18,400.00
	Fons Group	30		\$ 6,250.00	7,050.00
	Greg Gilbert	26		\$ 5,850.00	6,110.00
	L/A Edge	-		\$ 9,000.00	9,400.00
	Townsend Clinic	50		\$ 9,750.00	11,750.00
	Gardiner Area Youth				
	Central Maine Area Youth				
	Tribal Men's League				
	Midcoast Youth				
	Maine Amateur				
High Schools					
	ELHS Practice	41		\$ 27,675.00	9,635.00
	Leavitt Practice	41		\$ 33,750.00	9,635.00
	Poland/GNG Practice	35		\$ 18,000.00	8,225.00
	Red Hornets Practice	35			8,225.00
	ELHS Games	9			2,115.00
	Leavitt Games	9			2,115.00
	Poland /GNG Games	9			2,115.00
	Red Hornets Games	8			1,880.00
Growth In Year One for rentals	St.Doms	291		\$ 67,500.00	68,385.00
Concession Stand			\$ 33,105.92	\$ 35,000.00	130,000.00
Proshop			\$ 7,673.79	\$ 12,000.00	12,000.00
Sign Advertisement			\$ 2,478.00	\$ 90,500.00	145,850.00
Tournament Revenues			\$ -	\$ 41,200.00	41,200.00
Figure Skate			\$ 1,332.55	\$ 2,500.00	25,000.00
Public Skate			\$ 13,478.86	\$ 27,000.00	72,000.00
Skating Instruction			\$ 13,815.69	\$ 27,000.00	27,000.00
Room Rentals			\$ -	\$ 4,800.00	4,800.00
Birthday Parties			\$ -	\$ 12,000.00	21,000.00
Skate Rentals				\$ 2,400.00	18,000.00
Shinny Hockey			\$ 12,498.00	\$ 12,498.00	26,000.00
In-house Clinics			\$ -	\$ 20,000.00	20,000.00
Credit Enhancement TIF				\$ 40,000.00	88,252.00
Naming			\$ -	\$ 25,000.00	25,000.00
<b>TOTAL INCOME</b>			\$ 433,425.81	\$ 1,181,273.00	\$ 1,455,182.00
<b>EXPENSES:</b>					
Lease			\$ -	\$ 570,000.00	529,125.00
Taxes			\$ -	\$ 156,320.00	166,515.00
	Director / Marketing		\$ 92,632.67	\$ 68,000.00	58,000.00
	Operations and Facilities			\$ 54,112.50	54,112.00
	Admin. Assist			\$ 31,200.00	31,200.00
	Maintenance Supervisor			\$ -	0.00
	Ice Attendant (2)			\$ 45,600.00	45,600.00
	Part-time Concession		\$ 15,380.37	\$ -	42,900.00
	Overtime		\$ 1,388.10	\$ 2,000.00	2,000.00
Uniforms			\$ 694.84	\$ 1,400.00	1,400.00
Health Insurance			\$ 25,923.82	\$ 74,440.00	74,440.00
Fica/Med			\$ 8,196.59	\$ 15,369.81	17,886.62
Retirement			\$ 885.43	\$ 12,054.75	14,028.72
Cafeteria Plan			\$ -	\$ 5,700.00	5,700.00
Marketing Consultant			\$ -	\$ 24,000.00	24,000.00
CPA services			\$ 11,584.02	\$ 2,100.00	2,100.00

Advertising				\$ 20,000.00	15,000.00			
Equipment Inspection				\$ 2,095.00	2,100.00			
Repairs-Building			\$ 20,600.55	\$ 8,464.00	8,464.00			
Repairs-Equip.			\$ 7,789.44	\$ 22,256.00	15,000.00			
Repairs-Maintenance Contract			\$ 310.50	\$ 2,824.00	3,000.00			
Training and Tuition			\$ 220.02	\$ 1,000.00	1,000.00			
Travel			\$ 261.50	\$ 1,500.00	1,000.00			
Dues			\$ 118.00	\$ 150.00	150.00			
Insurance			\$ 1,200.00	\$ 10,561.00	10,561.00			
Supplies-			\$ 17,196.89	\$ 17,500.00	42,900.00			
Postage			\$ -	\$ -	100.00			
Phone and Internet			\$ 2,003.66	\$ 1,666.00	2,500.00			
Water and Sewer			\$ 1,531.19	\$ 5,082.00	7,700.00			
Electricity			\$ 95,710.22	\$ 162,950.00	162,950.00			
Gas			\$ 22,106.75	\$ 61,486.00	61,486.00			
CIP			\$ 19,143.00	\$ 15,000.00	15,000.00			
Debt Service Ingersoll			\$ 94,759.38	\$ 94,759.38	\$ 94,759.38			
Contingency Expenses								
<b>TOTAL PROGRAM EXPENSES</b>			\$ 439,636.94	\$ 1,489,590.44	\$ 1,512,677.72			
<b>NET INCOME</b>			\$ (6,211.13)	\$ (308,317.44)	\$ (57,495.72)			
YTD Income / -Loss								

# SMALL RINK

## DECEMBER 2013

DEC		Public Skate	FIGUR E SKATE	Titans Youth	Adults Pick-up	Figure Skate	Shinny	Middle School	L-A Seniors	ELHS	St Doms	ST DOMS GIRLS	LVHS 8:45-9:45	
SAT 1	5:45-6:45	7:00-8:00	8:15-9:15	9:30-10:30	10:45-11:45	12:00-1:00	1:15-2:15	2:30-3:30	3:45-4:45	5:00-6:00	Public Skate 6:00-8:00		8:45-9:45	10:00-11:00
SUN 2	5:45-6:45	7:00-8:00	8:15-9:15	9:30-10:30	10:45-11:45	12:00-1:00		2:00-4:00	4:10-5:10	5:20-6:20	6:30-7:30	7:40-8:40	8:50-9:50	10:00-11:00
MON 3	5:45-6:45	7:00-8:00	8:15-9:15	9:30-10:30	10:45-11:45	12:00-1:00	1:15-2:15	2:30-3:30	3:45-4:45	5:00-6:00	6:15-7:15	7:30-8:30	8:45-9:45	10:00-11:00
TUE 4	5:45-6:45	7:00-8:00	8:15-9:15	9:30-10:30	10:45-11:45	12:00-1:00	1:15-2:15	2:30-3:30	3:45-4:45	5:00-6:00	6:15-7:15	7:30-8:30	8:45-9:45	10:00-11:00
WED 5	5:45-6:45	7:00-8:00	8:15-9:15	9:30-10:30	10:45-11:45	PUBLIC SKATE 12:00-2:00		2:45-4:00	4:20-5:20	5:30-6:30	6:40-7:40	7:50-8:50	8:45-9:45	10:00-11:00
THU 6	5:45-6:45	7:00-8:00	8:15-9:15	9:30-10:30	10:45-11:45	12:00-1:00	1:15-2:15	2:30-3:30	3:45-4:45	5:00-6:00	6:15-7:15	7:30-8:30	8:45-9:45	10:00-11:00
FRI 7	5:45-6:45	7:00-8:00	8:15-9:15	9:30-10:30	10:45-11:45	12:00-1:00	1:15-2:15	2:30-3:30	3:45-4:45	5:00-6:00	6:15-7:15	7:30-8:30	8:45-9:45	10:00-11:00
SAT 8	5:45-6:45	7:00-8:00	8:15-9:15	9:30-10:30	10:45-11:45	12:00-1:00	1:15-2:15	2:30-3:30	3:45-4:45	5:00-6:00	6:15-7:15	7:30-8:30	8:45-9:45	10:00-11:00
SUN 9	5:45-6:45	7:00-8:00	8:15-9:15	9:30-10:30	10:45-11:45	12:00-1:00		2:00-4:00	4:10-5:30	5:00-6:00	6:15-7:15	7:30-8:30	8:45-9:45	10:00-11:00
MON 10	5:45-6:45	7:00-8:00	8:15-9:15	9:30-10:30	10:45-11:45	12:00-1:00	1:15-2:15	2:30-3:30	3:45-4:45	5:00-6:00	6:15-7:15	7:30-8:30	8:45-9:45	10:00-11:00
TUE 11	5:45-6:45	7:00-8:00	8:15-9:15	9:30-10:30	10:45-11:45	12:00-1:00	1:15-2:15	2:30-3:30	3:45-4:45	5:00-6:00	6:15-7:15	7:30-8:30	8:45-9:45	10:00-11:00
WED 12	5:45-6:45	7:00-8:00	8:15-9:15	9:30-10:30	10:45-11:45	12:00-1:00	1:15-2:15	2:30-3:30	3:45-4:45	5:00-6:00	6:15-7:15	7:30-8:30	8:45-9:45	10:00-11:00
THU 13	5:45-6:45	7:00-8:00	8:15-9:15	9:30-10:30	10:45-11:45	12:00-1:00	1:15-2:15	2:30-3:30	3:45-4:45	5:00-6:00	6:15-7:15	7:30-8:30	8:45-9:45	10:00-11:00
FRI 14	5:45-6:45	7:00-8:00	8:15-9:15	9:30-10:30	10:45-11:45	12:00-1:00	1:15-2:15	2:30-3:30	3:45-4:45	5:00-6:00	6:15-7:15	7:30-8:30	8:45-9:45	10:00-11:00



# LARGE RINK

## DECEMBER 2013

DEC	ST DOMS	Public Skate	FIGURE SKATE	Titans	Adults Pick-up	Learn to Skate	Shinny	Hebron	L-A Seniors	Red Hornets	LVHS	ELHS	PGNG	HS Game Time
SAT 1	5:45-6:45	7:00-8:00	8:15-9:15	9:30-10:30	10:45-11:45	12:00-1:00	1:15-2:15	2:30-3:30	3:45-4:45	5:00-6:00	6:15-7:15	7:30-8:30	8:45-9:45	10:00-11:00
SUN 2	5:45-6:45	7:00-8:00	8:15-9:15	9:30-10:30	10:45-11:45	12:00-1:00	PUBLIC SKATE 2:00-4:00		4:10-5:10	5:20-6:20	6:30-7:30	7:40-8:40	8:50-9:50	10:00-11:00
MON 3	5:45-6:45	7:00-8:00	8:15-9:15	9:30-10:30	10:45-11:45	12:00-1:00	1:15-2:15	2:30-3:30	3:45-4:45	5:00-6:00	6:15-7:15	7:30-8:30	8:45-9:45	10:00-11:00
TUE 4	5:45-6:45	7:00-8:00	8:15-9:15	9:30-10:30	10:45-11:45	12:00-1:00	1:15-2:15		3:45-4:45	5:00-6:00	6:15-7:15	7:30-8:30	8:45-9:45	10:00-11:00
WED 5	5:45-6:45	7:00-8:00	8:15-9:15	9:30-10:30	10:45-11:45	12:00-2:00		2:45-4:00	4:20-5:20	5:30-6:30	6:40-7:40	7:50-8:50	8:45-9:45	10:00-11:00
THU 6	5:45-6:45	7:00-8:00	8:15-9:15	9:30-10:30	10:45-11:45	12:00-1:00	1:15-2:15	2:30-3:30	3:45-4:45	5:00-6:00	6:15-7:15	7:30-8:30	8:45-9:45	10:00-11:00
FRI 7	5:45-6:45	7:00-8:00	8:15-9:15	9:30-10:30	10:45-11:45	12:00-1:00	1:15-2:15		3:45-4:45	5:00-6:00	6:15-7:15	7:30-8:30	8:45-9:45	10:00-11:00
SAT 8	5:45-6:45	7:00-8:00	8:15-9:15	9:30-10:30	10:45-11:45	12:00-1:00	1:15-2:15	2:30-3:30	3:45-4:45	5:00-6:00	6:15-7:15	7:30-8:30	8:45-9:45	10:00-11:00
SUN 9	5:45-6:45	7:00-8:00	8:15-9:15	9:30-10:30	10:45-11:45	12:00-1:00	2:00-4:00		4:10-5:30	5:00-6:00	6:15-7:15	7:30-8:30	8:45-9:45	10:00-11:00
MON 10	5:45-6:45	7:00-8:00	8:15-9:15	9:30-10:30	10:45-11:45	12:00-1:00	1:15-2:15	2:30-3:30	3:45-4:45	5:00-6:00	6:15-7:15	7:30-8:30	8:45-9:45	10:00-11:00
TUE 11	5:45-6:45	7:00-8:00	8:15-9:15	9:30-10:30	10:45-11:45	12:00-1:00	1:15-2:15		3:45-4:45	5:00-6:00	6:15-7:15	7:30-8:30	8:45-9:45	10:00-11:00
WED 12	5:45-6:45	7:00-8:00	8:15-9:15	9:30-10:30	10:45-11:45	12:00-1:00	1:15-2:15	2:30-3:30	3:45-4:45	5:00-6:00	6:15-7:15	7:30-8:30	8:45-9:45	10:00-11:00
THU 13	5:45-6:45	7:00-8:00	8:15-9:15	9:30-10:30	10:45-11:45	12:00-1:00	1:15-2:15		3:45-4:45	5:00-6:00	6:15-7:15	7:30-8:30	8:45-9:45	10:00-11:00
FRI 14	5:45-6:45	7:00-8:00	8:15-9:15	9:30-10:30	10:45-11:45	12:00-1:00	1:15-2:15	2:30-3:30	3:45-4:45	5:00-6:00	6:15-7:15	7:30-8:30	8:45-9:45	10:00-11:00



Tizz E. H. Crowley, Ward One  
Robert Hayes, Ward Two  
Mary Lafontaine, Ward Three  
David Young, Ward Four



Leroy Walker, Ward Five  
Belinda Gerry, At Large  
Joshua Shea, At Large

Jonathan LaBonte, Mayor

## **IN CITY COUNCIL**

### **ORDER 12-01312013**

**ORDERED**, that the City Council hereby approves the design and updated budget for the double sheet Ice Arena.