



# Barker Mill Trail Extension

## Recreational Trails Grant

RECREATIONAL TRAILS GRANT

Presentation to  
Auburn Planning Board

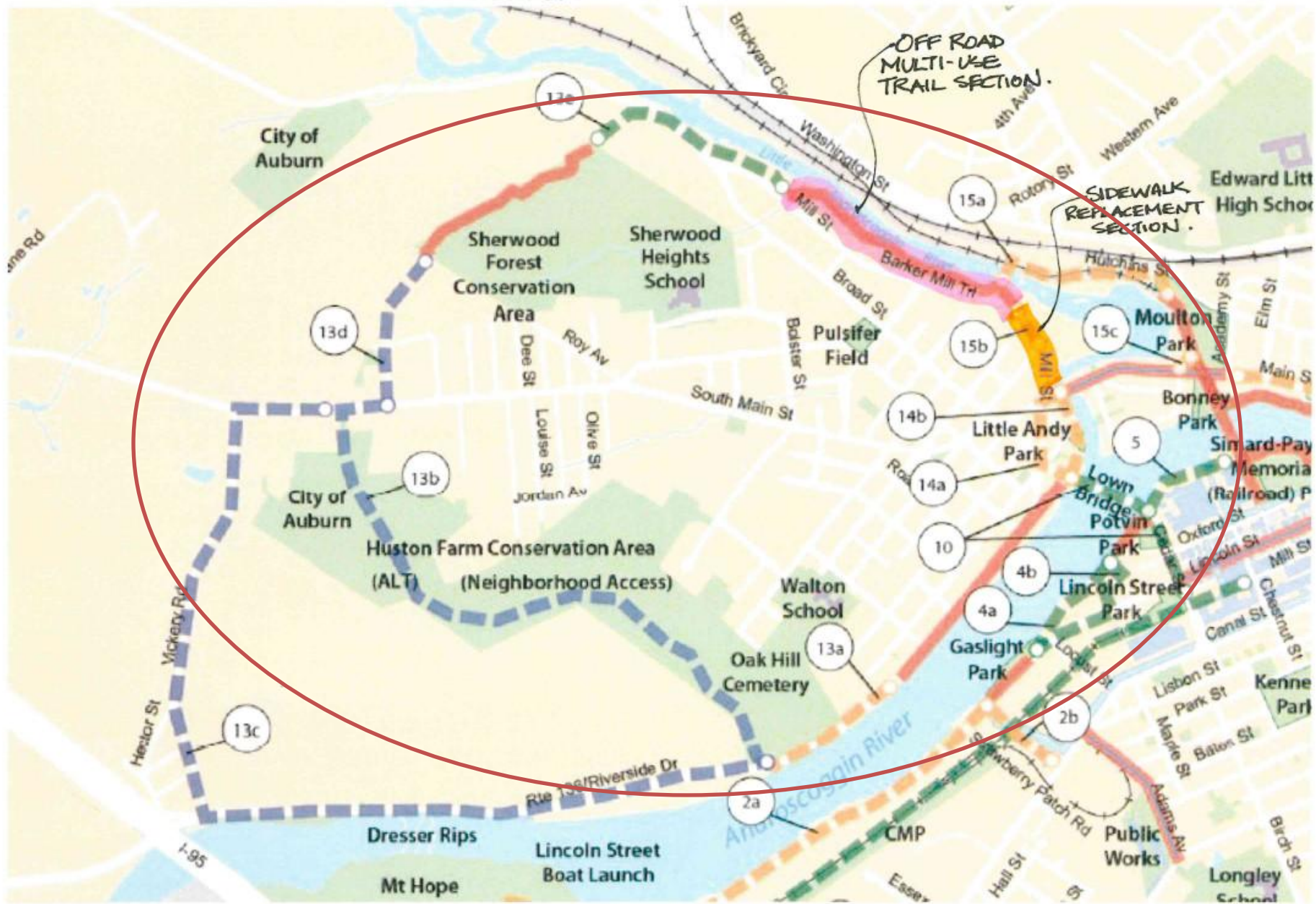
October 14, 2014

Figure 1: Little Andy Downtown Connector Location Map



The New Auburn Little Andy Connector Proposal from 2013.

# BARKER MILL GREENWAY TRAIL PROPOSAL



Proposed "loop" trail system connecting parks, trails, schools and open space.



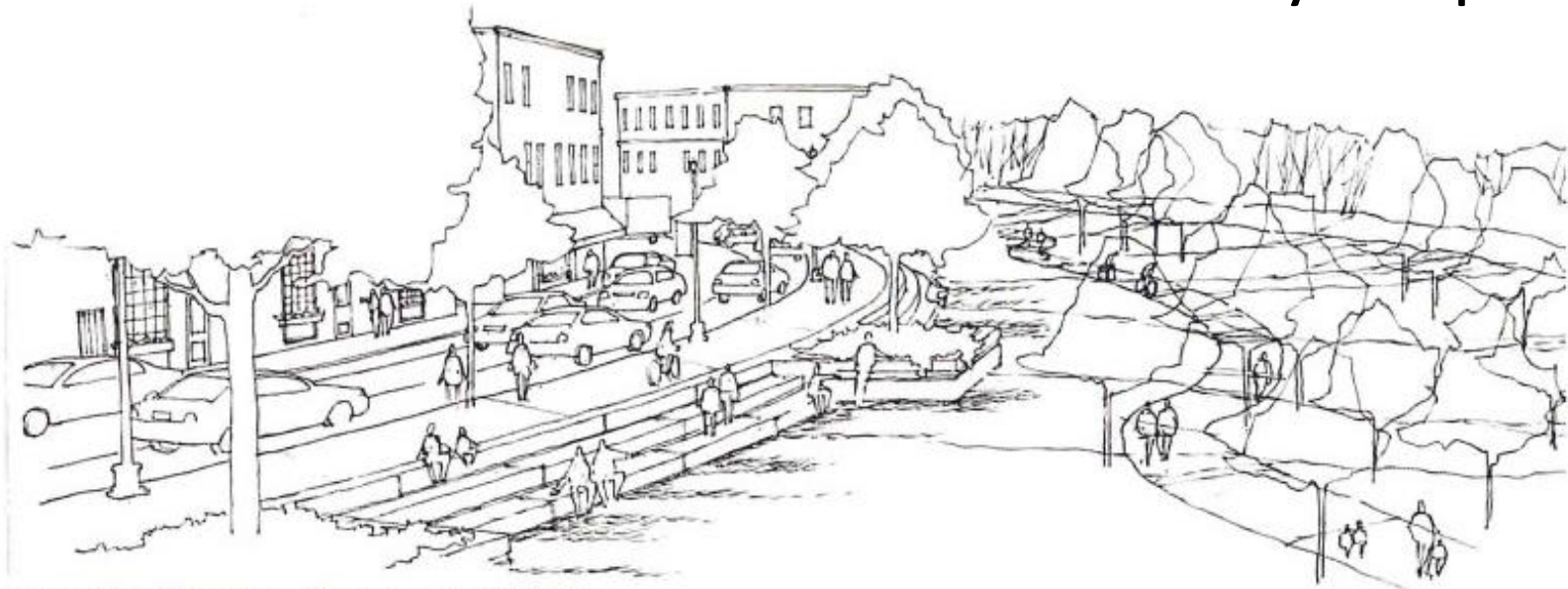
Figure 2: 2014 New Auburn Village Center Master Plan

# New Auburn Village Center Master Plan



**Figure 54: Riverway – Existing Conditions**

## **New Auburn Greenway Concept**



**Figure 55: Riverway – Proposed Conditions**

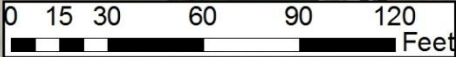


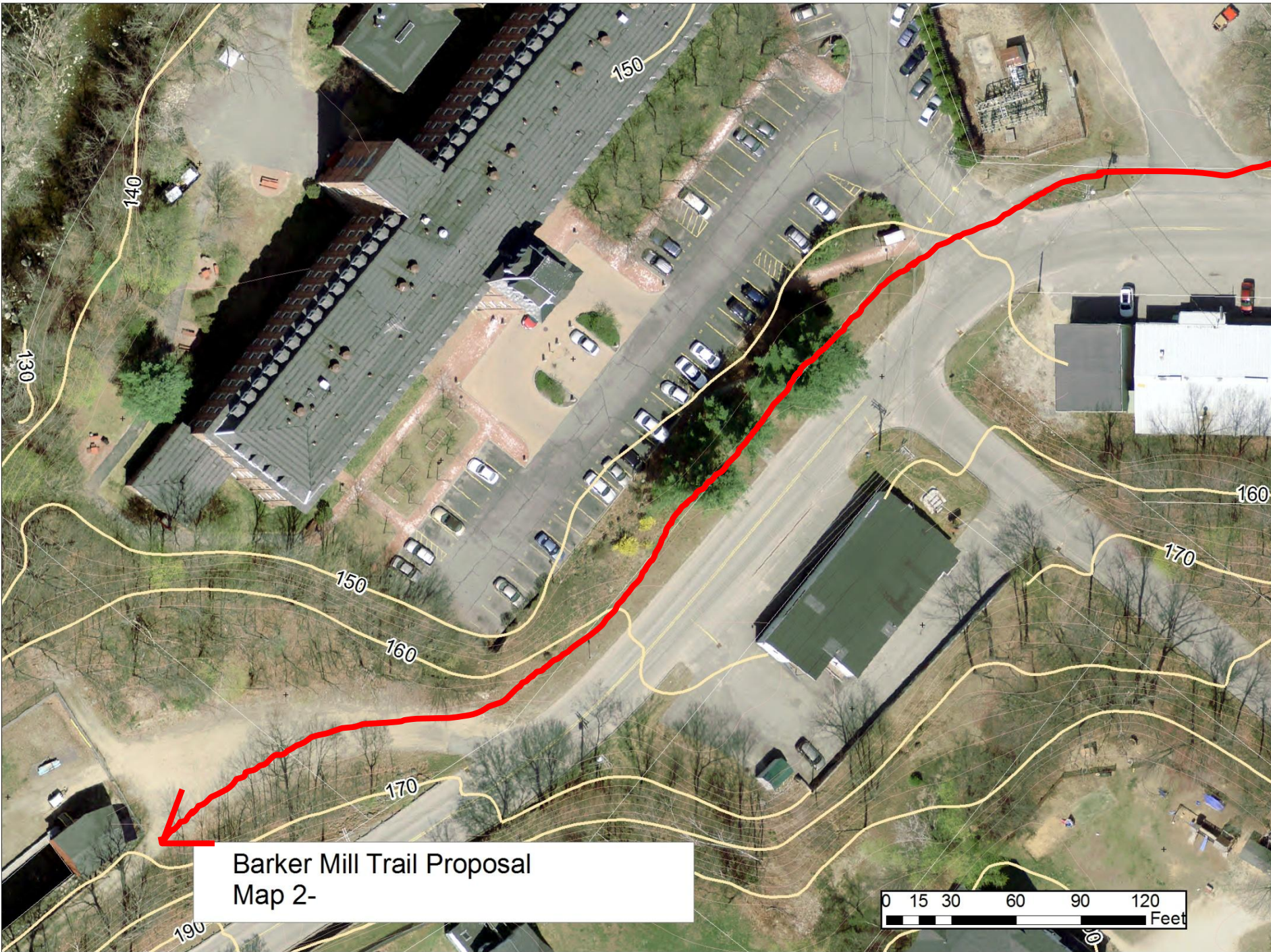
Figure 13: 2014 Master Plan Transportation Phasing

### New Auburn Village Center Plan Phasing

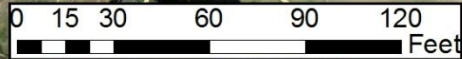


Barker Mill Trail Proposal  
Map 1-





Barker Mill Trail Proposal  
Map 2-







Start of Barker Mill Trail Extension-  
Corner of South Main and Mill Street

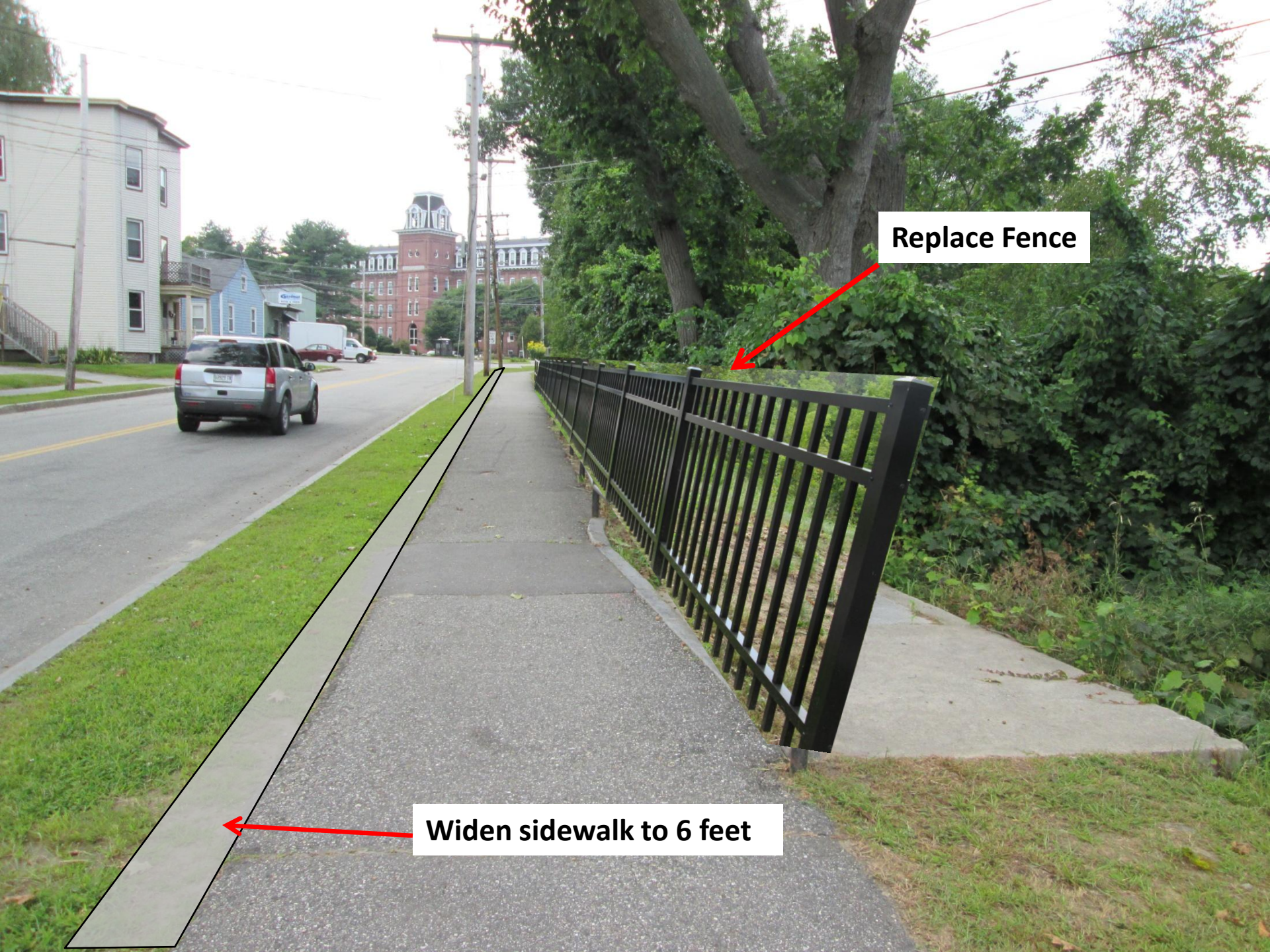
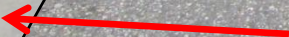


**Widen sidewalk to 6 feet**

**Replace Fence**



**Widen sidewalk to 6 feet**

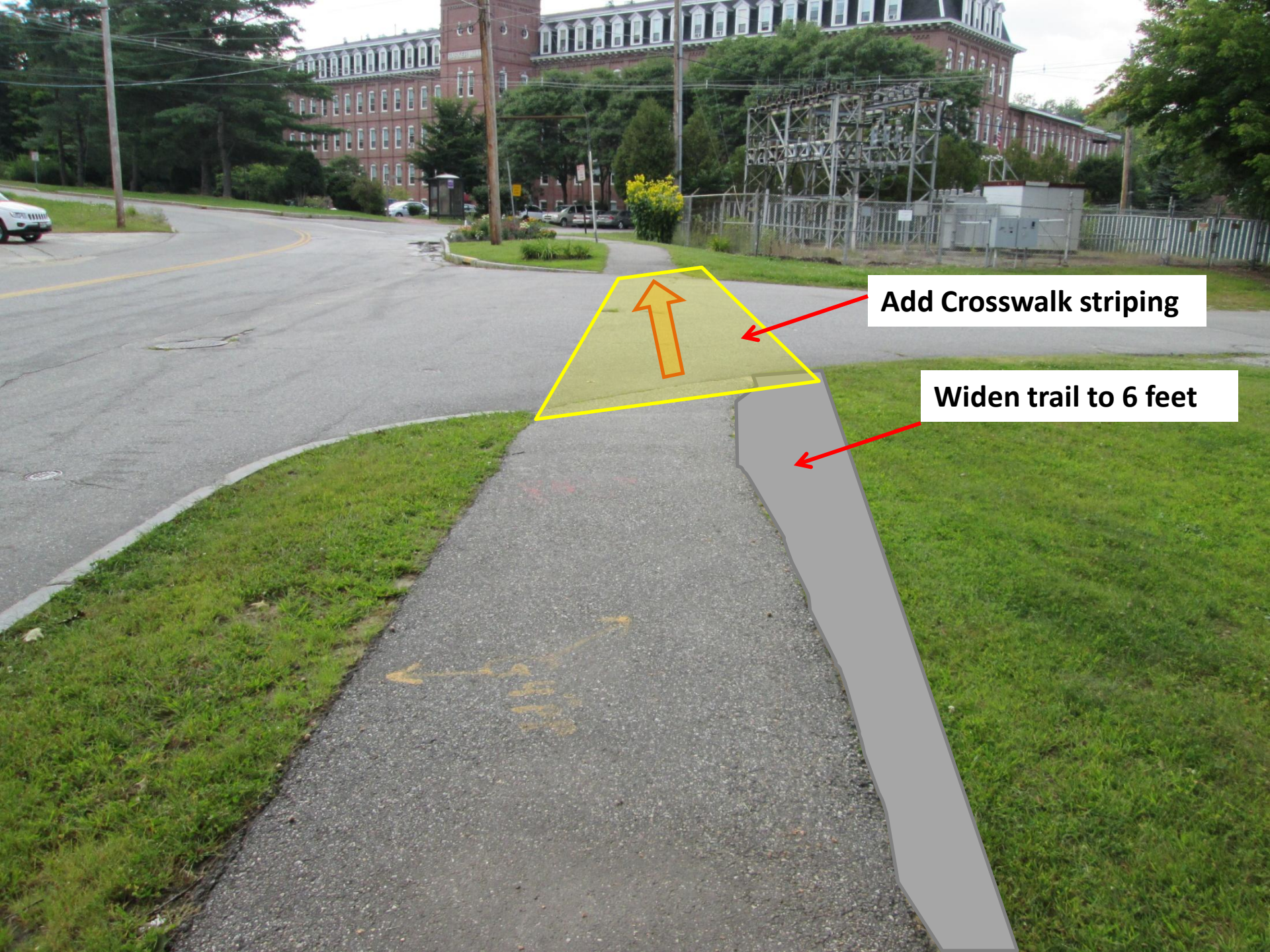




**Sitting area with  
benches to view river.**

**Clear limbs for sitting area  
view of Little Andy.**





**Add Crosswalk striping**

**Widen trail to 6 feet**

**Divert or fix Penstock leak**

**Widen trail to 6 feet**

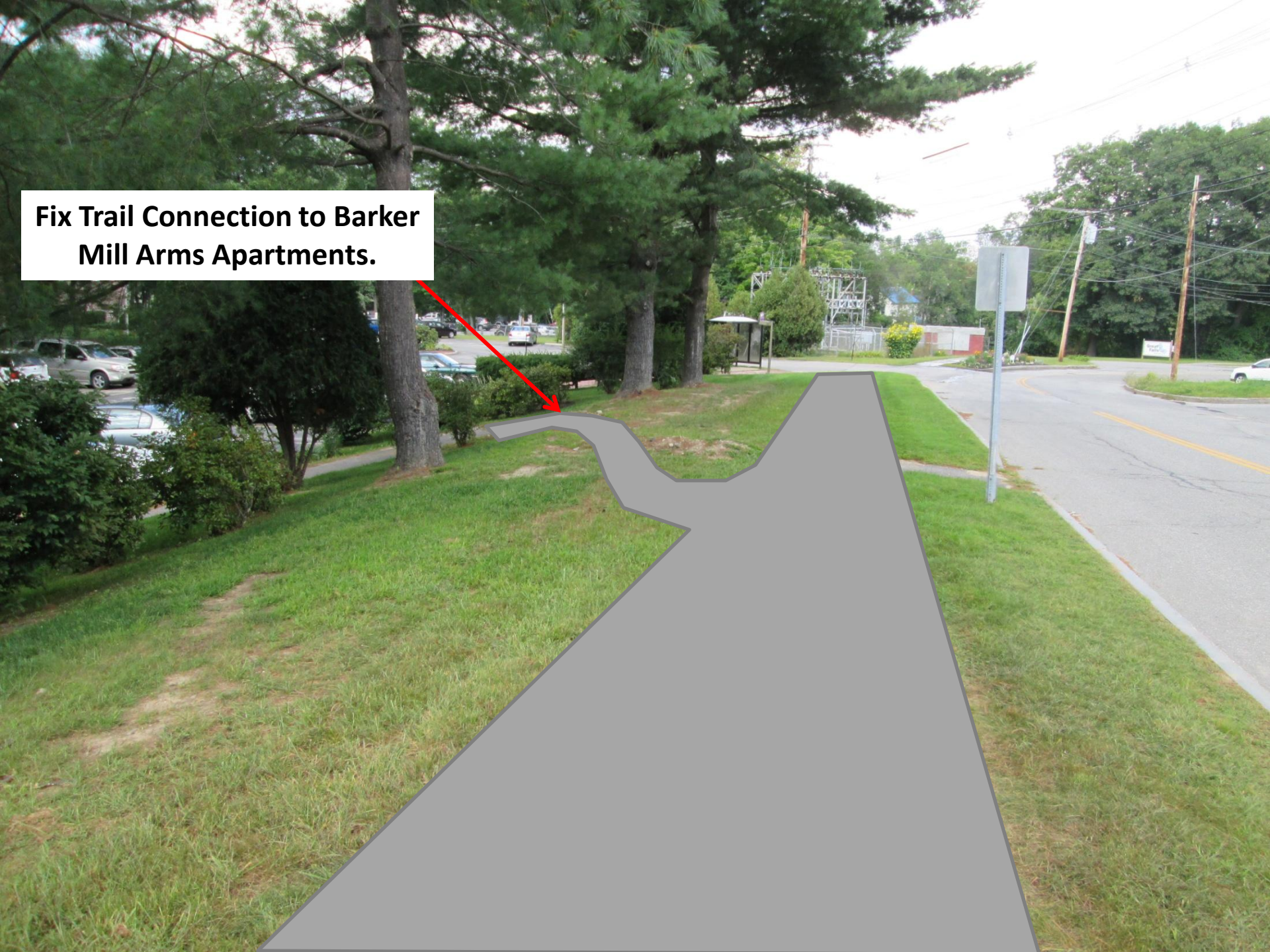


**New trail construction**





**Fix Trail Connection to Barker  
Mill Arms Apartments.**



**NO PARKING  
THIS**

**Parking Area and Beginning  
of Barker Mill Trail**



**New Trail**

A gravel path leads from the foreground towards a red barn and a fenced-in area. A red arrow points from a text box to a specific spot on the path. The path is bordered by dense green trees on the left and a grassy area with a fence on the right.

**Trail extension connects to  
Barker Mill Trail here.**

**Trailhead and Parking Area**

# Grant Summary

**Budget-** Maximum award is \$35,000 from State plus 20% (\$8,750) local match = \$43,750 total maximum award

Preliminary Budget is	\$38,852
with 10% contingency	<u>\$ 3,885</u>
TOTAL PROPOSED	\$42,737

STATE SHARE (80%) -	\$34,189.60
LOCAL SHARE (20%) -	<u>\$ 8,547.40</u>
TOTAL GRANT-	\$42,737.00

**Timeframe-** Grant is due November 14, 2014  
Anticipated construction time- 1 month (Spring 2015)  
Work must be completed in 2 years.